



ManageEngine
AD360

Setting up a reverse proxy for AD360 using Internet Information Services

www.manageengine.com/active-directory-360/

Table of contents

- Document summary _____ 1
- How does AD360 work with reverse proxy servers? _____ 1
- Prerequisites _____ 1
- Configuring IIS as a reverse proxy for AD360 _____ 2
- How to install an SSL/TLS certificate _____ 5
- Configuring an external reverse proxy for AD360 _____ 9

Document summary

This guide will walk you through the process of securely deploying AD360 to remote users using Microsoft Internet Information Services (IIS) as a reverse proxy server. This setup will improve security by acting as a buffer between the internet and your server. It will also boost performance through efficient caching to improve loading speeds.

How does AD360 work with reverse proxy servers?

The requests from clients (users) are received by the reverse proxy server (IIS) in the DMZ. The reverse proxy server forwards those requests to the AD360 server in the LAN. If needed, the AD360 server can be hosted in the DMZ instead. Either way, external machines never connect directly to the AD360 server. Your firewall will only permit the proxy server to access the AD360 server and only through the required port.

Prerequisites

Enter the reverse proxy server's IP address in the `server.xml` file using these steps:

1. Access the **`conf`** folder in the AD360 installation directory (by default, `C:\Program Files\ManageEngine\AD360\conf`).
2. Open the **`server.xml`** file in the `conf` folder.
3. Add the following code inside the `<Host>` tag:

```
<Host>  
  <Valve className="org.apache.catalina.valves.RemoteIpValve"  
    remotepHeader="x-forwarded-for" proxiesHeader="x-forwarded-by"  
    requestAttributesEnabled="true" internalProxies="<IP_address >"/>  
</Host>
```

```

<!-- Define properties for each web application. This is only needed
if you want to set non-default properties, or have web application
document roots in places other than the virtual host's appBase
directory. -->

<!-- Tomcat Root Context -->
<!-- The cachingAllowed attribute is set to false - Reason: While loading a dynamic image in html it requires a delay to load the latest image. To avoid this and to load the image instantly we are setting this-->
<Context path="" docBase="/ads" debug="0">
  <manager pathname=""/>
</Context>

<Context appBase="webapps" debug="0" docBase=".." /help/" path="/help" reloadable="true"/>

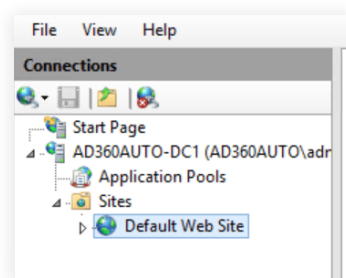
<!-- Valves -->
<Valve className="org.apache.catalina.valves.RemoteIpValve" remoteIpHeader="x-forwarded-for" proxyHeader="x-forwarded-by" requestAttributesEnabled="true" internalProxies="127.0.0.0, 1.192.168.1, 10.0.0.1"/>
</Host>
</Engine>
</Service>
</Server>

```

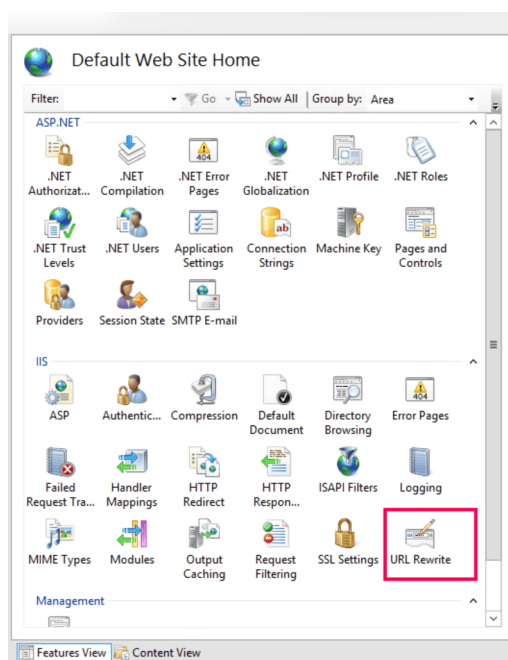
Configuring IIS as a reverse proxy for AD360

You can set up your IIS web server as a reverse proxy server for AD360. Follow the steps below to get started.

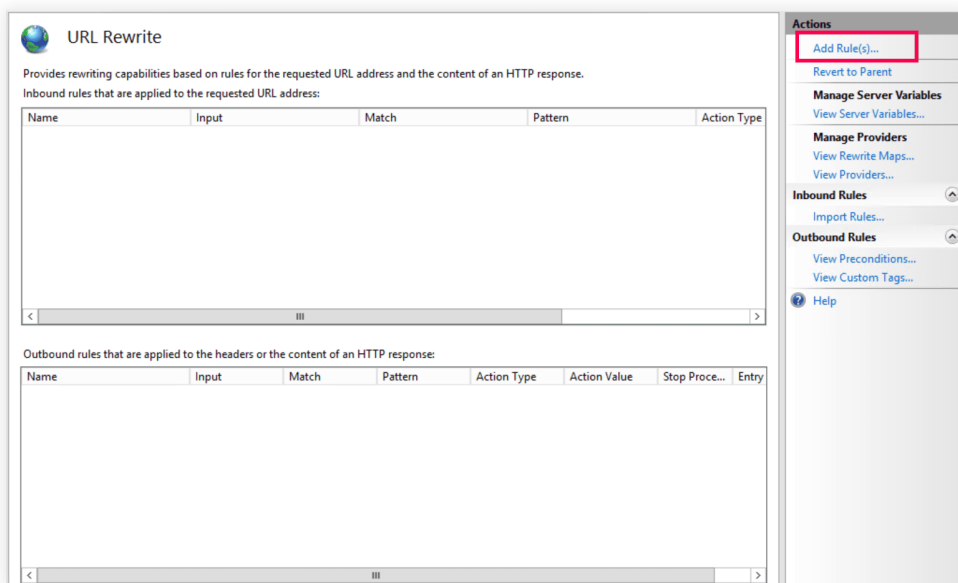
1. Install the URL Rewrite extension. You can use the Microsoft Web Platform Installer or [download the extension directly](#).
2. Open **Internet Information Services (IIS) Manager**.
3. Select **Default Web Site** from the tree view on the left pane.



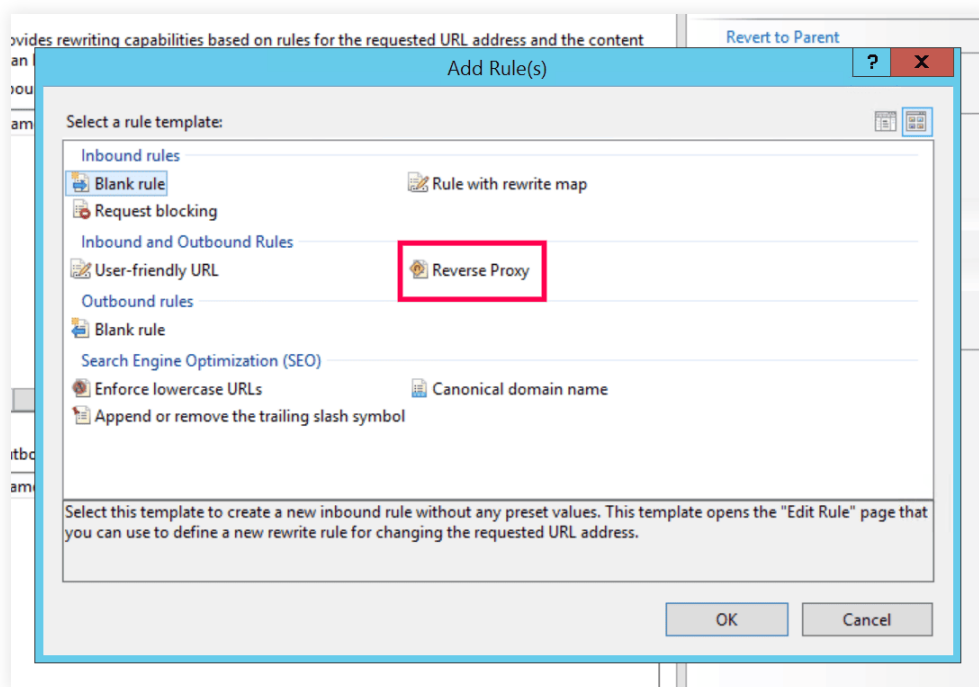
4. Double-click **URL Rewrite**.



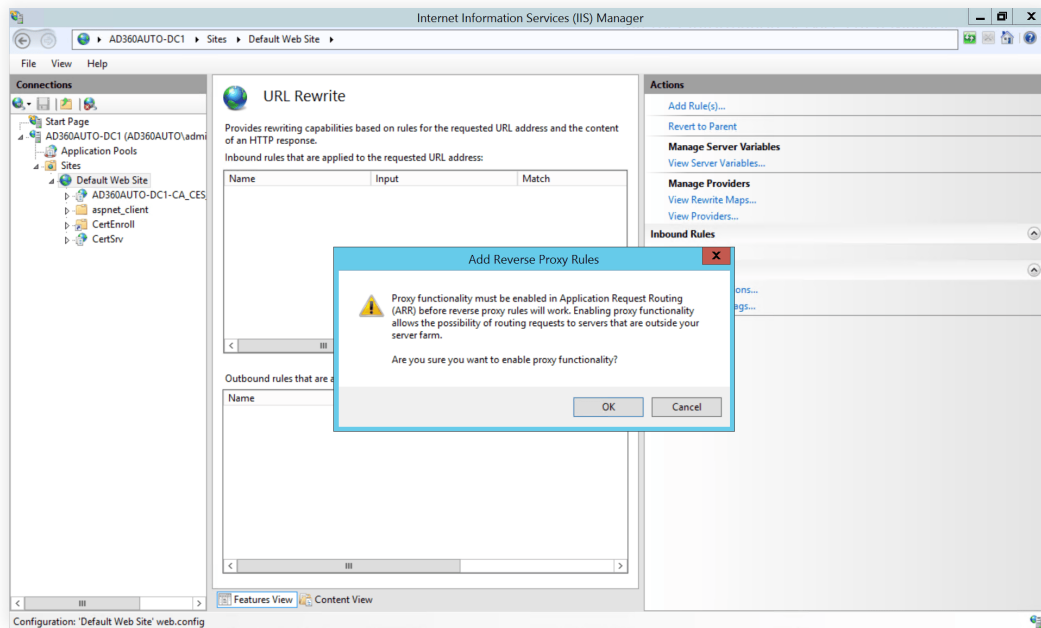
5. On the right pane, click **Add Rule(s)** in the *Actions* menu.



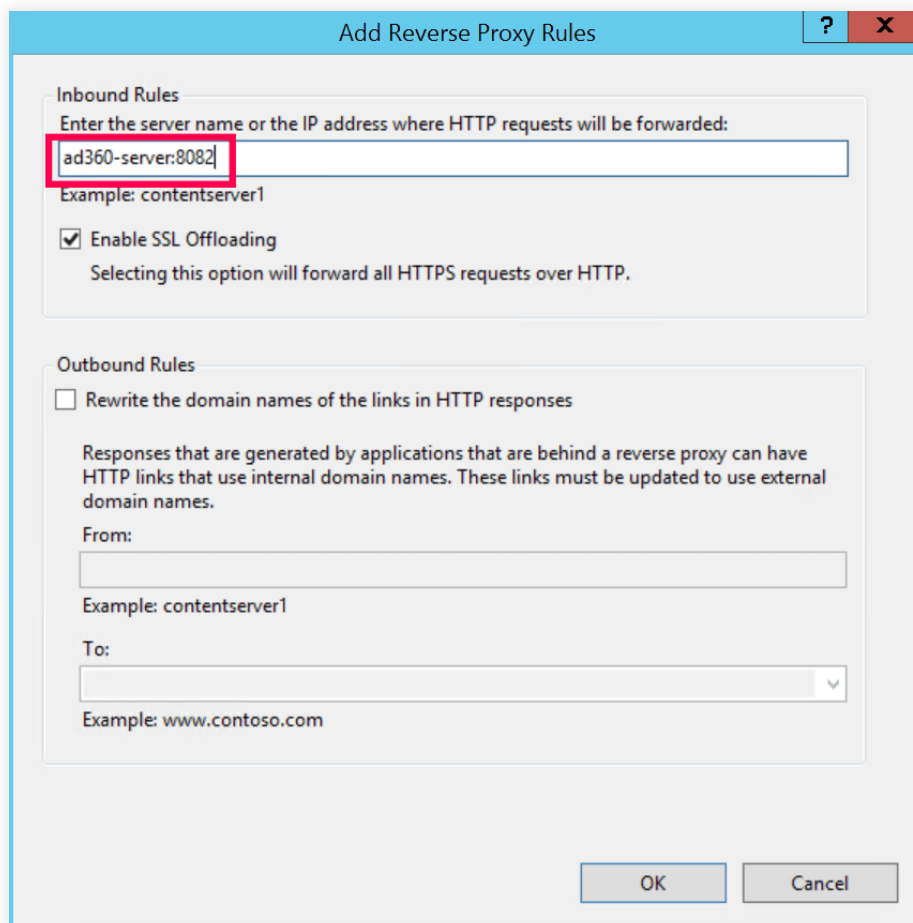
6. In the *Add Rule(s)* window that opens, under *Inbound and Outbound Rules*, select **Reverse Proxy**.



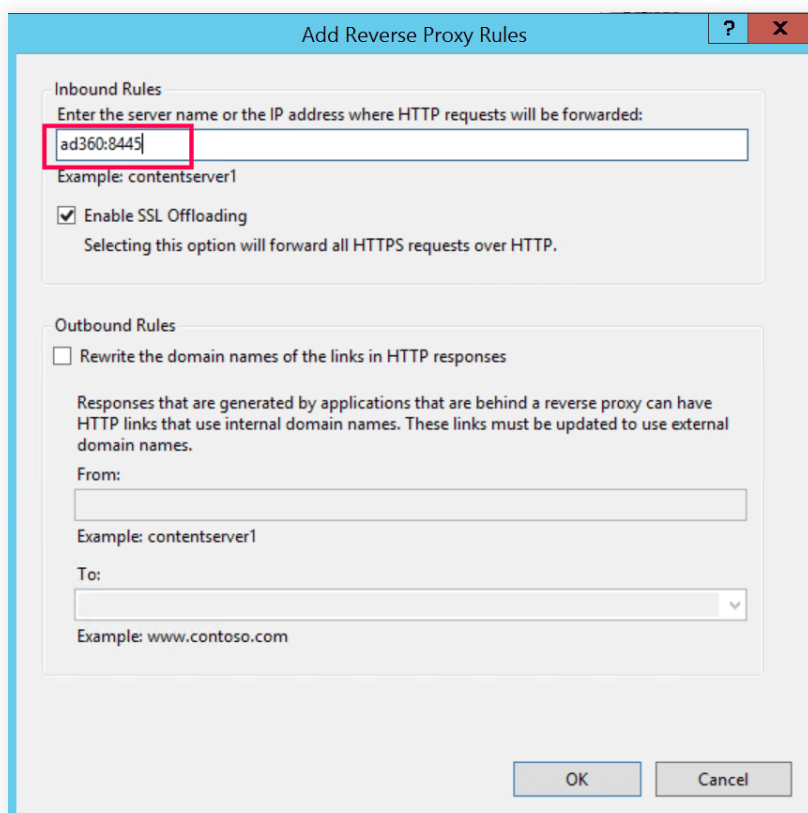
7. The IIS server may ask the user to install the Application Request Routing extension. This can be installed [here](#). After the installation, the following warning may also be displayed; click **OK** to proceed.



8. In the *Add Reverse Proxy Rules* window that opens, in the *Inbound Rules* section, enter the AD360 server's URL (hostname or IP address) and port number. Here are two format samples:



A: When HTTP is used



B: When HTTPS is used

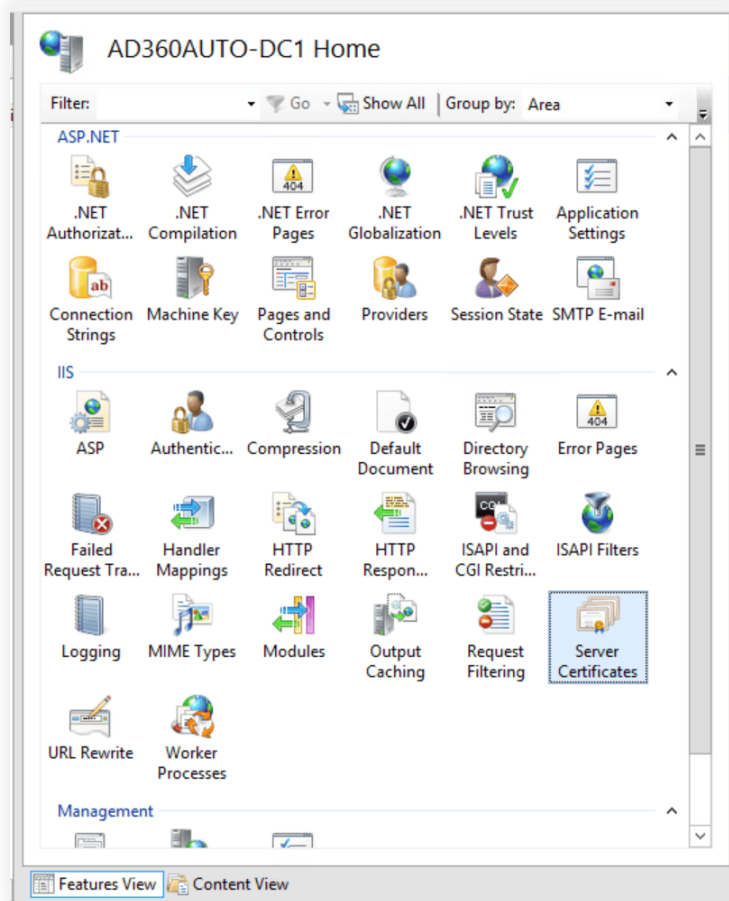
9. Check the **Enable SSL Offloading** box if the AD360 server is using HTTP and the IIS server is using HTTPS. If the AD360 server is using HTTPS, this box can be left unchecked.

10. Click **OK**.

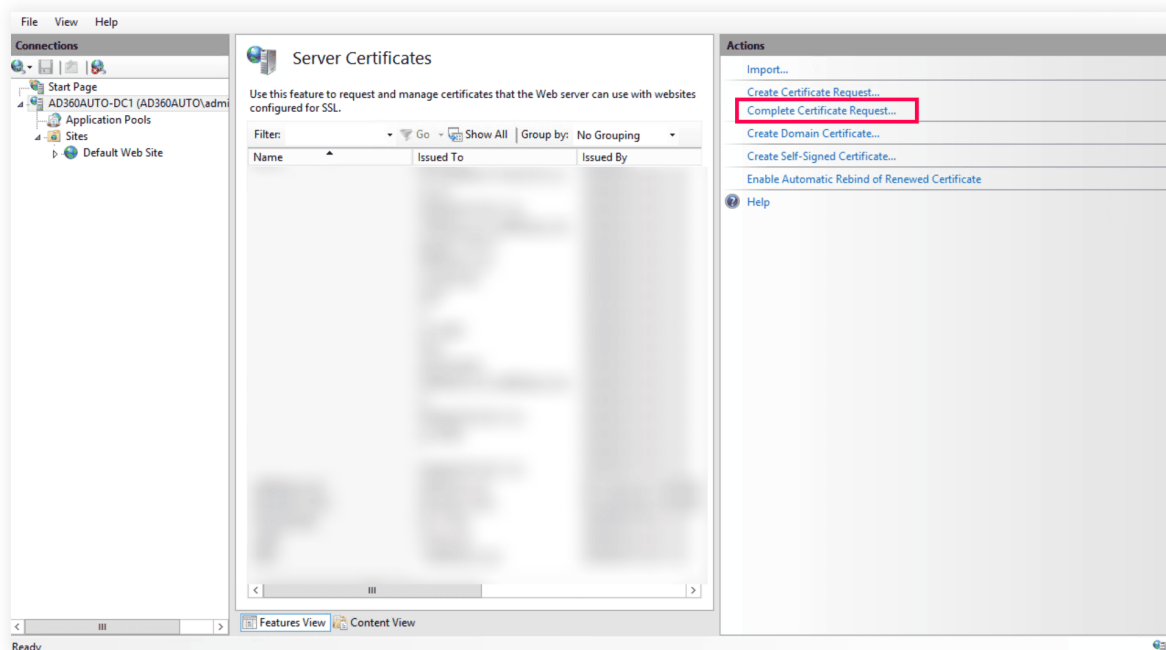
The setup for using an IIS server as a reverse proxy for the AD360 server is now complete.

How to install an SSL/TLS certificate

1. Go to **Start > Control Panel > Administrative Tools > Internet Information Services (IIS) Manager**.
2. In the *Connections* menu on the left, select the server name (host) where you want to install the certificate.
3. On the middle pane, click **Server Certificates** in the *IIS* section.



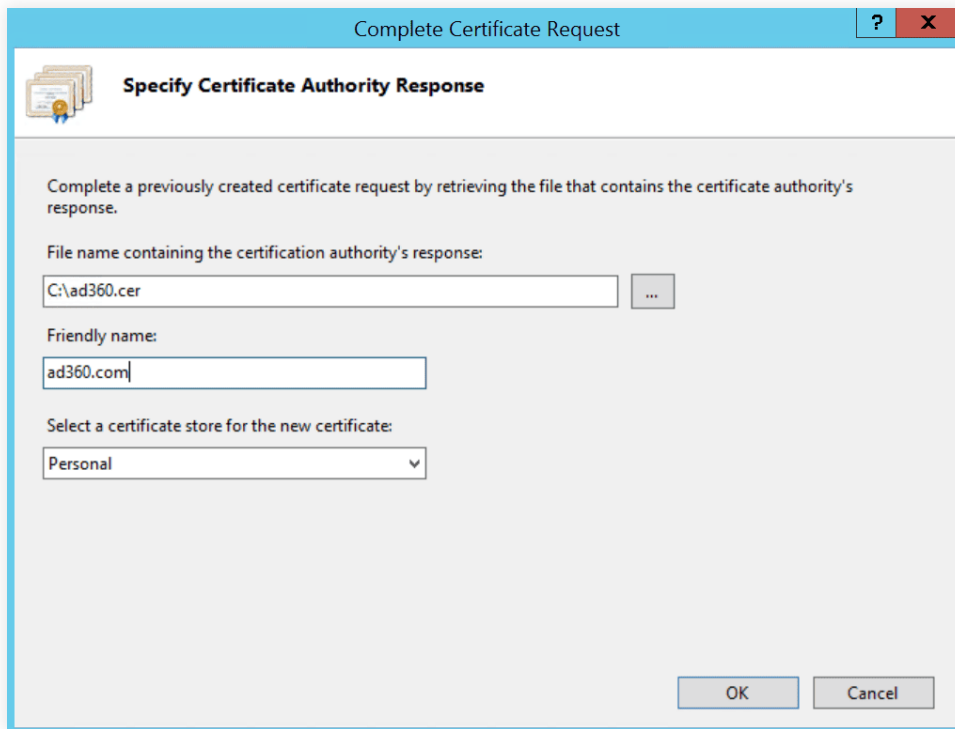
4. In the *Actions* menu, click **Complete Certificate Request**.



5. In the *Complete Certificate Request* wizard, click ... to browse and select your server certificate file.

6. Enter a name that will serve as an internal reference name to distinguish the file later.

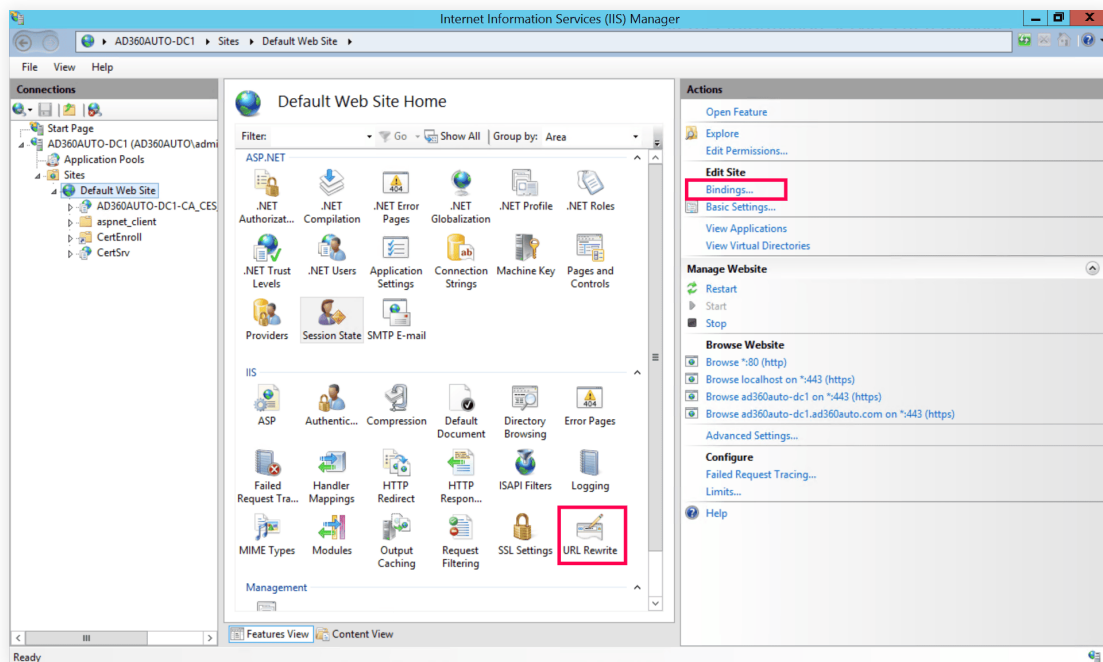
Using the certificate authority's name and the expiration date can make it easier to find.



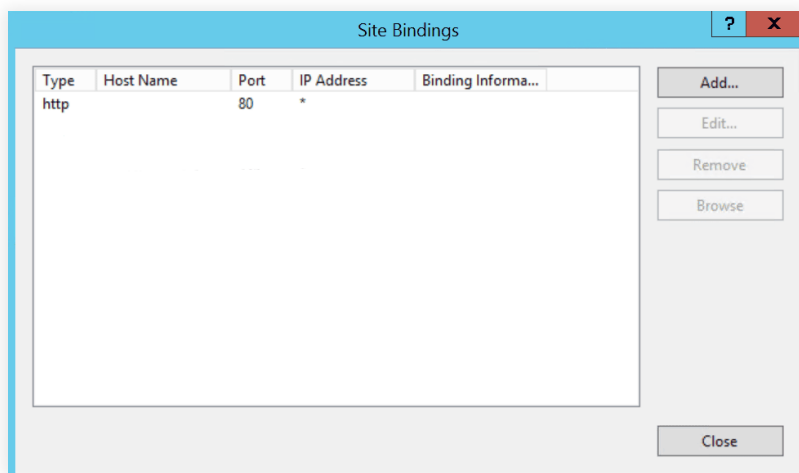
7. Click **OK**. The newly installed certificate should appear in the refreshed *Server Certificates* list.

Steps to bind an SSL certificate to the website

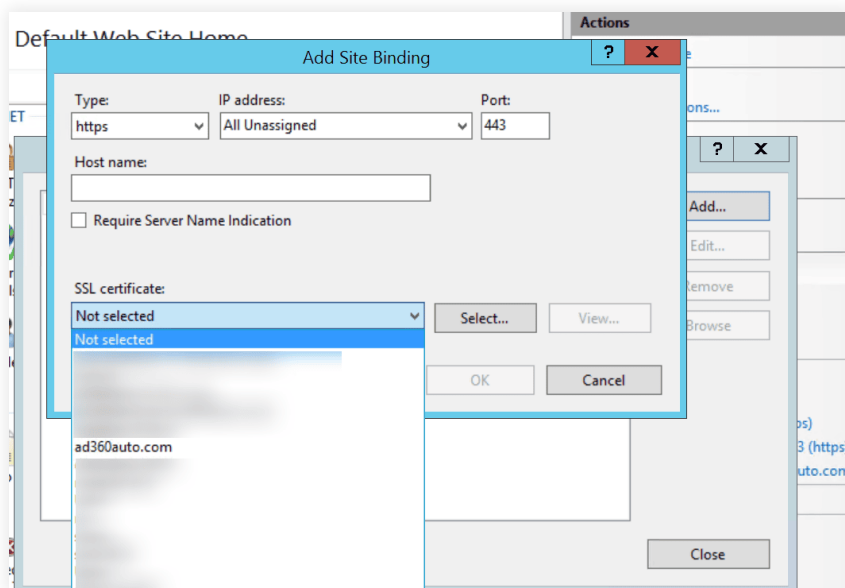
1. In **Internet Information Services (IIS) Manager**, expand the **Sites** folder in the *Connections* menu.
2. Select **Default Web Site**.
3. Select **Bindings** in the *Actions* menu.



4. In the *Site Bindings* window that appears, select the **https** binding and click **Edit**. If there is no **https** binding link in the window, click **Add** and change the type from **http** to **https**.



5. From the *SSL certificate* drop-down in the *Add Site Binding* window, select a certificate that you want to bind to the website. If there are multiple certificates in this drop-down, click the **View** button to see information about each certificate and choose the one that you'd like to add.



6. Click **OK**.

Configuring an external reverse proxy for AD360

IIS is configured as a reverse proxy for AD360. Follow the steps below to complete the setup.

1. Open `<Install_Dir>\conf\product_detail.conf`.
2. Add the following entries:
 - a. `PROXY_HOST=<hostname of the proxy used to access the product>`
 - b. `PROXY_PORT=<proxy port used to access the product>`
 - c. `PROXY_PROTOCOL=<proxy protocol>`
 - d. `TRUSTED_IP=<IP address of the proxy server>`

Sample entries:

- a. `PROXY_HOST=ad360.com`
- b. `PROXY_PORT=443`
- c. `PROXY_PROTOCOL=https`
- d. `TRUSTED_IP=192.168.212.21`

3. The following query needs to be executed in all the components integrated with AD360:
 - a. Select * from ADSProducts;
 - i. Note down the `product_id` value for the current product (for example, if the product is ADManager Plus, note down the `product_id` column value for ADManager Plus).
 - b. Insert into ADSFilterParams values (<product_id noted above>, 'CUSTOM_ALLOW_FROM_FRAME_URLS', 'http://ad360.com:443');
 - i. The URL of AD360 should be replaced according to your AD360 access URL.
 - ii. Restart the component.
- c. Now try accessing AD360.

Note:

You may need to stop and restart the machine where IIS is installed for the changes to take effect. In some cases, a mere restart of the IIS services is not sufficient for the changes to get implemented, so a reboot is required.

If you have any questions, please contact ad360-support@manageengine.com.

One of our product experts will be happy to help you.

ManageEngine AD360

Our Products

Log360 | ADManager Plus | ADAudit Plus | ADSelfService Plus
Exchange Reporter Plus | RecoveryManager Plus

ManageEngine AD360

ManageEngine AD360 is a unified identity and access management (IAM) solution that helps manage identities, secure access, and ensure compliance. It comes with powerful capabilities like automated identity life cycle management, access certification, risk assessment, secure single sign-on, adaptive MFA, approval-based workflows, UBA-driven identity threat protection and historical audit reports of AD, Exchange Server and Microsoft 365. AD360's intuitive interface and powerful capabilities make it the ideal solution for your IAM needs, including fostering a Zero Trust environment.

For more information, please visit
www.manageengine.com/active-directory-360/.

\$ Get Quote

↓ Download