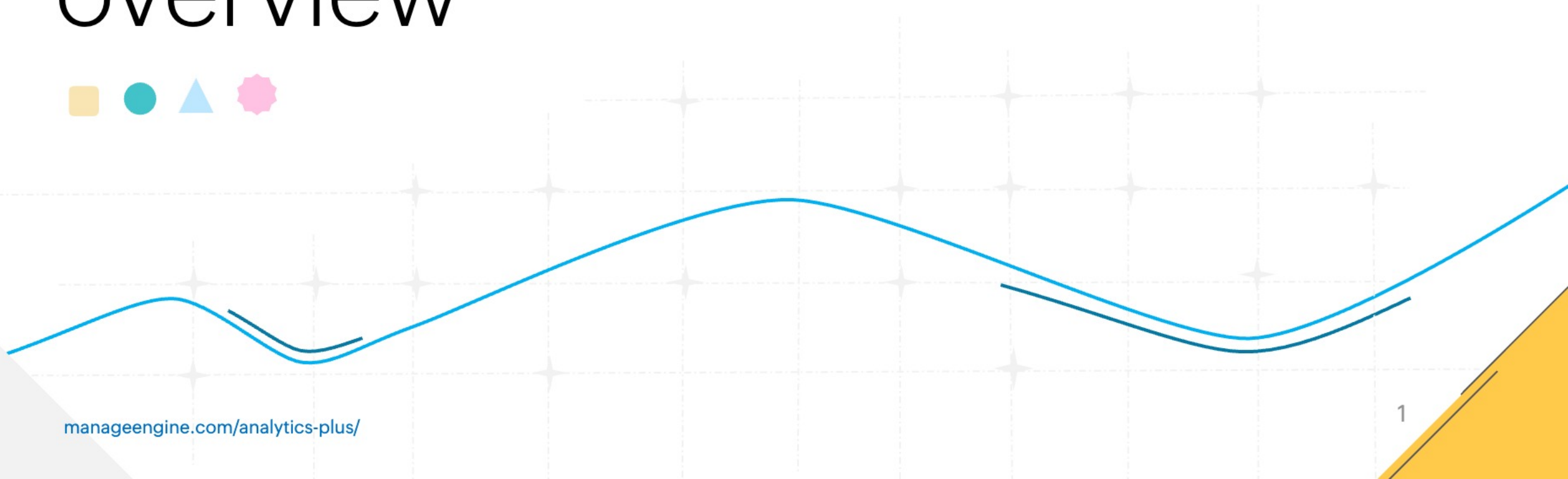
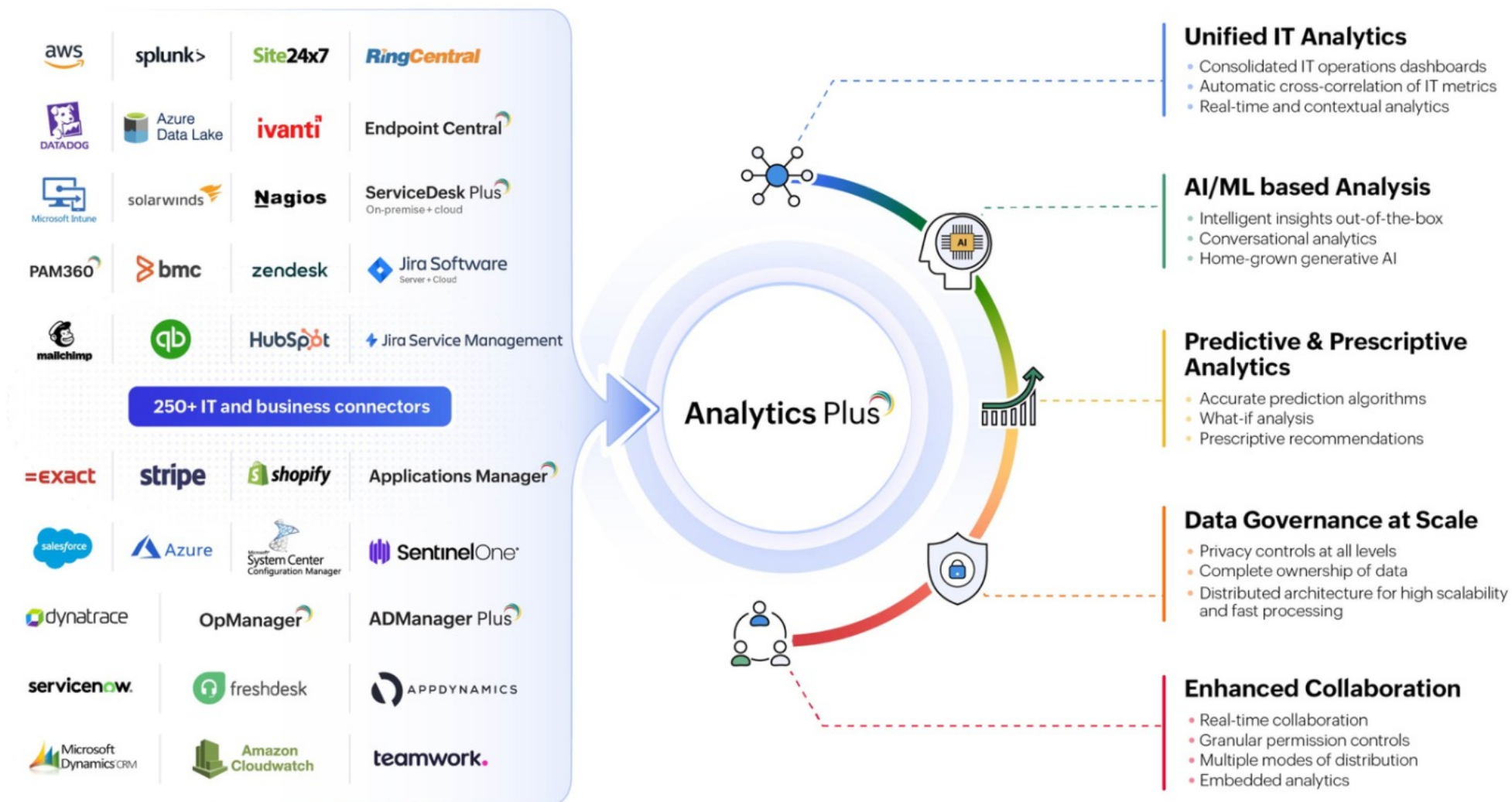


Analytics Plus overview



What is Analytics Plus?



AI-powered unified analytics platform

- **Consolidated view of ITOps**
Custom IT analytics and decision intelligence software. Connects to 250+ IT and business apps, databases and data ware-houses for consolidated operations dashboards
- **Agentic AI**
Autonomously import IT data, perform complex analyses, and make real-time IT intelligence an integral part of workflow orchestrations using MCP
- **AI and ML-driven analytics**
Build tailored IT analyses, expedite root cause analysis and create insightful dashboards—without any manual effort
- **Powerful cross-correlations**
Understand how infrastructure performance affects end user productivity, customer satisfaction and overall digital experience of employees

Features and capabilities



Agentic AI



- **Orchestrate agentic AI workflows**

Transform real-time IT metrics into intelligent, actionable triggers. Automatically initiate workflows such as scaling infrastructure based on dynamic thresholds via MCP

- **Contextual intelligence across IT**

Powered by Zoho LLM, our intelligent IT analyst provides actionable insights and recommendations. Seamlessly adapting to its environment, it delivers AI-driven decision making and intelligent insights across the IT stack

- **Flexible LLM integration**

Integrate the desired LLM for automated analysis, real-time insight interpretation and intelligent workflow automation, making Analytics Plus the central engine of your agentic AI ecosystem

GenAI-driven Analytics



- **AI assistant**

Eliminate data complexity. Build complex reports and dashboards by simply asking questions in plain English. Turn AI-powered conversations into action without switching tabs

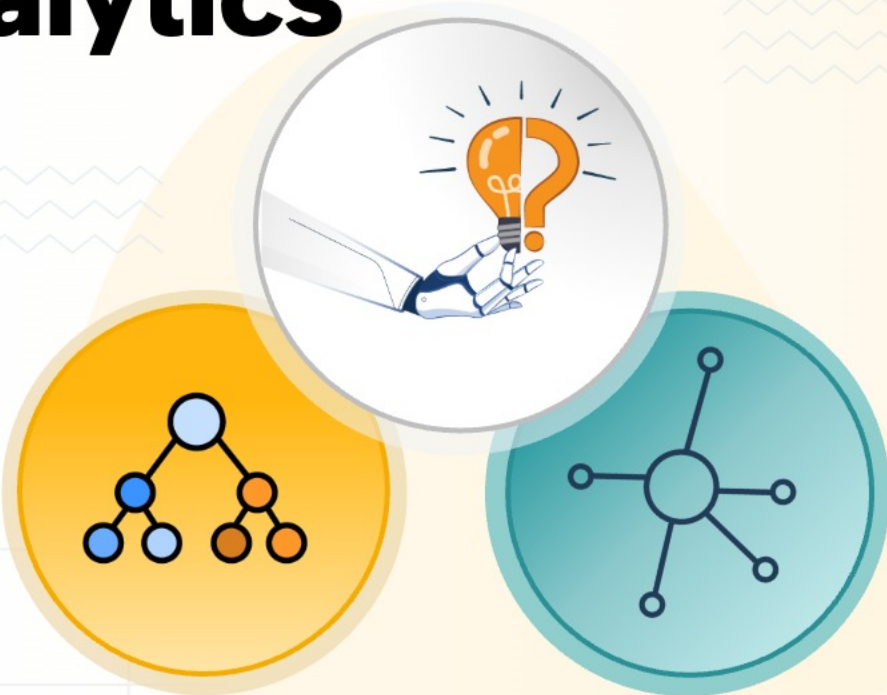
- **GenAI-powered analytics**

Interpret complex analyses with GenAI-driven visual and narrative insights

- **Expedited root cause analysis**

Identify the top factors contributing to a specific trend or inefficiency in seconds

AI and ML-driven Analytics



- **Powerful decision intelligence**
Get practical remedial strategies for operational bottlenecks, even those that often go unnoticed
- **No-code ML builder**
Run complex computations, such as outage prediction and escalation probability, by getting custom ML models to learn how your IT operates
- **Cluster IT events**
Segment IT resources based on specific metrics to fast-track remediation efforts

Advanced Analytics



- **Anomaly-based alerts**

Catch tell-tale signs of underlying issues before they escalate into major disruptions.

- **Data snapshots**

Maintain a time capture of application data to reach back in time and trace progress

- **Smart data blending**

Related data points are auto-identified for correlation

- **Centralized metric library**

Collection of mathematical, statistical, and logical functions can help build an arsenal of calculated metrics and KPIs.

Forecasting and capacity planning



- **Predict trends precisely**

Incorporate influencing metrics and events for precise predictions that help future-proof your operations.

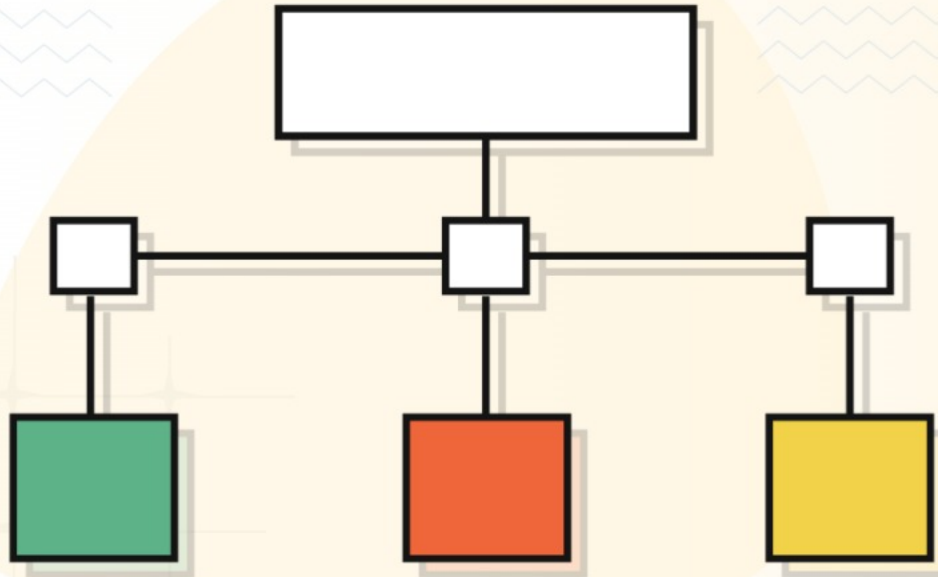
- **Capacity planning**

Study current trends and performance to prevent overspending or underspending on infrastructure

- **Workforce management**

Determine the right team size based on workload and predicted increase in load

Scenario planning



- **Run simulations**

Perform what-if analysis to simulate all possible operational outcomes

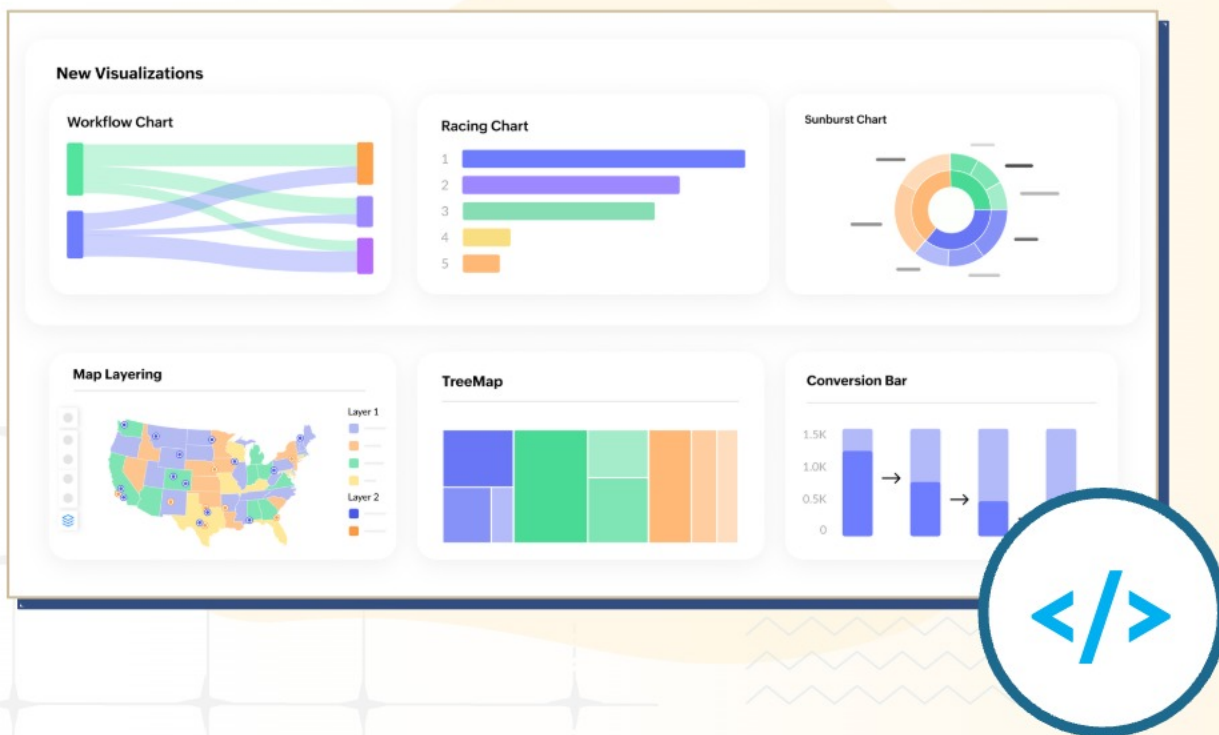
- **Adjust key parameters**

Vary influencing factors in different degrees to arrive on the most favorable results

- **Cause & effect relationships**

Avoid surprises by carefully evaluating the impact of various factors on business outcome

Effortless visual analytics, anywhere



manageengine.com/analytics-plus/

- **45+ visualization types**

Choose from a range of visual formats—including treemaps, layered maps, and workflow charts—to spot trends, bottlenecks, or geographic IT issues at a glance.

- **Drag-and-drop simplicity**

Empower business users with a self-service report builder that requires no coding and supports real-time drill-downs with interactive filters.

- **Customize & embed natively**

Create audience-specific dashboards, rebrand them with your theme, and embed them natively into your internal or third-party applications.

- **Seamless, secure access**

Enable secure, frictionless exploration with SSO (SAML/API-based), ensuring users can investigate live reports directly from their primary tools.

Built for scale and speed



- **Big data analysis**

Process and visualize millions of data rows instantly using a proprietary columnar C-Store database optimized for fast read operations.

- **Automated scaling**

Seamlessly handle growing workloads with a multi-server architecture, automated scaling, distributed processing, and intelligent caching based on usage patterns.

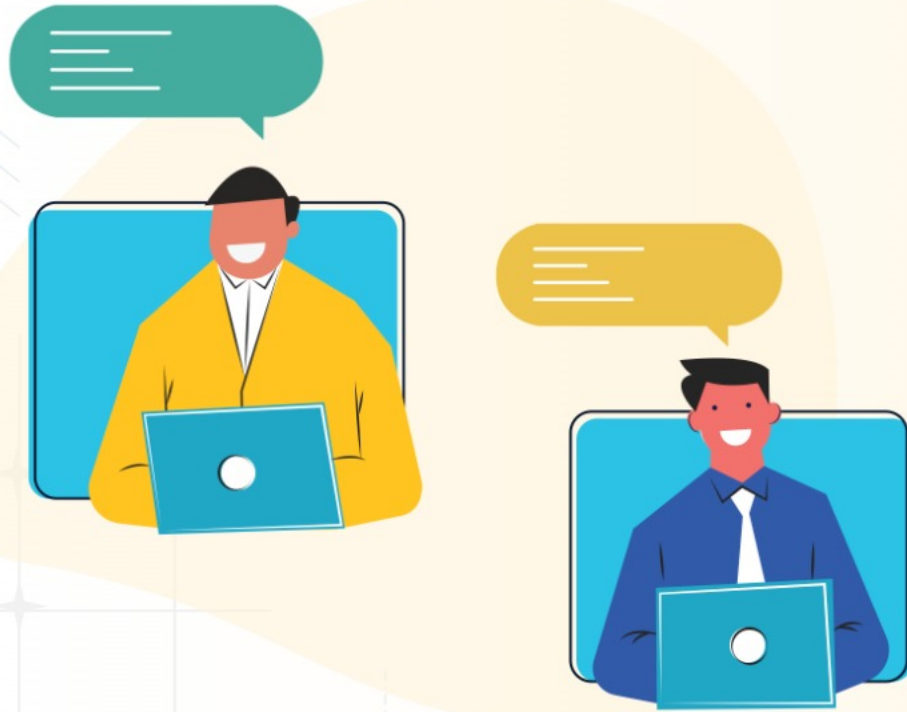
- **High availability**

Achieve 100% uptime with active-passive failover support and horizontally scalable self-hosted deployments.

- **Self-optimizing performance**

Ensure a smooth, lag-free user experience with dynamic resource scaling and intelligent pre-loading of frequently accessed data.

Team collaboration



- **Role-based access control**
Fine-grained permissions help keep a close grip on who has access to what information
- **Report commenting**
Allow users to exchange ideas or discuss trends in real-time using on-report comments
- **Schedule reports**
Send reports directly to user's email on a periodic basis
- **Publish dashboards**
Various publishing options allow for reports to be shared either publicly, privately or to specified groups

Flexible deployment and licensing



• Deploy anywhere

Choose a deployment mode that suits your needs—SaaS or self-hosted on Windows, Linux, Docker, or any public/private cloud platform.

• Flexible licensing components that broadly include:

- **No. of Users:** These are personnel who can import data, create and share views
- **No. of Viewers:** These are read-only personnel who can only view shared views
- **Concurrent guests:** No. of personnel who can view published views simultaneously
- **Rows of data (cloud only):** Volume of data that is imported into Analytics Plus for analysis

Dashboards that drive powerful IT outcomes



The CIO dashboard

Empower complete visibility into the entire IT landscape



360-degree SRE dashboard

Elevate ITOps reliability with AI-driven SRE tracking



Digital employee experience dashboard

Deliver exceptional employee experiences with analytics-powered IT management





Thank you