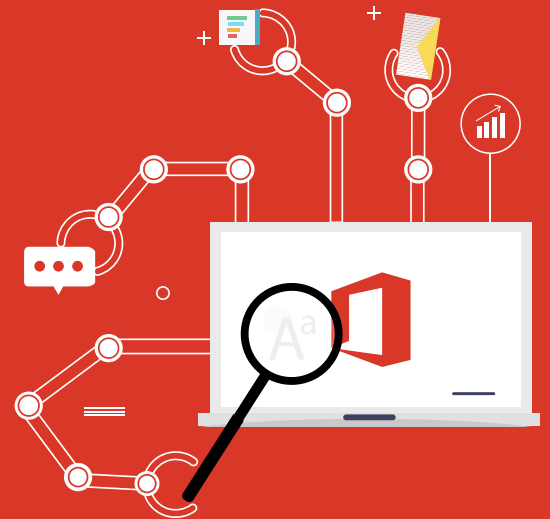


A holistic Microsoft 365 administration solution

- Bulk manage users, groups, mailboxes, sites, Teams, licenses, and more. Stay informed with over 700 preconfigured, comprehensive reports.
- Breeze through IT regulatory audits with compliance reports.
- Audit events to prevent data leaks and security breaches.
- Take instant action on critical events with real-time alerts.
- Monitor the health of features and endpoints, 24x7.
- Automate routine tasks with custom automation policies.
- Identify phishing attacks with advanced content search. Create custom help desk roles to delegate tasks.

ManageEngine
M365 Manager Plus



The challenge at hand

IT admins need a solution that will help them optimize their time and deliver maximum output. Working with the native Microsoft 365 portals can be cumbersome and time-consuming. With different admin portals for each service, IT admins spend a substantial amount of time juggling between these portals. Bulk management requires scripting in PowerShell which can be complex and error-prone.

These challenges are only the tip of the iceberg. If you're on the lookout to ease your admins' workloads and manage Microsoft 365 effectively, we have just the solution for you!

“

Microsoft 365 monitoring, management, and auditing made easy

With this product we can maintain control, generate reports, get alerts, and carry out real-time monitoring of Microsoft 365. We can also monitor the number of licenses used and how many licenses are being wasted on dormant accounts, which can be deleted so that new users can be created and licenses utilized properly.

”

Network engineer
(source: Gartner peer insights)



Introducing M365 Manager Plus

M365 Manager Plus is an exhaustive Microsoft 365 administration solution that helps execute Microsoft 365 tasks effectively. Effortlessly perform bulk management of users, groups, mailboxes, sites, teams, licenses, and more by importing a simple CSV file. Automate these routine tasks with custom automation policies to ease your workload.

Generate detailed reports with in-built filters to drill down data and secure your organization with granular audit logs, real-time alerts for critical events, and advanced content search to prevent security attacks. Stay on top of service outages with around-the-clock monitoring of Microsoft 365 services. Read on to learn more about M365 Manager Plus' features!



Microsoft 365 management

- Manage users, groups, contacts, mailboxes, public folders, mobile devices, sites, Teams, channels, team members, and more from a single console.
- Create and modify Microsoft 365 objects in bulk by simply importing a CSV file.
- Standardize and predefine user, group, contact, mailbox, and license settings with custom object creation templates.
- Notify users of password expiration to prevent account lockouts, and reset passwords in bulk.
- Ensure secure sign-ons by configuring multi-factor authentication for users in bulk.



Microsoft 365 reporting

- Get detailed information on all facets of Microsoft 365 services with over 700 preconfigured reports.
- Use built-in filters to customize reports based on period of generation, attributes, users, and more.
- Schedule reports to be generated periodically, and have them emailed to you.
- Export the reports to multiple formats including PDF, XLSX, HTML, and CSV.
- Embed report summaries in the form of graphs and charts as widgets in the dashboard for quick understanding.

Supported Microsoft 365 services

- Exchange Online Azure
- Active Directory
- SharePoint Online
- OneDrive for Business
- SharePoint Online
- Yammer
- Microsoft Teams
- Microsoft Stream
- Microsoft Sway
- Power BI

Hardware (Recommended)

- Processor: P4 - 3.0GHz or better
- RAM: 16GB
- Disk Space: 500GB (SSD preferred)

Supported platforms

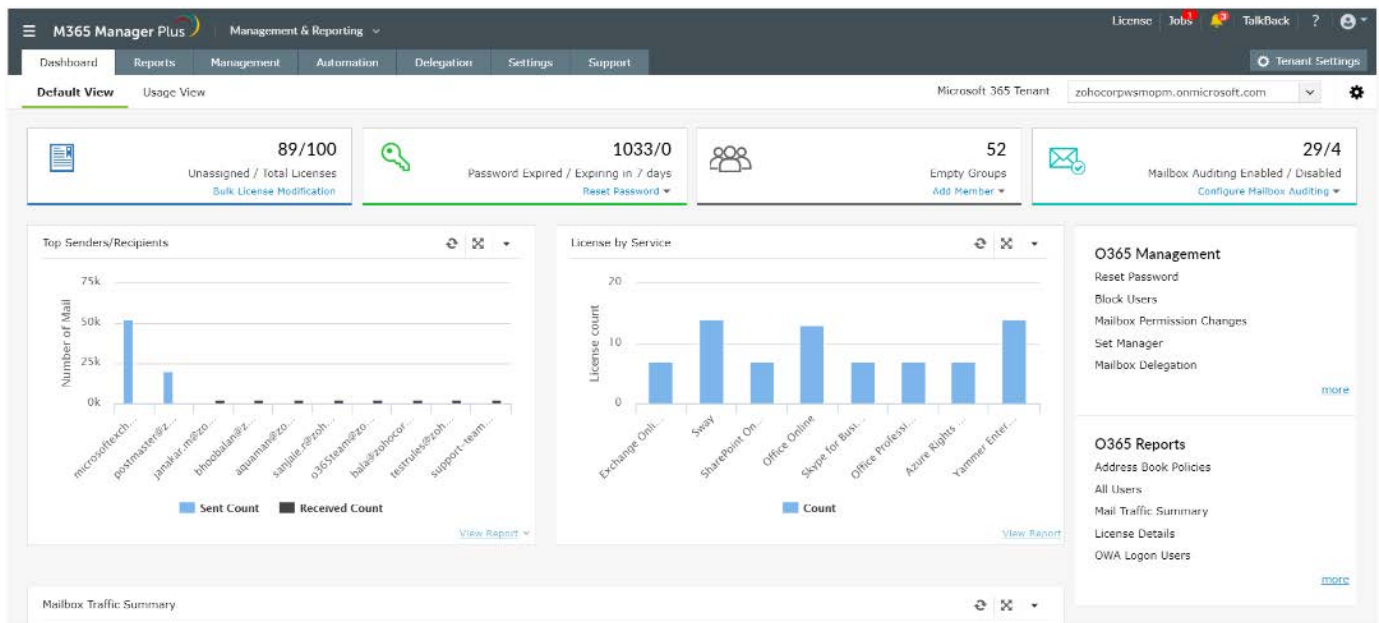
- Windows Server 2022
- Windows Server 2019
- Windows Server 2016
- Windows Server 2012 R2
- Windows Server 2012
- Windows Server 2008 R2 SP1
- Windows 10
- Windows 8.1
- Windows 8
- Windows 7 SP1

Supported browsers

- Internet Explorer 9.0 and above
- Firefox 45.0 and above
- Chrome 45.0 and above

Supported databases

- Elasticsearch (default database for audits, alerts, and content search)
- PostgreSQL (default database for object-based data)
- MS SQL (supported)



Microsoft 365 auditing and alerting

- Perform extensive audits on admin and non-admin activities in all Microsoft 365 services to ease your security concerns.
- Prevent security breaches with audit reports on malware, data loss prevention, failed logons, and more.
- Take immediate action with real-time notifications for critical events.
- Configure custom audit and alert profiles for business or non-business hours.
- Archive your audit logs as password-protected, and have them restored when needed.
- Back up Exchange Online emails, calendar entries, contacts, and tasks with periodic incremental backups, and restore them fully or granularly based on your need.

Microsoft 365 monitoring

- Monitor Microsoft 365 features and endpoints, around the clock.
- Get instant notifications when a decline in service health is detected
- Gain access to historical Microsoft 365 service health monitoring data; older than 30 days.
- View granular details on the incidents that have occurred, in the service health dashboard.
- Configure custom profiles to monitor specific features and endpoints.

Microsoft 365 content search

- Perform advanced content searches to identify data leaks and sensitive information.
- Easily search across multiple mailboxes with a single click.
- Perform pattern-based and condition-based searches to identify emails with personal information.
- Configure alerts that include detailed reports to notify you of potential spear phishing attacks.
- Create custom search profiles, and automate periodic content search.



Microsoft 365 automation

- Automate routine management tasks such as user provisioning, mailbox creation, license modification, and more.
- Create event-driven policies to execute automated tasks at specified time intervals.
- Use CSV files, M365 Manager Plus reports, and shared locations as inputs for configuring automation policies.
- Keep track of changes made to automation policies by admins and technicians with detailed audit reports.



Microsoft 365 delegation

- Delegate tasks such as password reset, account unlock, and address attribute changes to non-admin users.
- Delegate the rights of one tenant to another with the cross-tenant delegation to ensure critical tasks are always taken care.
- Keep track of technician activities with detailed audit logs.
- Delegate miscellaneous tasks such as password reset, account unlock, and address attribute changes to non-admin users and groups.

Our Products

AD360 | Log360 | ADManager Plus | ADAudit Plus | ADSelfService Plus

Exchange Reporter Plus | RecoveryManager Plus

ManageEngine M365 Manager Plus

M365 Manager Plus is an extensive Microsoft 365 tool used for reporting, managing, monitoring, auditing, and creating alerts for critical incidents. With its user-friendly interface, you can easily manage Exchange Online, Azure Active Directory, Skype for Business, OneDrive for Business, Microsoft Teams, and other Microsoft 365 services from a single console.

[\\$ Get Quote](#)

[Download](#)

Starts at \$345 for 100 Users/Mailboxes