



# **Australian Community Media** enhances its security posture by **20% with ManageEngine**



Australian Community Media, an established publisher in Australia, faced critical challenges in securing its network and endpoints. This case study delves into the strategies implemented by ACM to bolster security and enhance visibility into its systems.

## Company profile

Long-standing for over 70 years in the publishing sphere, ACM is the largest independently owned media company with a strong foothold in newspaper and e-printing. ACM operates across rural and regional areas of Australia, and its digital presence has attracted many online readers.

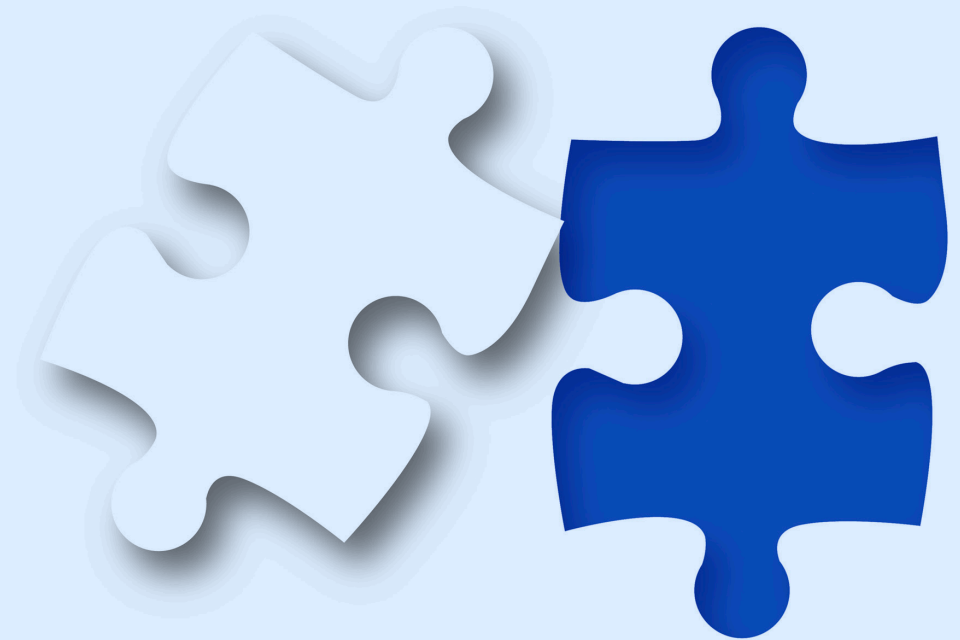
**ACM**



# Business challenges

To underpin digital operations, the company heavily relied on its IT infrastructure, including end-user computers, servers, IoT devices, cameras, etc. The firm owns a significant number of IT assets and found it challenging to secure endpoints and update critical servers to the latest version. Nearly 30% of the available servers were not patched, and this made the systems more vulnerable to attacks.

Furthermore, ACM needed deeper visibility into its network, in terms of network accessibility and bandwidth consumption. ACM sought solutions to strengthen its security and get a comprehensive view of the network activities.






## The solution


ACM chose ManageEngine tools to tackle these challenges, including Endpoint Central, Network Configuration Manager, and NetFlow Analyzer. With Endpoint Central, an unified endpoint management solution, the patch ratio increased considerably, thereby reducing the risk of potential threats.

After implementing Network Configuration Manager, ManageEngine's network configuration and change management solution, and NetFlow Analyzer, a traffic analysis and bandwidth monitoring tool, the IT team at ACM gained bandwidth data and other valuable insights on configuration changes and compliance in no time.



**The biggest strength of  
ManageEngine is they are a single  
pane of glass, and that is why I  
can confidently recommend  
their products to anybody.**

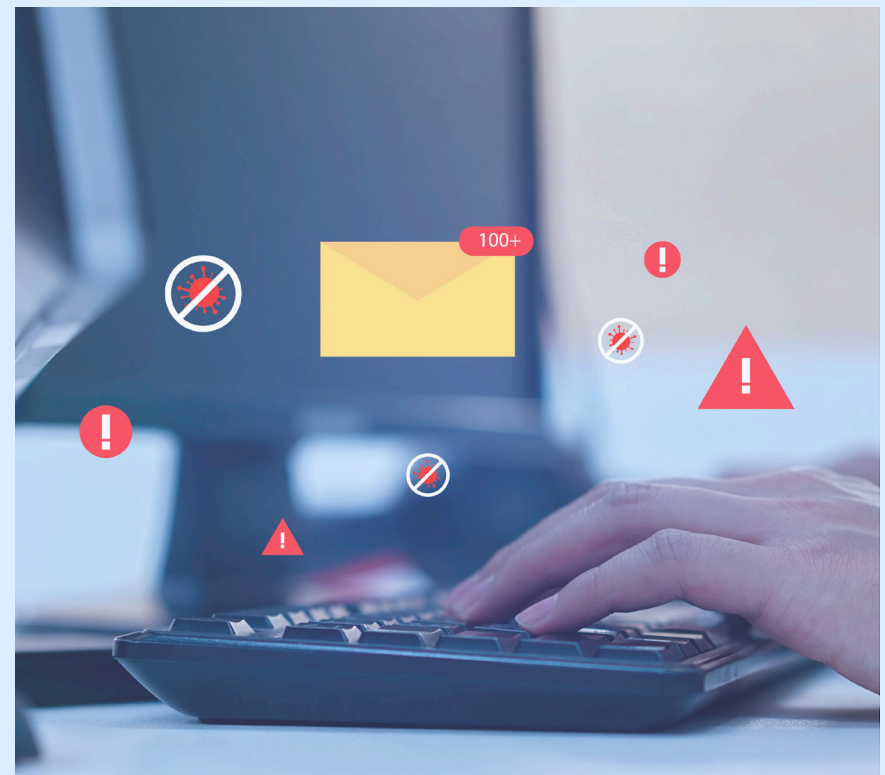
- **Senthilnathan Thirunavukkarasu**  
Network and security manager,  
Australian Community Media



# About Endpoint Central

Endpoint Central is a UEM and EPP solution that manages and secures today's digital workplace across diverse device types and OSs. Acclaimed by industry analysts like Gartner®, Forrester and IDC, it employs a single, lightweight agent to offer end-to-end device life cycle management, consolidated with security capabilities like attack surface management, threat detection and response and compliance. Robust remote troubleshooting, self-service capabilities and proactive analytics help reduce downtime and improve the overall end-user experience.

Available both on-premises and as a SaaS solution, Endpoint Central is used by more than 25,000 enterprises globally, fitting perfectly into their existing IT infrastructures and enabling interoperability. For more information, [manageengine.com/endpoint-central](https://manageengine.com/endpoint-central)



# About NetFlow Analyzer

ManageEngine NetFlow Analyzer is a flow-based, highly scalable, full-featured bandwidth monitoring and network traffic analysis solution. It monitors your network to provide end-to-end visibility into your network traffic and bandwidth usage with customizable multi-level reports, making bandwidth management easy and efficient. It analyzes behavioral patterns to proactively detect internal and external security threats such as DDoS, port scan, and zero-day attacks. With its traffic forecasting and capacity planning features, NetFlow Analyzer enables you to plan bandwidth needs and

enterprise IT requirements ahead of time. Create and audit QoS policies to ensure that critical traffic is passing through the network effortlessly. Navigate the cause of failure; identify bottlenecks; and manage and track all network traffic activities, top talkers and conversations with an overview of your entire distributed network from a single, central console. For more information about NetFlow Analyzer, visit [manageengine.com/netflow](https://manageengine.com/netflow)

# About Network Configuration Manager

ManageEngine Network Configuration Manager is a network configuration and change management (NCCM) solution with multi-vendor support for all network devices such as routers, switches and firewalls. Some of its core functionalities are advanced backup; real-time change management, including change notifications, configuration comparison and configuration versioning; compliance management with PCI DSS, SOX, HIPAA, and Cisco IOS as default policies; and firmware vulnerability management.



It also supports more than 250 device templates of major vendors. For more details, please visit [manageengine.com/network-configuration-manager/](https://manageengine.com/network-configuration-manager/)



# About ManageEngine

ManageEngine is a division of Zoho Corporation that offers comprehensive on-premises and cloud-native IT and security operations management solutions for global organizations and managed service providers. Established and emerging enterprises—including nine of every 10 Fortune 100 organizations—rely on ManageEngine's real-time IT management tools to ensure the optimal performance of their IT infrastructure, including networks, servers, applications, endpoints and more. ManageEngine has 18 data centers, 20 offices and 200+ channel partners

worldwide to help organizations tightly align their business to IT. For more information, please visit [the company site](#), follow the [company blog](#) and get connected on [LinkedIn](#), [Facebook](#), [Instagram](#) and [X](#) (formerly Twitter).

