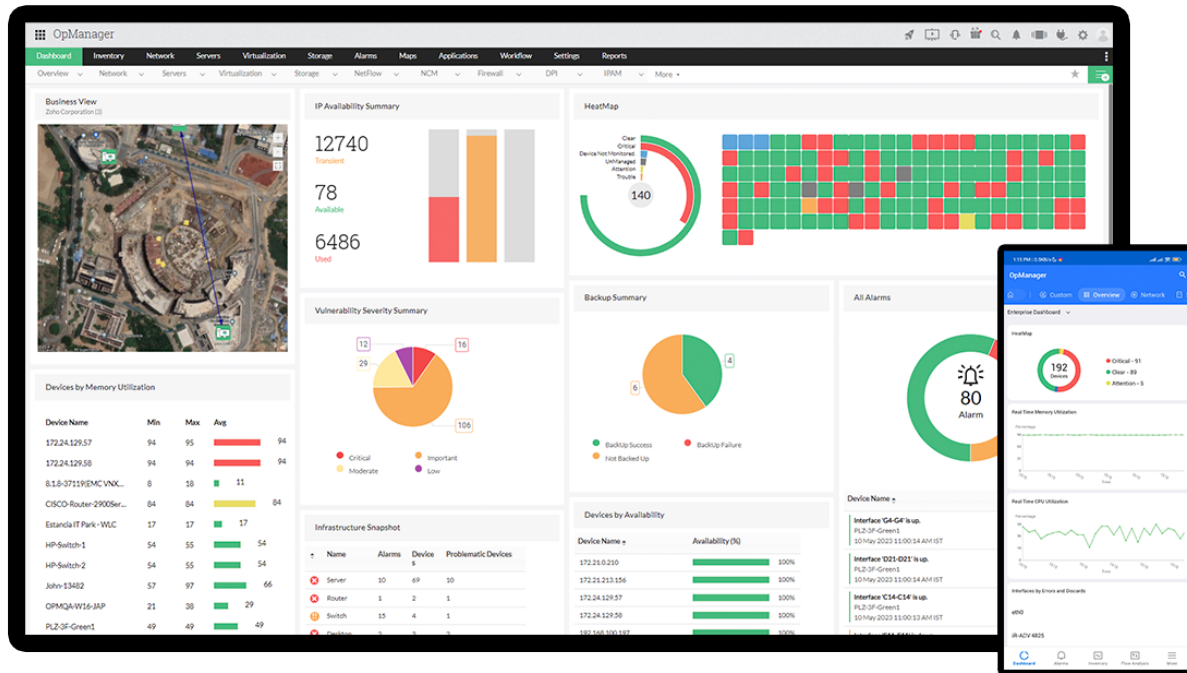


DATASHEET

OpManager



ManageEngine OpManager is an easy-to-use, one-stop enterprise-ready monitoring solution that is trusted by over 1 million IT admins around the globe to ensure maximum network availability.



It gives you in-depth visibility into network health and performance, and enables you to identify issues proactively, automate actions and seamlessly integrate with other applications for enhanced monitoring.

Why choose OpManager?



Unified Device Visibility

Monitor physical and virtual devices with unified visibility, ensuring complete network coverage without blind spots



Out-of-the-box Integrations

Integrates with ITSM, SIEM, and collaboration tools to streamline alerts, tickets, workflows and more



Built for enterprise scalability

Multi-site monitoring, flexible scalability and custom integration options



Bridge IT teams together

Pinpoint and resolve network issues proactively to minimize disruptions



Accelerated time-to-value

Rapid setup and deployment extracts more value from full-stack monitoring



Drive business growth

Better decisions unlock operational efficiencies and business growth

Exclusive features

1. Root cause analysis

Correlate performance data across devices, interfaces, virtual environments, and dependent components using a centralized console, enabling faster identification of the root cause of network issues.

2. Adaptive Thresholds

Dynamically baseline performance metrics and adjust threshold values for critical monitors using machine learning-based algorithms, improving alert accuracy and reducing false positives.

3. Organization Map

OpManager's Organization Map visually links IT infrastructure to business services and departments, helping teams quickly understand how device issues impact operations and prioritize incident resolution.

4. Network Path Analysis

Visualize and continuously monitor network paths to analyze performance, route patterns, and historical behavior across source and destination endpoints, enabling identification of communication delays and route-level performance issues.

5. Lightweight Remote Collector with DHCP and DNS Insights

Deploy a lightweight Remote Collector to securely capture local telemetry and DPI data from branch locations. With built-in DHCP and DNS Insights, gain visibility into client activity, lease patterns, query flows, and failure diagnostics for faster issue resolution at the network edge.

6. Dedicated Capacity Planning Dashboard

Gain actionable insights into resource utilization with a dedicated capacity planning dashboard. Monitor usage trends, receive forecast-based alerts, and identify bottlenecks across devices and interfaces to support data-driven infrastructure scaling.

7. AI-powered monitoring with Zia Insights and Zia Dashboard

OpManager enhances monitoring with AI-driven capabilities such as Zia Insights and Zia dashboards that surface performance anomalies and trends. AI summaries and natural-language script generation help teams analyze issues faster and simplify troubleshooting.

8. Flexible Lite Device Licensing

Extend monitoring coverage with lite device licensing for high-volume assets such as access points, WAN IPs, URL monitors, and availability-based devices, allowing cost-effective scaling without increasing licensing overhead.

Add-ons & Plug-ins

Extend OpManager's capabilities with add-ons to monitor application performance, analyze traffic, track configuration changes, and manage firewall policies, IP addresses, and switch ports—all from a unified console.

Applications Manager (Plug-in)

Monitor application performance across on-premises and cloud environments with correlated application and network metrics, enabling teams to quickly identify whether issues originate from the application layer or underlying infrastructure.

NetFlow Analyzer (Add-on)

Analyze real-time bandwidth usage and traffic patterns to identify high-consuming applications and users, helping optimize network utilization and prevent congestion during peak usage.

Firewall Analyzer (Add-on)

Monitor firewall logs and analyze security policies to gain visibility into network activity, helping detect anomalies, audit configurations, and ensure compliance with security standards.

Network Configuration Manager (Add-on)

Track and manage configuration changes across network devices with version control and change detection, enabling quick identification of unauthorized changes and faster restoration to stable states.

IPAM & SPM (Add-on)

Manage IP address space and switch ports with centralized visibility, helping prevent IP conflicts, track utilization, and optimize resource allocation across dynamic network environments.

Editions

To better suit your monitoring needs, OpManager is now available in 3 editions.

| Standard | Professional | Enterprise |
|--|---|--|
| <ul style="list-style-type: none"> • Network Discovery • Availability Monitoring • Server, Switch, and Interface Monitoring • SNMP, WMI and CLI Monitoring • Syslog and EventLog Monitoring • File/Folder Monitoring • Script Monitoring • Cisco ACI and Meraki Monitoring • Customizable Dashboard • Business Views • Alarm Escalation • Android/iOS Mobile Applications • Third Party Integrations • Scales up to 1,000 devices • Starts @ 245 USD for 25 devices | <ul style="list-style-type: none"> • Everything in Standard Edition, and • Layer 2 Discovery • Discovery Rule Engine • Virtual Environment Monitoring • Agent-Based Monitoring • Hardware Monitoring • VLAN Monitoring • AD, Exchange Server, and MS SQL Monitoring • REST API Access • NOC Views, Widgets • IT Workflow Automation • Forecast Reports • Multi-Language Support • Scales up to 1,000 devices • Starts @ 345 USD for 25 devices | <ul style="list-style-type: none"> • Everything in Professional Edition, and • Multi-Site Monitoring • Up to 180 days of data maintenance • Failover Support • Scales up to 30,000 devices out of the box • Supports 50000 interfaces • Starts @ 11,545 USD for 250 devices |

Minimum System Requirements
To manage up to 1k devices.

CPU : Intel Xeon 2.5 GHz, 4 cores / 8 threads or higher
Ram Size : 16 GB
Hard Disk : 40 GB

OS Windows : Windows 10, Windows 11, Windows Server 2025 / 2022 / 2019 / 2016
OS Linux : Ubuntu 16 to 25/ Fedora 42/ Red Hat 7 to 10/ Opensuse 15/ Debian 11 to 13/ CentOS Stream 9,10/ Rocky 10/ BOSS 10
Database : SQL 2022 (from build 12.8.452), SQL 2019, SQL 2017, SQL 2016, OpManager bundled PostgreSQL

Minimum System Requirements
To manage up to 50k interfaces or 10k devices.

CPU : Intel Xeon 2.5 GHz, 4 cores / 8 threads or higher
Ram Size : 16 GB
Hard Disk : 60 GB

OS Windows : OS Windows: Windows 10, Windows 11, Windows Server 2025/ 2022/ 2019/ 2016
OS Linux : Ubuntu 16.04 to 22.04/ Fedora 37/ Red Hat 7 to 9.4/ Opensuse 15.4/ Debian 11 to 11.6/ CentOS Stream 9,10/ Rocky 10/ BOSS 10
Database : SQL 2022 (from build 12.8.452), SQL 2019, SQL 2017, SQL 2016, OpManager bundled PostgreSQL

For detailed system requirements, click [here](#).



Telephone Number

Call Toll free : +1 888 720 9500

Alternate number

US:+1 888 791 1189 | Intl:+1 925 924 9500 | Aus: 1800 631 268
 UK: 0800 028 6590 | CN:+86 400 660 8680

Mail

opmanager-support@manageengine.com.