



Corporation  
**Fact Sheet**

---

[zohocorp.com](http://zohocorp.com)

# About Zoho Corporation

Zoho Corporation, founded in 1996, is a privately held technology company with customers spread across the globe.

Profitable since its inception, the organization now has millions of users around the world and offers a diverse range of products and services.

As the product portfolio diversified, the organization restructured itself into three main divisions: ManageEngine, Zoho.com, and WebNMS.

## ManageEngine

### Bringing IT together

---

Comprehensive IT management software for all your business needs.

- Service management
- Identity and access management
- Unified endpoint management and security
- Security information and event management
- IT operations management
- Advanced IT analytics

[www.manageengine.com](http://www.manageengine.com)



### The Operating System for Business

---

Zoho has everything businesses need to boost sales, step up productivity, and manage all day-to-day activities.

- Tightly integrated
- Ready for mobile

[www.zoho.com](http://www.zoho.com)



### Internet of things for your enterprise

---

- IoT Platform for connected enterprise applications.
- Customized IoT Solutions for energy, remote, and mobile asset management.
- More than 25,000 multi-vendor network management

[www.webnms.com](http://www.webnms.com)

## History

---

Formerly known as AdventNet Inc., Zoho Corporation started its operations in 1996. It was profitable since its inception and expanded into the Japanese market with network management software by 2001. The company started to diversify in 2005 with the introduction of Zoho Writer. By 2009, as the product portfolio became vast and diverse, the company was rechristened Zoho Corporation, which now serves as the umbrella firm for three distinct divisions: **ManageEngine, Zoho.com and WebNMS.**

## Philosophy

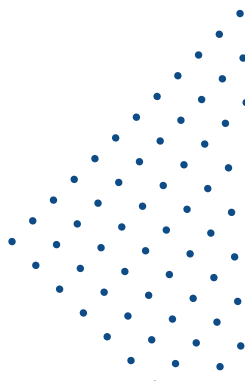
---

No frills. R&D driven. One hundred percent customer-focused. Zoho Corporation believes in providing customers with the best software at affordable prices.



“A customer is the most important visitor on our premises. He is not dependent on us. We are dependent on him. He is not an interruption in our work - he is the purpose of it. We are not doing him a favor by serving him. He is doing us a favor by giving us the opportunity to serve him.”

**- Mahatma Gandhi**





ManageEngine crafts comprehensive IT management software with a focus on making IT admins' jobs easier. Its 90+ products and free tools cover everything that IT needs, all at affordable prices. From network and device management to security and service desk software, ManageEngine is bringing IT together for an integrated, overarching approach to optimizing IT.

## Managing IT together



ManageEngine offers more than 90 tools to help manage all aspects of IT operations, including networks, servers, applications, desktops, mobile devices, service desks, Active Directory, and security. And they have built the tools from the ground up with contextual integrations to make sure that their customers can manage IT together, too.

## Simplifying IT together



ManageEngine wants to make IT simple. And no, that does not mean limited functionality. It means fully functional products that have everything that customers need, laid out simply in a UI that won't frustrate users. On top of that, ManageEngine's applications are easy to download, install, configure, and deploy—no third-party support services needed.

ManageEngine's product philosophy is driven by the customer and it has built a strong, in-house R&D team to back that up. Our employees work around the clock to turn product requests into reality. And our software licenses aren't limited by the size of our customers' businesses or what their futures might look like. ManageEngine's software scales with the customer, from small local outfits to large multi-national enterprises.

## Valuing IT together

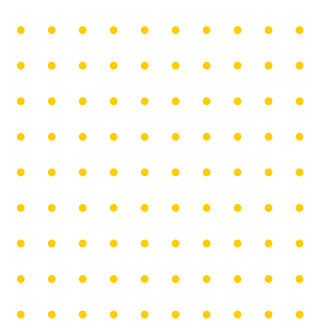
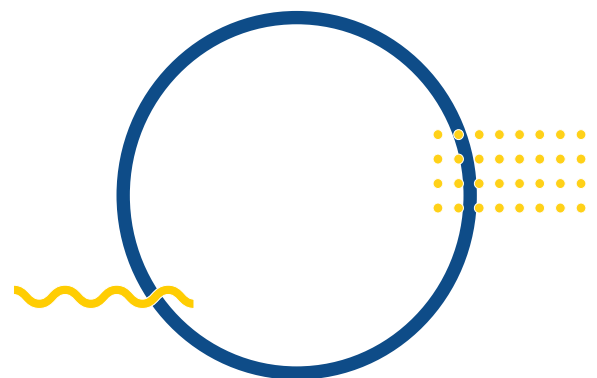
---

More expensive doesn't always mean better. In fact, ManageEngine has focused its efforts on in-house engineered solutions and taken a simple, transparent approach to the business of IT management software. ManageEngine does not pay extra for an aggressive sales team or costly consultants, and these savings are passed on to the customer. ManageEngine's pricing doesn't include any hidden costs and is available directly on the company's website.

## Bringing IT together

---

At the end of the day, IT is about fulfilling customers' needs. As organizations prepare for the IT management challenges ahead, ManageEngine will lead the way with new solutions, contextual integrations, and other advances that can only come from a company singularly dedicated to its customers. And as a division of Zoho Corporation, ManageEngine will continue pushing for the tight business-IT alignment that its customers will need to seize future opportunities.



# ManageEngine

## Market Served

ManageEngine crafts the industry's broadest suite of IT management software. It has everything organizations need—more than 90 products and free tools—to manage all components of IT operations. From desktops, mobile devices, networks, and servers, to applications, service desks, Active Directory, and security, ManageEngine brings IT together.

Since 2002, IT teams have turned to ManageEngine for affordable, feature-rich software that's easy to use.

ManageEngine's on-premises and cloud solutions power the IT of over 180,000 companies around the world, including nine out of every ten Fortune 100 companies.

# 90+

product and free tools for real-time IT management.



More than **3 million** IT users



**Award-winning** product portfolio and best-in-class functionality

# 9/10

Fortune 100 companies are ManageEngine customers



Serving companies in more than **190 countries** that manage complex, multi-vendor, and hybrid IT infrastructures.

## ManageEngine products

---

### Service management

---

#### Enterprise and IT service management

**ServiceDesk Plus:** Full-stack ITSM suite for enterprises with integrated ITAM capabilities ([On-premises](#) | [Cloud](#) | [MSP](#))

#### Customer service management

**SupportCenter Plus:** Web-based customer support with Active Directory integration ([On-premises](#))

#### IT asset management

**AssetExplorer:** ITAM with built-in CMDB ([On-premises](#))

### Identity and access management

---

#### Active Directory management

**ADManager Plus:** Active Directory, Microsoft 365, and Exchange management and reporting ([On-premises](#))

**ADSelfService Plus:** Password self-service, endpoint MFA, and enterprise SSO ([On-premises](#))

**Exchange Reporter Plus:** Reporting, auditing, and monitoring for hybrid Exchange and Skype ([On-premises](#))

**RecoveryManager Plus:** Active Directory, Microsoft 365, and Exchange backup and recovery ([On-premises](#))

#### Identity governance and administration

**AD360\*:** Integrated identity and access management ([On-premises](#))

**M365 Manager Plus:** Microsoft 365 management, reporting, and auditing ([On-premises](#))

**Identity Manager Plus:** Secure SSO for enterprise applications ([Cloud](#))

#### Privileged access management

**PAM360\*:** Comprehensive privileged access management ([On-premises](#) | [MSP](#))

**Password Manager Pro:** Privileged account management ([On-premises](#) | [MSP](#))

**Key Manager Plus:** SSH key and SSL certificate management ([On-premises](#))

**Access Manager Plus:** Privileged session management ([On-premises](#))

---

\* **Integrated suite**

## ManageEngine products

---

# Unified endpoint management and security

---

## Endpoint management

**Desktop Central\***: Integrated desktop and mobile device management  
(On-premises | Cloud | MSP)

**Mobile Device Manager Plus**: Comprehensive mobile device management (On-premises | Cloud | MSP)

**OS Deployer**: OS imaging and deployment (On-premises)

**Remote Access Plus**: Remote access and support (On-premises | Cloud)

**Patch Manager Plus**: Automated multi-platform patch management  
(On-premises | Cloud)

**Patch Connect Plus**: Automated SCCM third-party patch management  
(On-premises)

**RMM Central**: Unified remote monitoring and management solution (MSP)

## Endpoint security

**Browser Security Plus**: Browser security and management (On-premises)

**Application Control Plus**: Application control and endpoint privilege management (On-premises)

**Vulnerability Manager Plus**: Integrated threat and vulnerability management (On-premises)

**Device Control Plus**: Data leak prevention for removable devices  
(On-premises)

# Security information and event management

---

## Security information event management and user entity behavior analytics

**Log360\***: Comprehensive SIEM with advanced threat mitigation and ML-driven UEBA (On-premises | Cloud)

**EventLog Analyzer**: Log management, IT auditing, and compliance management (On-premises)

**Firewall Analyzer**: Firewall rule, configuration, and log management  
(On-premises)

**ADAudit Plus**: Active Directory auditing and reporting (On-premises)

**SharePoint Manager Plus**: SharePoint reporting and auditing (On-premises)

**M365 Security Plus**: Microsoft 365 security and protection (On-premises)

**Cloud Security Plus**: Log management and monitoring for cloud platforms  
(On-premises)

**DataSecurity Plus**: File auditing, data loss prevention, and data risk assessment (On-premises)

**FileAnalysis**: File security and storage analysis solution (On-premises)

---

\* Integrated suite



# ManageEngine Products

---

## IT operations management

---

### Network performance monitoring

**OpManager Plus\***: Integrated network, server, traffic, configuration, IP address, and switch port management (On-premises)

**OpManager**: Network performance monitoring (On-premises | MSP)

**NetFlow Analyzer**: Bandwidth monitoring and traffic analysis (On-premises)

**Network Configuration Manager**: Network change and configuration management (On-premises)

**OpUtils**: IP address and switch port management (On-premises)

### Application performance monitoring

**Applications Manager**: Server and application performance monitoring (On-premises)

**Site24x7\***: Website, server and application monitoring (Cloud | MSP)

**Site24x7 APM Insight**: Application performance monitoring and troubleshooting (Cloud)

### IT incident management

**AlarmsOne**: IT alert management (Cloud)

**Site24x7 StatusIQ**: IT incident communication (Cloud)

## IT analytics

---

**Analytics Plus**: Advanced IT analytics (On-premises)

**Site24x7 CloudSpend**: Cost analytics for the public cloud (Cloud)

---

\* Integrated suite

## Free tools to manage your IT

---

### Active Directory management

AD query tool  
CSV generator  
Last logon reporter  
Terminal session manager  
AD replication manager  
Sharepoint manager  
DMZ port analyzer  
Domain and DC roles reporter  
Local users manager  
DC monitor  
Empty password reporter  
Duplicates identifier  
Password policy manager  
Free password expiry notifier  
Exchange health monitor  
DNS reporter  
Service account management tool  
Weak password users report  
AD LDS object management tool  
PST migration tool  
Exchange Server Monitoring (.exe)

### Endpoint management

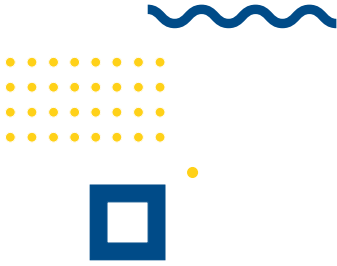
Remote desktop connection  
software inventory  
system inventory  
currently logged on user  
remote task manager  
hard disk space detector  
Remote command prompt  
remote device manager  
local user/ group list  
shutdown/restart  
Network share browser  
GPO update  
Wake on LAN  
Laptop battery power monitor  
Join/ unjoin computer

## Free tools to manage your IT

---

### IT operations management

SNMP MibBrowser (.exe)  
Ping/Traceroute/DNS Lookup etc., (.exe)  
Windows Server Health Monitoring (.exe)  
MS SQL Server Performance Monitoring (.exe)  
VMware ESX & ESXi servers Monitoring (.exe)  
Hyper V Performance Monitoring (.exe)  
Hyper V Configuration Tool (.exe)  
Process Traffic Monitoring (.exe)  
Windows Services Monitoring Tool (.exe)  
Disk Monitoring Tool (.exe)  
Syslog Forwarding Tool (.exe)  
VM Configuration Tool (.exe)  
SharePoint Monitoring Tool (.exe)  
SNMP Enabler Tool (.exe)  
Azure cloud monitoring (.exe)  
Citrix XenServer Monitoring (.exe)  
Amazon EC2 cloud instances Monitoring (.exe)  
Remote System Process Monitoring Tool (.exe)  
Ping Tool iPhone App  
Ping Tool  
Windows Server and Service Monitoring Android App  
Windows Server and Service Monitoring iPhone App  
Mib Browser (.exe)  
Ping Tool Android App  
Mib Browser Android App

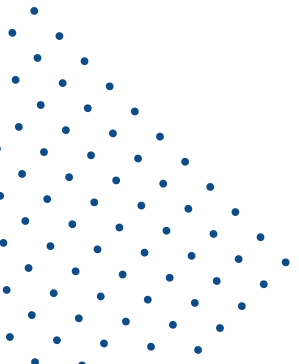


## Zoho.com

Zoho's craft and passion is software. Zoho creates beautiful software to solve business problems. Over the past decade, the Zoho suite has emerged as a leader on the cloud and on people's devices. As much as Zoho loves software, its most valuable assets are its culture and people. At Zoho, people spend years mastering their craft. In an industry where technology changes at a relentless and dizzying pace, Zoho values persistence and endurance as highly as adaptability. Zoho is committed to spending customers' money wisely. It invests more in product development and customer support than in sales and marketing. By keeping its cost of attracting customers low, Zoho keeps its prices affordable.

Zoho views itself as an integrated whole; not as a group of organizational silos that barely talk to each other, or worse, work at cross purposes. That philosophy and worldview is reflected in its product suite. The Zoho suite is as broad as it is deep. Zoho views the suite as an integrated whole, far greater than the sum of its parts.

The Zoho suite wasn't built in a day; it has taken the better part of a decade to come this far. Unlike its competitors, who periodically wake up and discover gaping product holes they have to fill urgently with acquisitions, Zoho crafts software with patience and passion. Its strategy is born of the realization that most acquisitions fail in this industry, and the customer is the one who pays the price. Zoho has made a commitment to offer real depth along with breadth in its offerings.





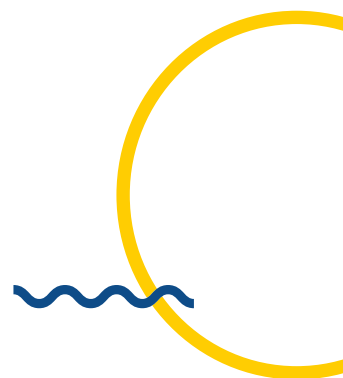
## Market Served

Zoho is the operating system for business—a single cloud platform with all the necessary applications to run a business entirely from the cloud. Businesses can acquire and manage customers using Zoho’s marketing, sales and customer support applications—Campaigns, CRM and Desk—and can then empower employees to create, store and distribute content on the cloud with Zoho’s productivity and collaboration applications—Office, Mail and Docs. Additionally, businesses can run their own operations on Zoho’s finance and human resources applications—Books, People and Recruit.

More than 60 millions users around the world, across hundreds of thousands of companies, rely on Zoho every day to run their businesses—including Zoho itself. A business can choose to run the entire Zoho suite or just a single application. Zoho applications are available directly through [zoho.com](http://zoho.com), or through an ecosystem of hundreds of worldwide Zoho partners.

For more information,  
please visit

[www.zoho.com](http://www.zoho.com)



# Zoho products

---

## Sales & marketing

CRM  
Bigin  
Campaigns  
Forms  
Sign  
Social  
SalesIQ  
Survey  
Salesinbox  
Sites  
ContactManager  
Pagesense  
Backstage  
Commerce  
Bookings  
Marketinghub

## Email & Collaboration

Mail  
Cliq  
Workdrive  
Docs  
Writer  
Sheet  
Show  
Projects  
Sprints  
Bugtracker  
Connect  
Meeting  
Vault  
Showtime  
Notebook  
Wiki  
TeamInbox  
TransMail

## Finance

Books  
Inventory  
Invoice  
Subscriptions  
Expense  
Checkout  
Payroll

## Human Resources

Recruit  
People  
Workerly  
Backtowork

## IT & Help Desk

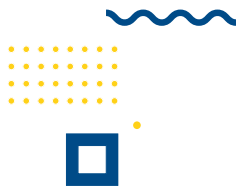
Desk  
Assist  
ServiceDesk Plus  
Mobile Device management  
Patch Manager Plus  
Remote Access Plus  
Site24x7  
Log Management Cloud  
Identity Management  
Catalyst  
Lens  
Desktop Central

## Business Intelligence

Analytics

## Custom Solutions

Creator  
Flow  
Office Integrator  
Orchestly



WebNMS, the IoT software division of Zoho Corporation, is a leading provider of an enterprise IoT platform and solutions that maximize the potential of connected business infrastructure. WebNMS' platform is designed to streamline enterprise operations by optimizing energy expenses and managing geographically dispersed, capital-intensive assets. This key player in the market encourages an enterprise-ready IoT ecosystem through its channel partners: systems integrators, software developers and resellers, sensor and gateway manufacturers, and telecom carriers.

### **Market Served**

The WebNMS platform caters to three niche functionalities: energy management, remote asset monitoring, and management and location tracking with on-board diagnostics. The platform stands out amongst the competition with its well-defined enterprise capabilities and superior edge computing component, EdgeX. With EdgeX, systems integrators and solution providers can seamlessly connect to multiple devices, fetch data, and monitor and manage numerous assets from a single console.

WebNMS' IoT platform, the Symphony IoT platform, is built for enterprise IoT operations in particular, facilitates predictive maintenance, data analytics, cross functional data blending, cross-enterprise operations, and legacy device retrofitting. It is developer-friendly, customizable, and built with functionalities that promote efficiency, minimize costs, and maximize returns. The platform is widely used in energy management operations, smart city projects, building management, centralized asset management, and supply chain streamlining. The major advantages of adopting the Symphony IoT platform in enterprise operations are increased uptime, seamless last mile data acquisition, simplified network edge, and seamless blending of IT and OT. Built over a seasoned telecom network framework, WebNMS IoT has won several awards and recognitions, including the Express IT award for two consecutive years.

# WebNMS Solutions

---

## IoT platform

WebNMS IoT Platform  
EdgeX Intelligence  
Industry Solutions for OEMs

## Remote Management

Remote Asset Management  
ATM Site  
Cell Tower  
Data Center Infrastructure

## Energy Management

Energy Management  
Smart Metering  
Smart Lighting  
Diesel Generator

## Fleet Management

## Smart Cities

## Connected Business

Integrated Transport  
Integrated Energy  
Integrated Facility

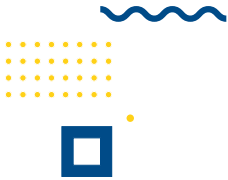
## Equipment vendor solutions

Java SNMP API  
.NET SNMP API  
SNMP API Android Edition  
Java SNMP Agent  
C SNMP Agent  
SNMP Adaptor for JMX  
CLI API / TL1 API

## Test toolkit

Simulation Toolkit  
SNMP Utilities  
Agent Tester



**Ownership**

Zoho Corporation Pvt. Ltd.  
is privately held.

**Website**

[www.zohocorp.com](http://www.zohocorp.com)

**Phone**

+1-888-720-9500

+1-888-791-1189

**Fax**

+1-925-924-9600

**Email**

[info@zohocorp.com](mailto:info@zohocorp.com)

**Address**

Zoho Corporation  
6800 Burleson Rd,  
Building 310, Suite 200,  
Austin, TX 78744

