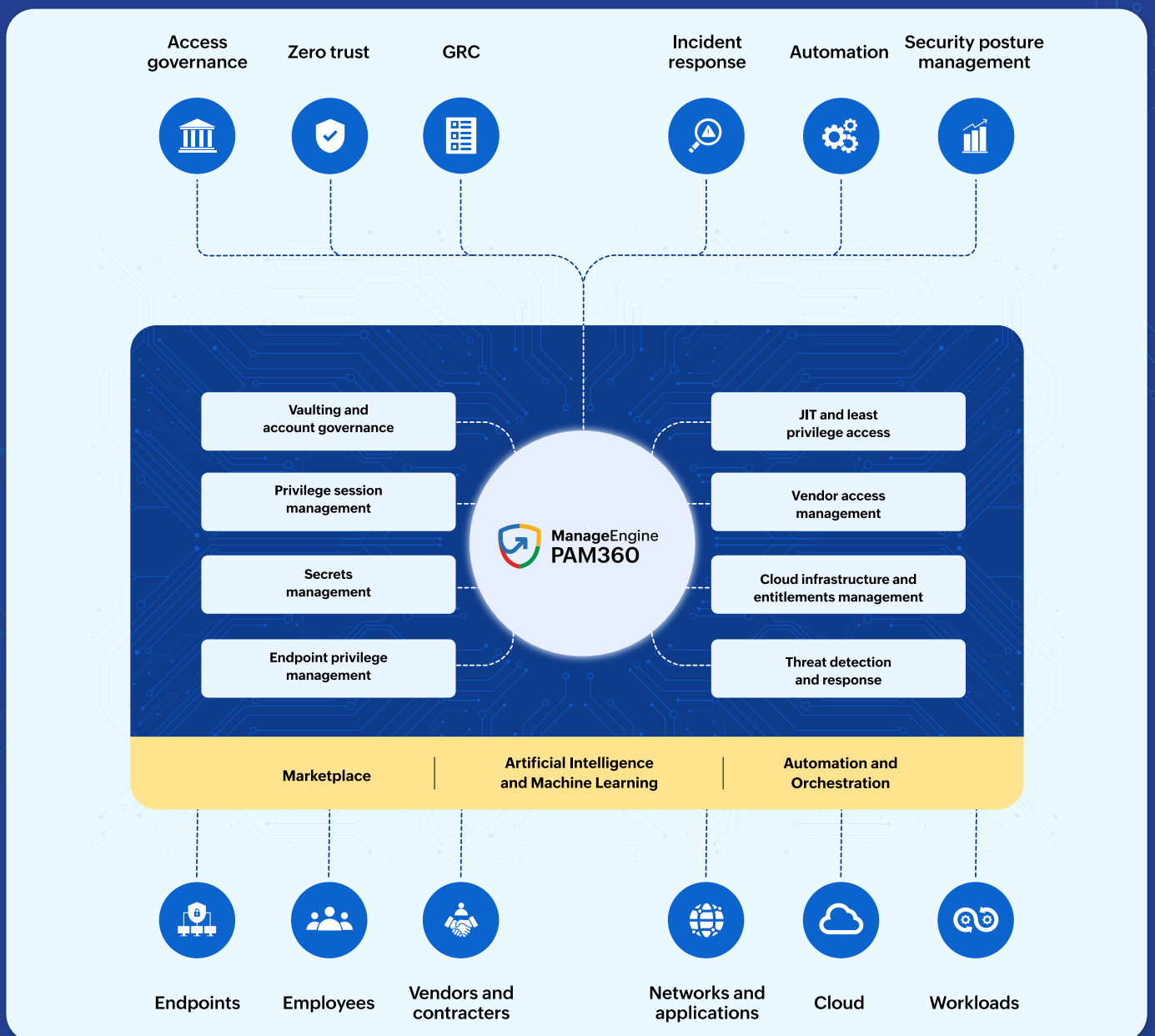




Unified privileged access management platform for modern enterprises



Trusted by leading global enterprises



With identity types evolving and access needs growing, organizations face two persistent challenges:

Fragmented operations and a steady rise in insider-related breaches. Identity systems are often managed in silos across IT, security, and compliance, leading to gaps and inefficiencies. Simultaneously, insider threats, whether inadvertent or intentional, remain a leading cause of breaches.

PAM360 delivers comprehensive security for every identity, human and non-human, by centralizing control, eliminating operational silos, and streamlining privileged access.

Adaptive security that evolves with your enterprise

PAM360 takes a layered, risk-aware approach to privileged access management, closing blind spots and significantly improving overall identity hygiene. Designed to meet modern access security demands, it equips organizations with precise, scalable controls to manage and govern privileged access across the enterprise.



Secure every identity—human and non-human

Extend privileged access controls to all identities, from employees, vendors, and admins to service accounts, certificates, secrets, applications, and scripts—ensuring consistent governance and reducing risk across the board.



Stride towards zero standing privileges

Reduce always-on access down to zero by granting necessary privileges just-in-time, reducing the attack surface, and limiting the impact of compromised credentials.



Protect cloud entitlements with precision

Continuously discover and right-size permissions across your multi-cloud environments to prevent excessive access and misconfigurations.



Built-in intelligence, context-driven access policies

Leverage AI-governed access policies, actionable insights, risk scores, and behavioral analytics to make informed access decisions and respond proactively to threats.



Limitless, secure orchestration of privileged tasks

Streamline repetitive administrative actions with built-in automation capabilities, reducing manual effort, minimizing errors, and ensuring secure execution of critical tasks without compromising control.

Why organizations prefer ManageEngine for their privileged access management



Holistic ecosystem for all your IAM needs

PAM360 integrates seamlessly with ManageEngine's broader IAM suite, offering unified coverage across identity, access, cloud and endpoint security, minimizing privilege sprawl.



GRC-aligned approach to PAM

PAM360, with its comprehensive security controls and reporting capabilities, simplifies compliance with for SOX, NIS2, HIPAA, PCI DSS, GDPR, and more.



Easy to deploy with a faster time to value

All our solutions are quick to implement and manage, with most enterprises going live in under eight weeks.



Stellar support and professional services

We offer premium support, on-site consulting, and implementation assistance for our customers. Our customer success team conducts frequent health checks to help our customers identify and fix any potential glitch in their privileged access routines.



Rooted in strong principles

Backed by Zoho Corporation, our parent company, we prioritize and practice product excellence through rigorous R&D. At ManageEngine, we believe in building solutions, not acquiring them.

About PAM360

PAM360 is ManageEngine's unified privileged access management platform that helps IT teams enforce strict governance on access pathways to critical corporate assets. With a holistic approach to privileged access security, PAM360 caters to core PAM requirements and facilitates contextual integration with multiple other IT management tools, resulting in deeper insights, meaningful inferences, and quicker remedies. More than 5,000 global organizations and over one million administrators trust PAM360 with their PAM needs.

Gartner®

ManageEngine named a Challenger in the 2025 Gartner® Magic Quadrant™ for Privileged Access Management

kuppingercole ANALYSTS

ManageEngine has been named a Challenger in the 2024 KuppingerCole Leadership Compass for Privileged Access Management.



1,000,000+
admins



5,000+
customers



200+
channel partners



150+
countries



ManageEngine PAM360

<https://mnge.it/pam>

Zoho Corporation

Phone: +1.925.924.9500, +1.888.720.9500

E-mail: hello-pam360@manageengine.com