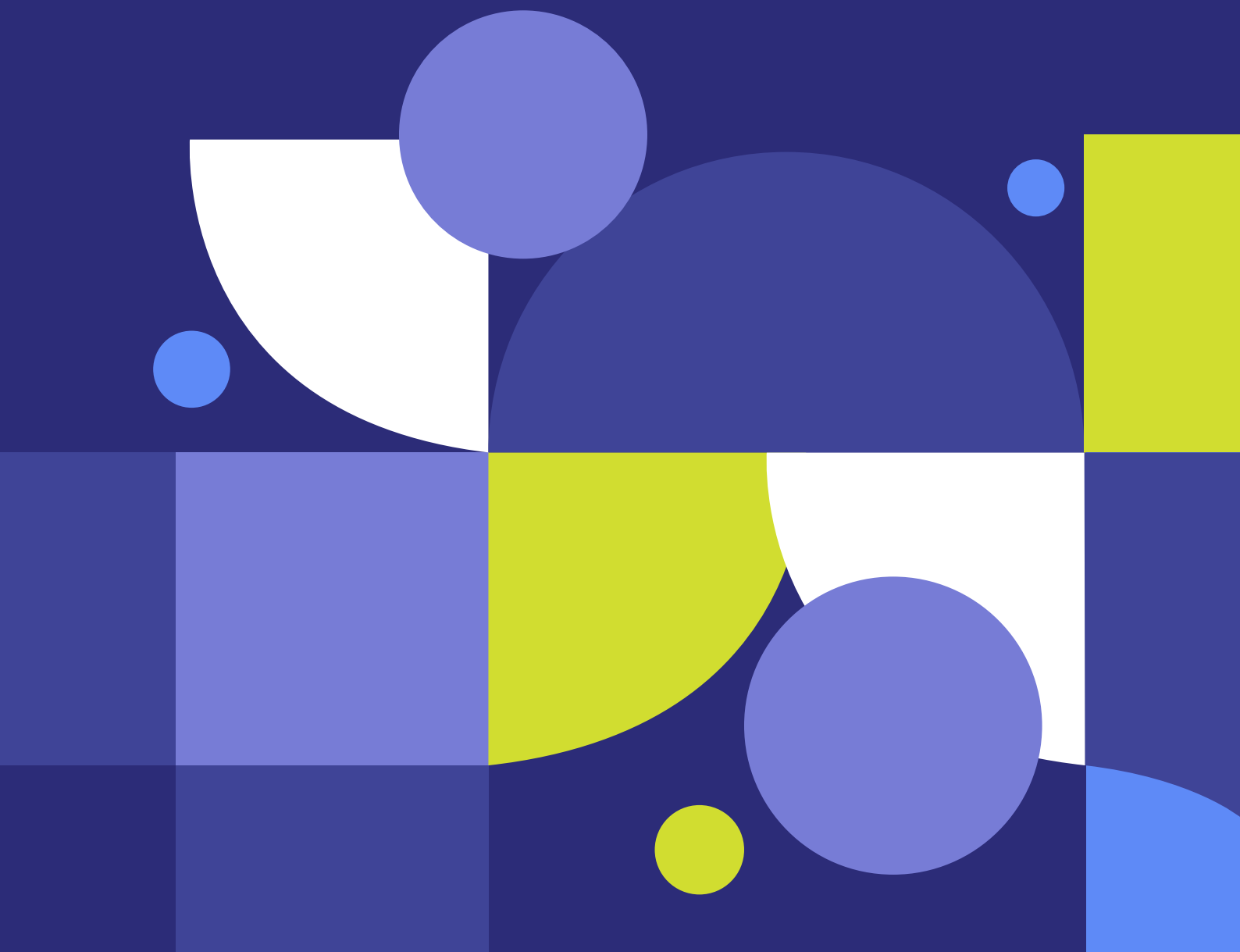




ManageEngine
PAM360



SIZING GUIDELINES



Sizing Guidelines - PAM360

This document provides guidelines for the recommended minimum hardware and software requirements to run PAM360 in your environment.

You can use these baselines for your on-premises PAM360 installation. We have categorized the requirements based on the size of the organization where PAM360 is installed: Small, Medium, and Large.

Prerequisites

Besides the standard system requirements (both hardware and software) listed in the upcoming sections, the following elements are essential for the proper functioning of the PAM360 server if you are planning to utilize PAM360's account discovery and password reset provisions:

- An external SMTP mail server to support the functioning of the PAM360 server and to send notifications to users.
- A service account that either has domain admin rights or local admin rights in the PAM360 server and in the target systems you would like to manage.
- Microsoft .NET framework.
- Visual C++ Redistributable for Visual Studio 2015 and above (for PAM360's Account Discovery and Password Reset features).

Hardware Requirements

Organization Size	Processor	RAM	Hard Disk
Small (<1000 servers, <500 keys and <500 users)	Dual Core or above	8 GB	<ul style="list-style-type: none">• 2 GB for product• 10 GB for database
Medium (<5000 servers, <1000 keys and <1000 users)	Quad Core or above	16 GB	<ul style="list-style-type: none">• 2 GB for product• 50 GB for database
Large (>5000 servers, >1000 keys and >1000 users)	Octa Core or above	32 GB	<ul style="list-style-type: none">• 2 GB for product• 100 GB for database

Note:

For session recordings, the disk space requirement may vary based on usage levels. PAM360's session recording files occupy a disc space of 1 MB/minute that excludes idle times. This way, administrators can calculate the space as per their usage.

Software Requirements

Supported Operating Systems

Windows	Linux
<ul style="list-style-type: none">• Windows Server 2025• Windows Server 2022• Windows Server 2019• Windows Server 2016	<ul style="list-style-type: none">• Ubuntu 18.04 and above• CentOS 6 and above• Red Hat Linux 9.0• Red Hat Enterprise Linux 5.X and above• AlmaLinux 9.X and above <p>Note: PAM360 goes well with any flavor of Linux and also on VMs of the above operating systems.</p>

Supported Databases

- PostgreSQL 14.17 bundled with the product.
- MS SQL Server 2016 and above

Supported Browsers

- Microsoft Edge - On Windows
- Chrome, Firefox, and Safari - On Windows, Linux, and Mac

Note:

PAM360 is optimized for 1280 x 800 resolution and above..

