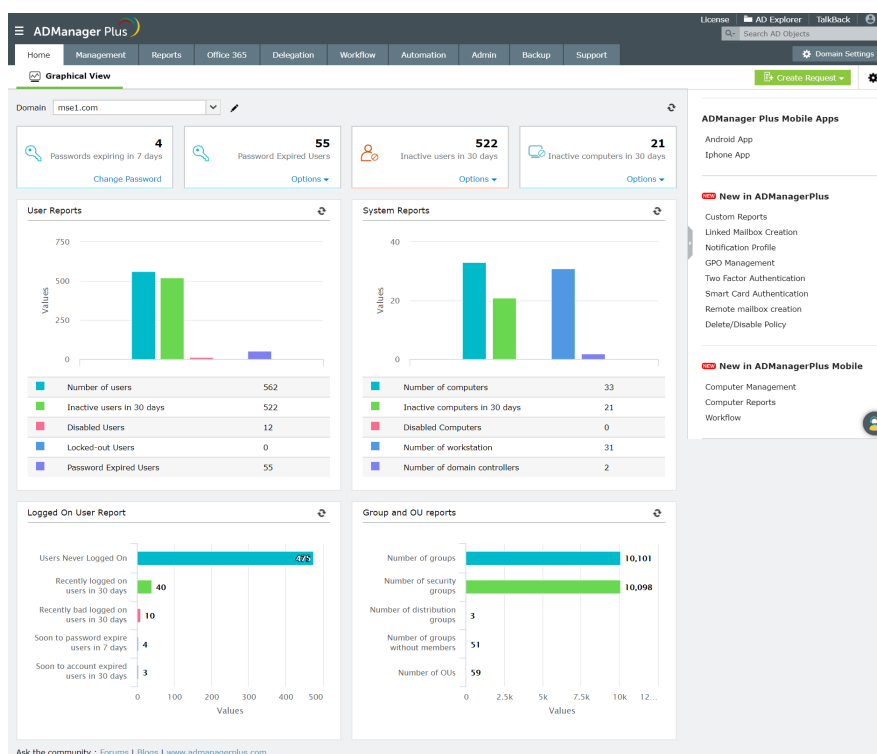


Manage Active Directory
operations more easily and
efficiently than with **ADUC**
or **PowerShell**.

Manage Active Directory operations more easily and efficiently than with ADUC or PowerShell.

ManageEngine ADManager Plus is a web-based Windows Active Directory (AD) management and reporting solution that helps AD administrators and help desk technicians meet their identity and access management (IAM) needs. With a sleek UI, ADManager Plus tackles a variety of complex tasks, like AD object backup and recovery, user account provisioning, and stale account management, and generates an exhaustive list of AD reports with ease. It also helps admins manage and report on their Exchange Server, Office 365, G Suite, and AD environments—all from a single console.



Active Directory management

ADManager Plus simplifies the management of AD objects such as users, computers, organizational units (OUs), groups, and contacts. This tool can perform:

AD bulk object creation and modification:

- 👉 Create multiple AD objects like users, computers, contacts, groups, and OUs
- 👉 Modify attributes in bulk using CSV files and templates
- 👉 Create accounts in Office 365 and G Suite, and provision Exchange mailboxes
- 👉 Assign, remove, or revoke Office 365 licenses

Automation of critical and routine management actions:

- ✦ Provision users in AD, Office 365, and Exchange
- ✦ Identify and clean up stale accounts
- ✦ Modify user accounts based on their department, team, or location
- ✦ Reset passwords, and enable or disable accounts
- ✦ Create policies to perform tasks sequentially without manual intervention

Over 200 reports with on-the-fly management

ADManager Plus offers a built-in library of over 200 reports to fetch vital information. You can:

- ✦ Access a built-in report library on AD objects with one click.
- ✦ Identify stale users, computers, and groups from reports and manage them.
- ✦ Meet auditing requirements of SOX, HIPAA, GDPR, and more.
- ✦ Create custom reports using filters or LDAP queries to meet specific needs.

The built-in report scheduler allows you to generate the necessary AD reports at specified time intervals automatically and email them to multiple users in different formats.

File server access permissions management and reporting

- ✦ Add, modify, and revoke users' or groups' NTFS and share permissions
- ✦ Get granular insights into users' and groups' file server permissions

System requirements

Supported platforms: ManageEngine ADManager Plus supports the following Microsoft Windows operating system versions:

- Windows Server 2022
- Windows Server 2019
- Windows Server 2016
- Windows Server 2012 R2
- Windows Server 2012
- Windows Server 2008 R2
- Windows Server 2008
- Windows 10
- Windows 8.1
- Windows 8
- Windows 7

Recommended browsers: ManageEngine ADManager Plus requires one of the following browsers to be installed in the system. Use the latest version of the browser for better security and the best possible experience.

- Internet Explorer 8 and above
- Microsoft Edge
- Google Chrome
- Mozilla Firefox

Recommended screen resolution: 1366 x 768 pixels or higher

Supported databases:

- PostgreSQL (default database bundled with the product)
- MS SQL

Note: If your ADManager Plus server has MySQL installed, we recommend migrating to PostgreSQL.

Our Products

AD360 | Log360 | ADAudit Plus | ADSelfService Plus | M365 Manager Plus | RecoveryManager Plus

ManageEngine **ADManager Plus**

ManageEngine ADManager Plus is a unified management and reporting solution for Active Directory, Microsoft 365, Exchange, Skype for Business, and Google Workspace. With an intuitive, easy-to-use interface, ADManager Plus handles a variety of complex tasks and generates an exhaustive list of Active Directory reports, some of which are essential requirements to satisfy compliance audits. For more information about ADManager Plus, visit manageengine.com/ad-manager.

\$ Get Quote

↓ Download