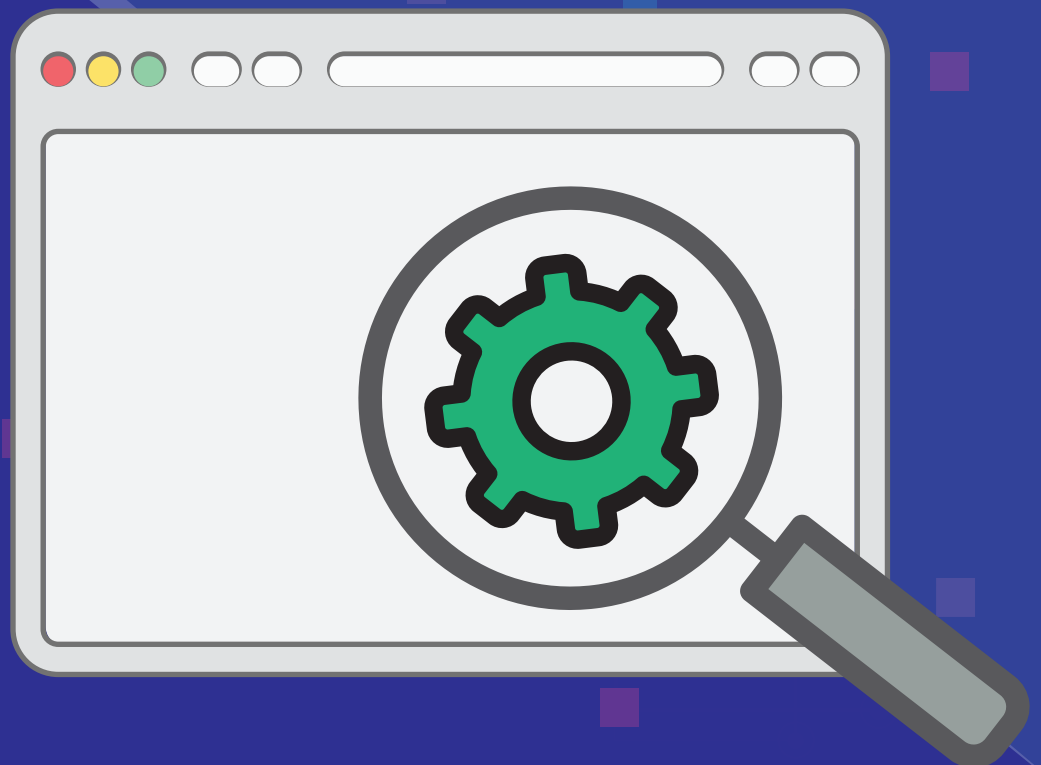


ManageEngine
ADManager Plus

Find a GPO's

Administrative Template setting using quick search

www.admanagerplus.com



Find a GPO's Administrative Template setting using quick search

With over 3,000 Administrative Template settings, managing all these Group Policy settings just isn't easy. Often you might know only a few keywords relating to a particular setting; you might not even be sure whether it is a Computer Configuration setting or a User Configuration setting. We know how difficult it is to navigate through each User or Computer Configuration setting folder to find the right setting.

ADManager Plus offers a search option to help you quickly find settings across User Configurations and Computer Configurations, and make changes to the Administrative Template settings once you've found them.

Settings	State	Path
All Removable Storage classes: Deny all access	Not Configured	System\Removable Storage Access
Disable binding directly to IPPropertySetStorage without intermediate layers.	Not Configured	Windows Components\File Explorer
Ping the settings storage location before sync	Not Configured	Windows Components\Microsoft User Experience Virtualization
Removable Storage	Not Configured	Windows Components\Microsoft Management Console\Restricted\Permitted snap-ins\Extension snap-ins
Removable Storage Management	Not Configured	Windows Components\Microsoft Management Console\Restricted\Permitted snap-ins
Set application cache storage limits for individual domains	Not Configured	Windows Components\Internet Explorer\Internet Control Panel\General Page\Browsing History
Set default storage limits for websites	Not Configured	Windows Components\Internet Explorer\Internet Control Panel\General Page\Browsing History
Set indexed database storage limits for individual domains	Not Configured	Windows Components\Internet Explorer\Internet Control Panel\General Page\Browsing History
Set maximum application caches storage limit for all domains	Not Configured	Windows Components\Internet Explorer\Internet Control Panel\General Page\Browsing History
Set maximum indexed database storage limit for all domains	Not Configured	Windows Components\Internet Explorer\Internet Control Panel\General Page\Browsing History
Settings storage path	Not Configured	Windows Components\Microsoft User Experience Virtualization
Share and Storage Management	Not Configured	Windows Components\Microsoft Management Console\Restricted\Permitted snap-ins
Share and Storage Management Extension	Not Configured	Windows Components\Microsoft Management Console\Restricted\Permitted snap-ins\Extension snap-ins
Storage Manager for SANs	Not Configured	Windows Components\Microsoft Management Console\Restricted\Permitted snap-ins
Storage Manager for SANS Extension	Not Configured	Windows Components\Microsoft Management Console\Restricted\Permitted snap-ins\Extension snap-ins

Figure 1: Searching in Administrative Template settings for the required settings.

This simple but powerful search option gives you a detailed view of all the settings related to your search term. Here, you can also filter the settings further based on the setting's state: whether it is Enabled, Disabled, or Not Configured. Want to narrow your search based on the path of a setting? Simply use the Path option. Once you've found the settings that need to be changed, you can adjust the configurations as needed.

How to search and edit Administrative Template settings using ADManager Plus

Using ADManager Plus, admins can easily:

1. Click on the **AD Mgmt tab**.
2. Under **GPO Management**, click **Manage GPOs**.
3. Click on **Select Domain**, then choose the domain where the required GPOs are located.
4. From the **Edit GPO Settings** window, enter the search terms related to the setting you're looking for.
5. Click on the setting you'd like to edit.
6. In the window that opens, you can **Enable, Disable, or Not Configure** the setting.
7. Make other changes, if any, in the space provided below **Options**.
8. Click **Apply** to apply the modifications made to that setting.

About ADManager Plus

ADManager Plus is a web-based Windows Active Directory management and reporting solution that helps Active Directory administrators and help desk technicians accomplish their day-to-day activities. With an intuitive, easy-to-use interface, ADManager Plus handles a variety of complex tasks and generates an exhaustive list of Active Directory reports, some of which are essential requirements to satisfy compliance audits. It also helps administrators manage and report on their Exchange Server, Office 365, and Google Apps environments, in addition to Active Directory, all from a single console.

For more information on ManageEngine ADManager Plus, visit <https://www.manageengine.com/ad-manager/>

\$ Get Quote

↓ Download

30-day trial and try this feature now.