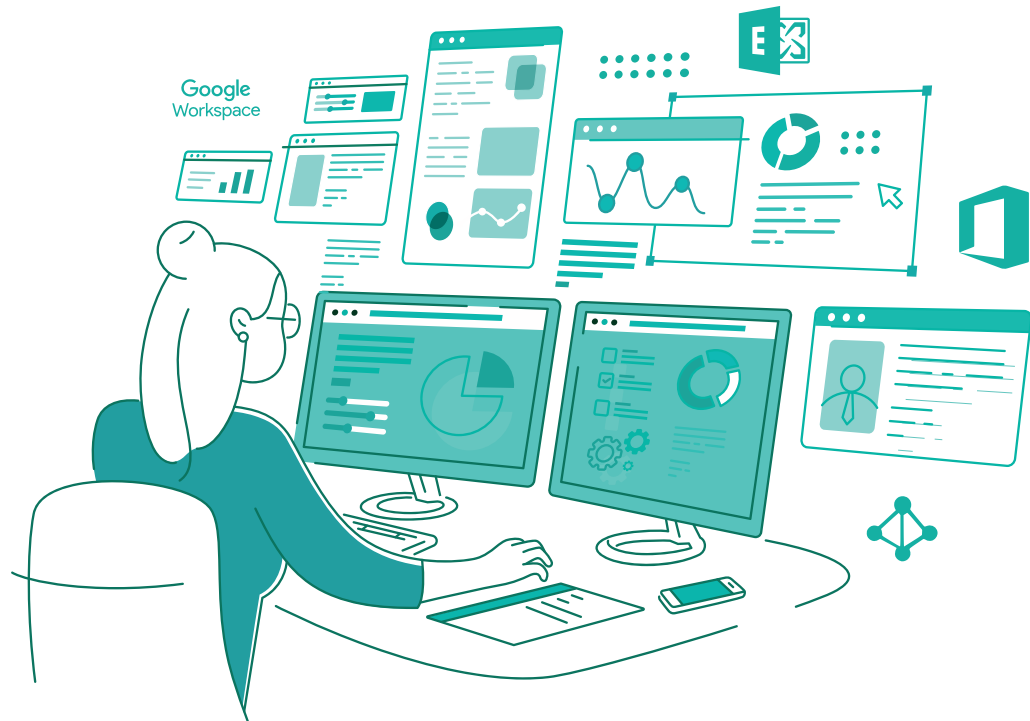


ManageEngine
ADManager Plus

An **identity** **governance and** **administration (IGA)**

solution that simplifies identity management,
ensures security, and improves compliance.



Identity management



Identity life cycle management

Manage identities across its entire life cycle, spanning provisioning to deprovisioning, and modifications with a single click across various platforms.



Orchestrate with event-driven automation

Implement event-driven orchestration to seamlessly execute tasks, like granting or revoking access based on role changes, deprovision users across enterprise applications, and more.



Automation, workflow, and delegation

Execute automation policies for streamlined identity management and approval workflows to maintain oversight of delegated tasks, and ensure security and compliance.

Hybrid AD management



Bulk management

Facilitate efficient bulk management of AD objects by utilizing CSV files and intelligent templates.



AD cleanup

Identify and remove stale objects, control cleanup with review-approval workflows, and receive real-time alerts for streamlined management.



Migration

Migrate user accounts, groups, contacts, and GPOs across inter-forest and intra-forest domains using GUI-based actions.

Risk and compliance



Access certification

Review privileges held by users with automated access certification campaigns, to reduce manual tasks, and mitigate risks.



Risk assessment

Gain insights into your AD and Microsoft 365's security posture by assessing threat indicators, determine risk scores, and proactively manage risks through remediation measures.



Over 200 predefined reports

Access over 200 reports to gain insights into your IT environment, and to identify dormant accounts, expired passwords, privileged accounts, compliance requirements, and more.



Backup and recovery

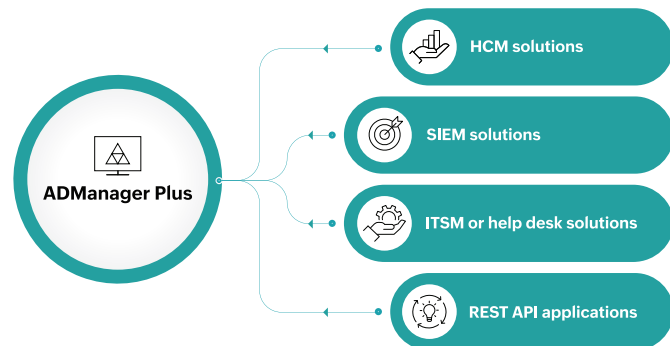
Safeguard your data with seamless backup, restoration, and archiving of Google Workspace assets, AD, and Azure AD objects without restarting domain controllers.

Integrations



Application integrations

Enhance business efficiency to minimize the costs by integrating with HCM, ITSM, SIEM, and any enterprise application that supports REST API.



3 Reasons to choose ADManagerPlus



Quick deployment

No intricate deployment process involved. Start managing identities in your AD and Microsoft 365 environment within minutes.



Licensing model

ADManager Plus license model is based on the number of domains and help desk technicians. Choose between the Standard or Professional edition, along with optional add-ons, and pay only for what you choose.



Mobile apps

Effortlessly manage identities, file permissions, GPOs and much more while on the go with fully loaded Android and iOS mobile apps.



**Recognized by
Gartner Peer Insights™**
Customers' Choice 2023 in
Identity Governance and
Administration.

Get in touch with us!



To learn more, visit
www.manageengine.com/products/ad-manager/



Write to us at
support@admanagerplus.com



See ADManager Plus in action at
demo.admanagerplus.com



Toll-free numbers
US: +1 844 245 1108
UK: 0800 028 6590
AUS: +1 800 631 268
CN: +86 400 660 8680
Intl: +1 925 924 9500



Direct dial number
+1-408-916-9393

Scan this QR code to
schedule a personalized demo

