

# Solving the top Active Directory challenges of educational institutions

Educational institutions rely on Active Directory (AD) for managing students' accounts and file share permissions. New students join each academic year, existing students enroll in new courses, and the graduate class becomes alumni. All of this account provisioning, management, and deprovisioning happens in a tight time frame. IT admins have to grant both new and existing students access to the right faculty and courses so they can access their course material, submit assignments, and more. Managing students' accounts and permissions manually is extremely inefficient, leaving a lot of room for improvement.

## Why is the beginning of the academic year a nightmare for AD administrators?

When the school year starts, AD admins have to perform a number of tasks to manage accounts and permissions for new students, existing students, and the graduate class.

### For new students:

- Create Active Directory accounts.
- Grant permission to specific shares on file servers and configure group memberships to access course files.
- Create an Office 365 or G Suite account for new students, if necessary.

### For existing students:

- Reset passwords for all students returning after a term break.
- Disable accounts of students who are not continuing their studies.
- Modify file server permissions, group memberships, and contact attributes so students can access year and course-based material

### For the graduate class:

- Delete recent graduates' Active Directory and associated accounts.

### Apart from these tasks, IT admins have to perform a handful of year-round AD operations as well:

- Reset students' passwords.
- Unlock students' accounts.

# How ADManager Plus can lighten the burden of IT administrators

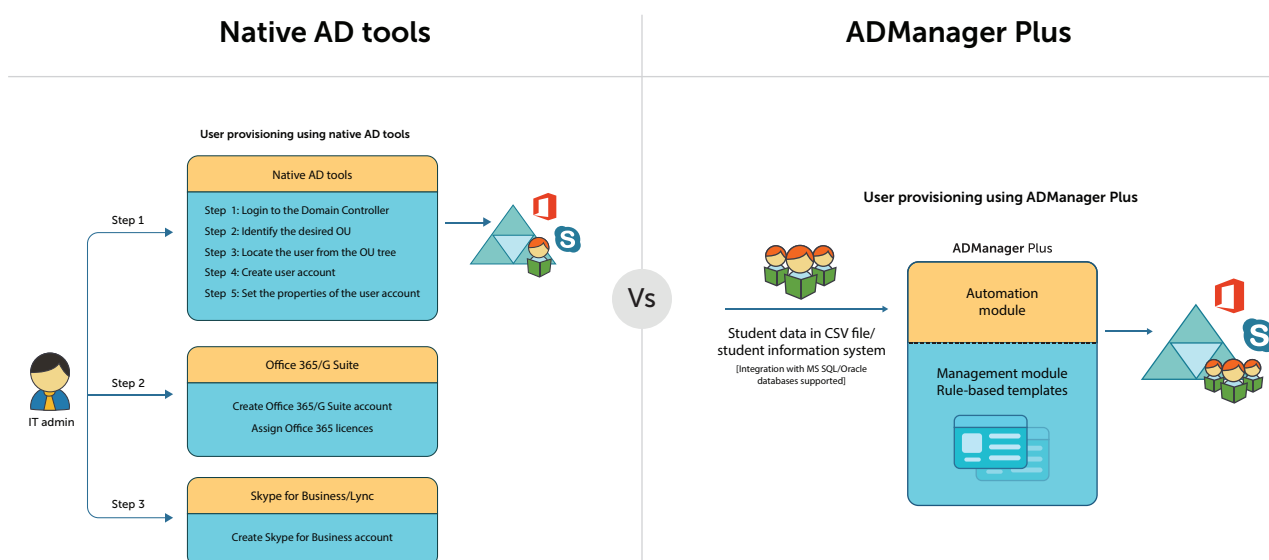
ADManager Plus, our Active Directory management solution, offers automation and many other features to help IT admins at educational institutions tackle all their AD management tasks. With ADManager Plus, admins can:

1. Automatically provision accounts for new students.
2. Automatically modify the accounts of existing students (e.g. their permissions and group memberships) using rule-based templates based on the year or course change.
3. Clean up the accounts of the graduate class.
4. Perform year-around AD management tasks in bulk right from ADManager Plus' prebuilt reports.

## 1. Automatically provision accounts for new students

The beginning of the school year brings forth a whole new batch of students and a flurry of activity for IT administrators. ADManager Plus helps admins tackle the new year by:

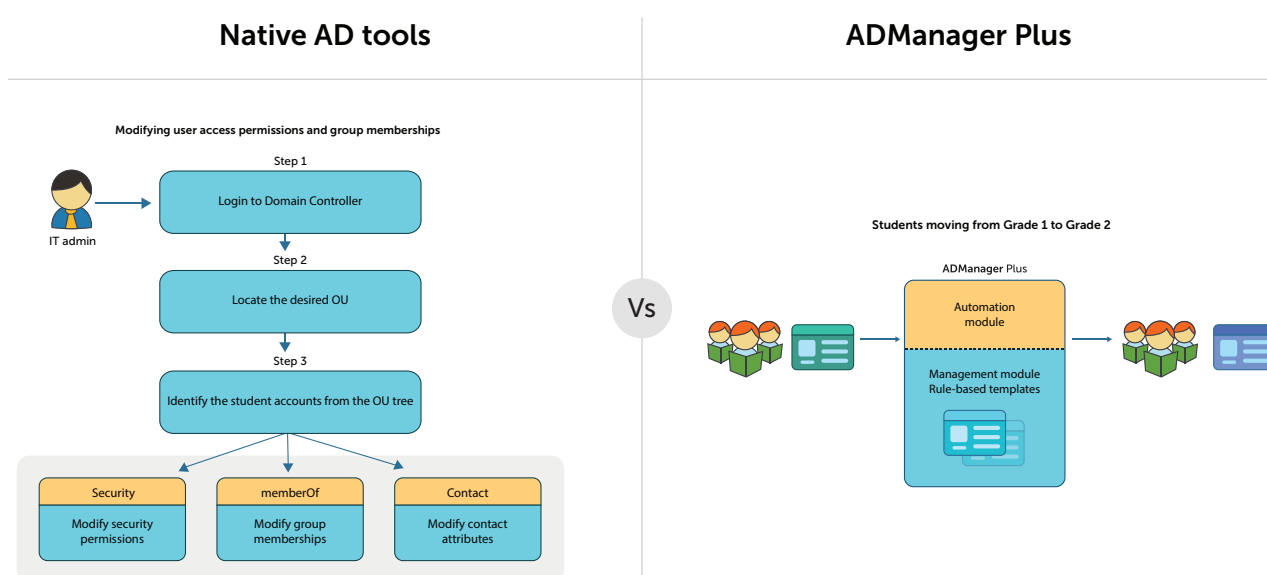
- Auto-creating accounts for students in AD, Office 365, and Skype for Business using CSV files and intelligent user creation templates.
- Sending reports or notifying involved stakeholders via SMS or email when student accounts are created at the beginning of the term.



## 2. Automatically modify existing students' accounts using rule-based templates

IT admins have to modify students' access to file servers, as well as their group memberships, based on which courses a student has enrolled in and what year they belong to. ADManager Plus offers grade-based and year-based templates so admins can modify existing students' records in bulk. These templates let admins modify:

- Group memberships, which give students access to relevant resources.
- Share folder permissions, which provide access to course materials.
- Attributes such as grades and tutors.

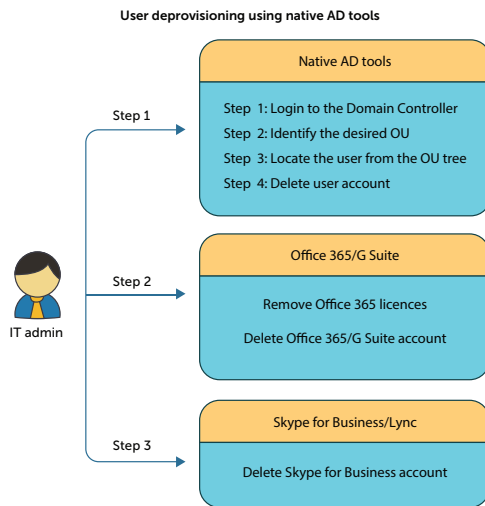


## 3. Clean up the accounts of the graduate class

Once a student graduates, their Active Directory account needs to be properly deprovisioned. ADManager Plus allows admins to automatically deprovision recent graduates' Active Directory accounts. Once admins have put a delete and disable policy in place, ADManager Plus will perform the following steps automatically:

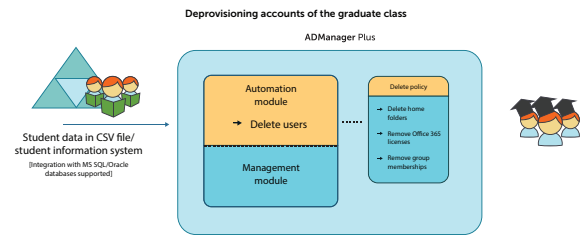
- Remove all group memberships from recent graduates' accounts.
- Delete those students' home folders.
- Delete their Office 365 or G Suite accounts and licenses.

## Native AD tools



## ADManager Plus

Vs

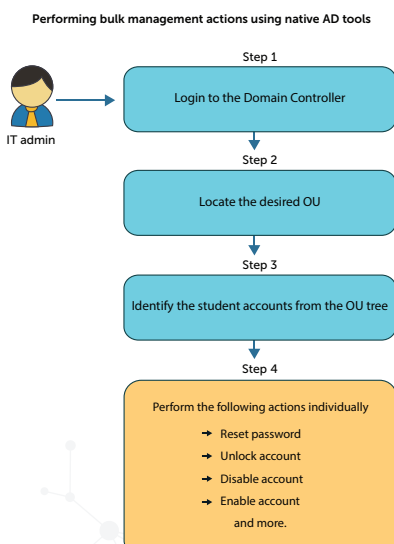


## 4. Perform year-round AD management tasks in bulk right from predefined reports

ADManager Plus offers an exhaustive list of bulk modification actions that can be performed any time during the school year. Using ADManager Plus' built-in library of reports, admins can:

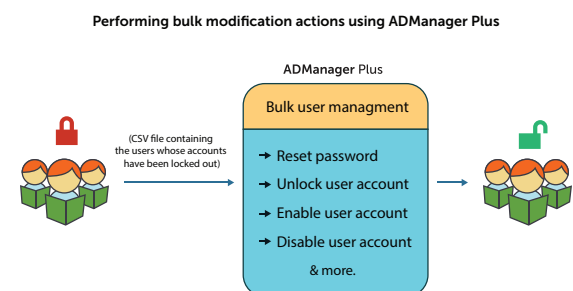
- Reset passwords for the students whose passwords have expired, or those who have forgotten their passwords.
- Unlock students' accounts.
- Identify inactive users and disable their accounts.
- Enable the accounts of students who are rejoining after a break.

## Native AD tools



## ADManager Plus

Vs



## Other highlights

Apart from simplifying Active Directory tasks for IT administrators in educational institutions, ADManager Plus offers a host of features which will cater to any organization's needs:

- Hands-free creation, modification, and deletion of accounts in Active Directory whenever records are added, modified, or deleted in applications that use an MS SQL or Oracle database.
- On-the-fly management from reports on inactive or locked-out AD user accounts, Office 365 licenses, users' last logon times, and more.
- Secure AD task delegation.
- Built-in report scheduler for automatically generating the necessary AD reports at specified times and emailing them to multiple users in different formats (e.g. XLS, PDF, HTML, or CSV).
- Ticket-based mechanism to monitor and streamline AD operations using a customizable, multi-level workflow.
- Integrations with help desk tools such as ServiceDesk Plus and ServiceNow to perform AD tasks right from the service desk.
- iOS and Android apps for on-the-go user account management.

## ManageEngine ADManager Plus

ManageEngine ADManager Plus is a web-based Windows AD management and reporting solution that helps AD administrators and help desk technicians accomplish their day-to-day activities. With an intuitive, easy-to-use interface, ADManager Plus handles a variety of complex tasks and generates an exhaustive list of AD reports, some of which are essential requirements to satisfy compliance audits. It also helps administrators manage and report on their Exchange Server, Office 365, and Google Apps environments, in addition to AD, all from a single console. For more information about ADManager Plus, visit [manageengine.com/ad-manager](https://manageengine.com/ad-manager).

\$ Get Quote

↓ Download