

Busted: Three Identity management myths

Mark

Mark is an old-school AD administrator that uses native Active Directory tools and PowerShell. However, he finds that the simplest of tasks seem to be taking large chunks of his time.

Sarah

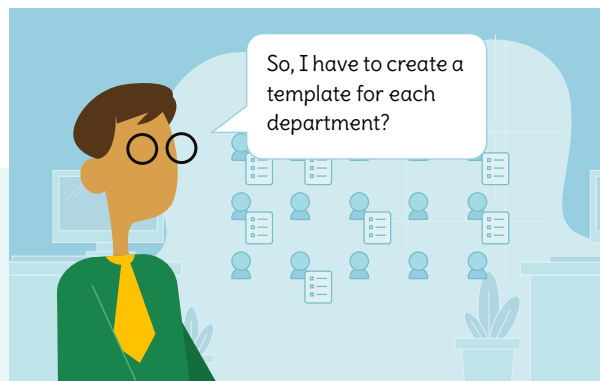
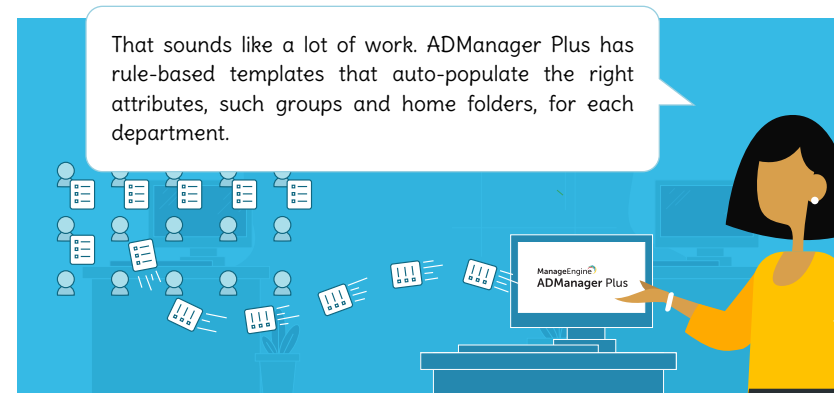
Sarah claims to have struck gold with an AD management solution.



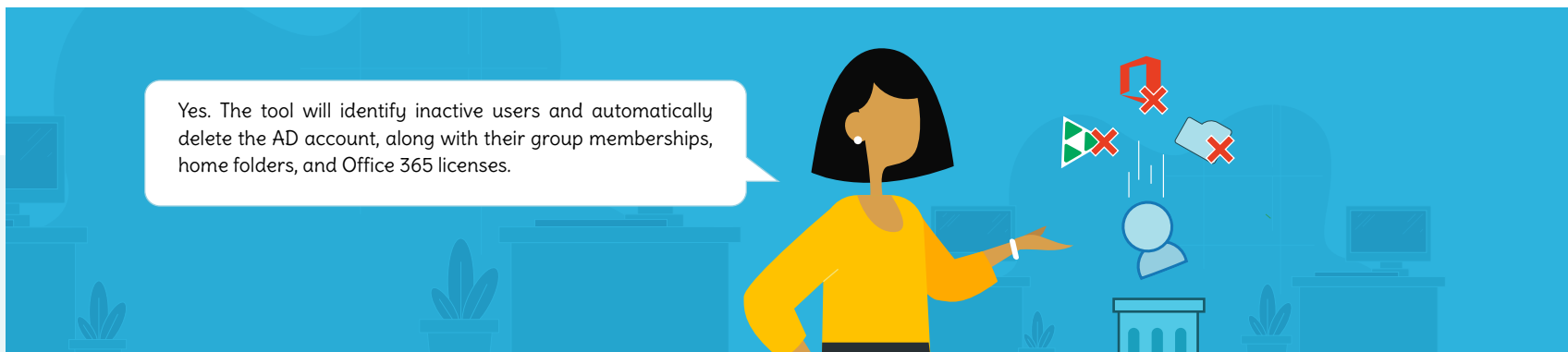
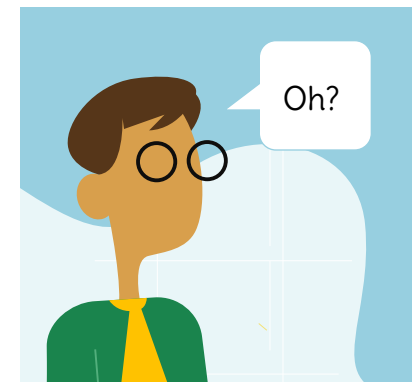
Myth #1 User onboarding takes a long time.



Myth #2 Setting up user access and privileges is time-consuming.



Myth #3 Deprovisioning can be scary.



On top of all that, ADManager Plus sends me real-time email and SMS alerts every time an action is carried out. Plus, with the help of audit reports, I can get a complete audit trail of all the AD actions performed by technicians.

That's great! I'm sold.



ManageEngine
ADManager Plus

ManageEngine ADManager Plus is a web-based Windows Active Directory management and reporting solution that helps Active Directory administrators and help desk technicians accomplish their day-to-day activities. With an intuitive, easy-to-use interface, ADManager Plus handles a variety of complex tasks, like AD object backup and recovery, and generates an exhaustive list of Active Directory reports, many of which are essential requirements for satisfying compliance audits. It also helps administrators manage and report on their Exchange Server, Office 365, G Suite, and Active Directory environments—all from a single console.

\$ [Get Quote](#)

↓ [Download](#)