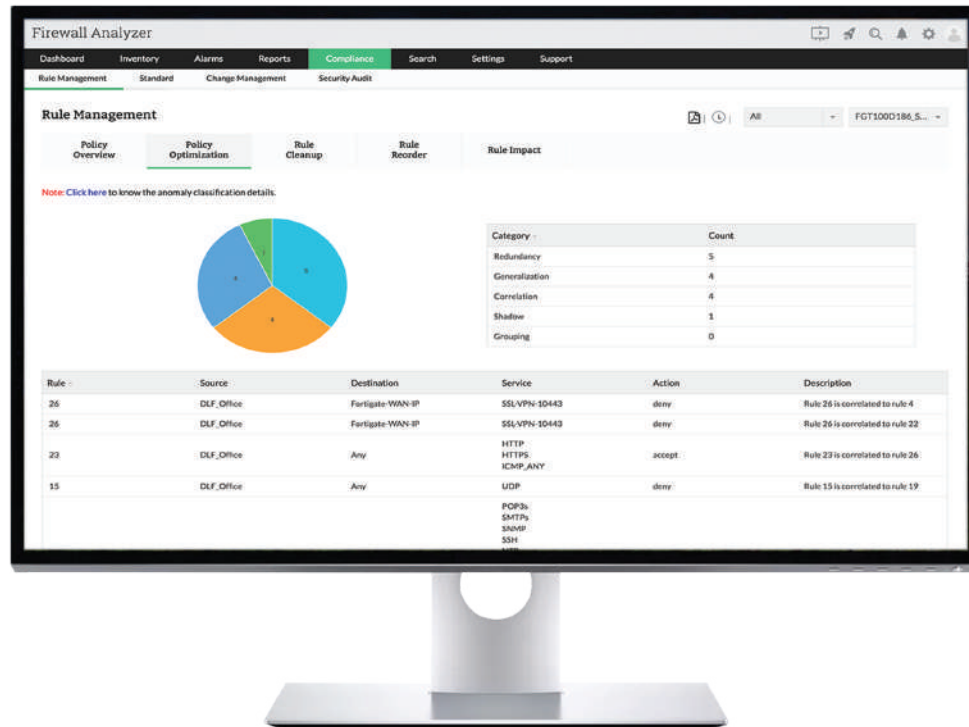


## Firewall Analyzer - Analyze your firewall policy and secure your network.



Firewall Analyzer is a policy analysis and configuration reporting software. It offers CLI-based configuration monitoring and it supports Telnet, SSH, and SCP protocol for security and traffic analysis. It also helps security admins track policy changes, optimize firewall performance and maintain compliance standards.

### Firewall Analyzer at a glance

- Provides analysis of firewall policies and rules
- Suggests firewall rule optimization
- Maintains a log of configuration changes
- Performs periodic security audits
- Monitors employee internet usage
- Alerts security events in real-time
- Displays the current security status of firewalls
- Performs regular audit compliance checks
- Monitors and alerts when bandwidth is exceeded
- Collects, consolidates, and analyzes firewall logs

### Firewall Analyzer supports more than 50 vendors

Check Point	Paloalto	Cisco	Fortinet	Juniper	Sonicwall
WatchGuard	Huawei	pfSense	Cyberoam	Sophos	and more...

### Firewall Analyzer technology partners



# Feature Highlights

## Firewall policy analysis

Analyze the efficiency of your firewall rules. Get a detailed report on all denied, allowed, inbound, outbound, and inactive rules. Detect and record redundancy, generalization, correlation, shadow, and grouping anomalies in your firewall. Determine if a new rule can impact the existing rule set negatively. Gain insight on how to improve performance by changing the rule order.

## Firewall compliance and auditing

Automate firewall audit reports and ensure continuous compliance. Get out-of-the-box reports on regulatory mandates such as PCI-DSS, ISO 27001, NIST, SANS, and NERC-CIP. Analyze the impact and severity of vulnerabilities with security audit reports.

## Out-of-the-box reports

Firewall Analyzer generates detailed reports on traffic, protocol usage, web usage, mail usage, FTP usage, Telnet usage, streaming & chat, event summary, VPN, firewall rules, change management, intranet, internet, security, attack, spam, protocol trend, traffic trend, event trend, VPN trend, inbound & outbound traffic.

## Configuration monitoring

View the complete trail of all changes applied to your firewall configurations. Find out who made what changes, when, and why. Get real-time alerts on your mobile phone when changes happen. Ensure that all the configurations and subsequent changes made in your firewall device are captured periodically and stored in the database.

## Security analysis

Identify security attacks, viruses, and other anomalies in your network. Perform forensic analysis to pinpoint threats. Know which viruses are active on your network, including the hosts that are affected. Use the advanced search capabilities to effortlessly mine for security incidents in the raw firewall logs.

## User activity and bandwidth monitoring

Keep track of internal threats by analyzing and identifying the users responsible, the websites visited, and the websites which exposed the network to attacks.

## Firewall Analyzer is available in 3 editions

### Standard

Starts at **\$395**

- Supports up to 60 Devices
- Multi-vendor security devices support
- Off-the-shelf monitoring for virtual firewalls
- Proxy servers, & VPN devices
- Network Traffic Analysis
- Network Security Reporting
- Alert Management
- Forensic Analysis

### Professional

Starts at **\$595**

- Supports up to 60 devices
- All features of Standard edition +
- Firewall rule management
- Configuration change management
- Employee internet activity reports
- Firewall security audit reports
- Web-application usage reports
- Firewall connection diagnosis
- Advanced alert management
- AD & RADIUS user authentication

### Enterprise

Starts at **\$8395**

- Supports up to 1200 devices
- All features of Professional edition +
- Monitors multi-geographical locations
- Site specific reports
- Web-client rebranding
- Client & user specific views

## Minimum System Requirements

**CPU:** 1GHz Pentium Dual Core processor or equivalent

**RAM Size:** 1 GB of RAM

**HardDrive:** 1 GB of disk space

### Operating System

- Windows: 8, 7, NT, 2000, XP, Vista, 2000 Server, 2003 Server, 2008 Server, 2012 Server, 2016 Server
- Linux - Ubuntu, Fedora, OpenSUSE, CentOS, Red Hat RHEL, Mandriva, Debian, VMware

### Web Browsers:

Internet Explorer 8 and later, Firefox 4 and later, Chrome 8 and later

### Database:

PostgreSQL, MS SQL 2000, MS SQL 2005, MS SQL 2008, MS SQL 2012

## Our Customers



**Download 30-day free trial**