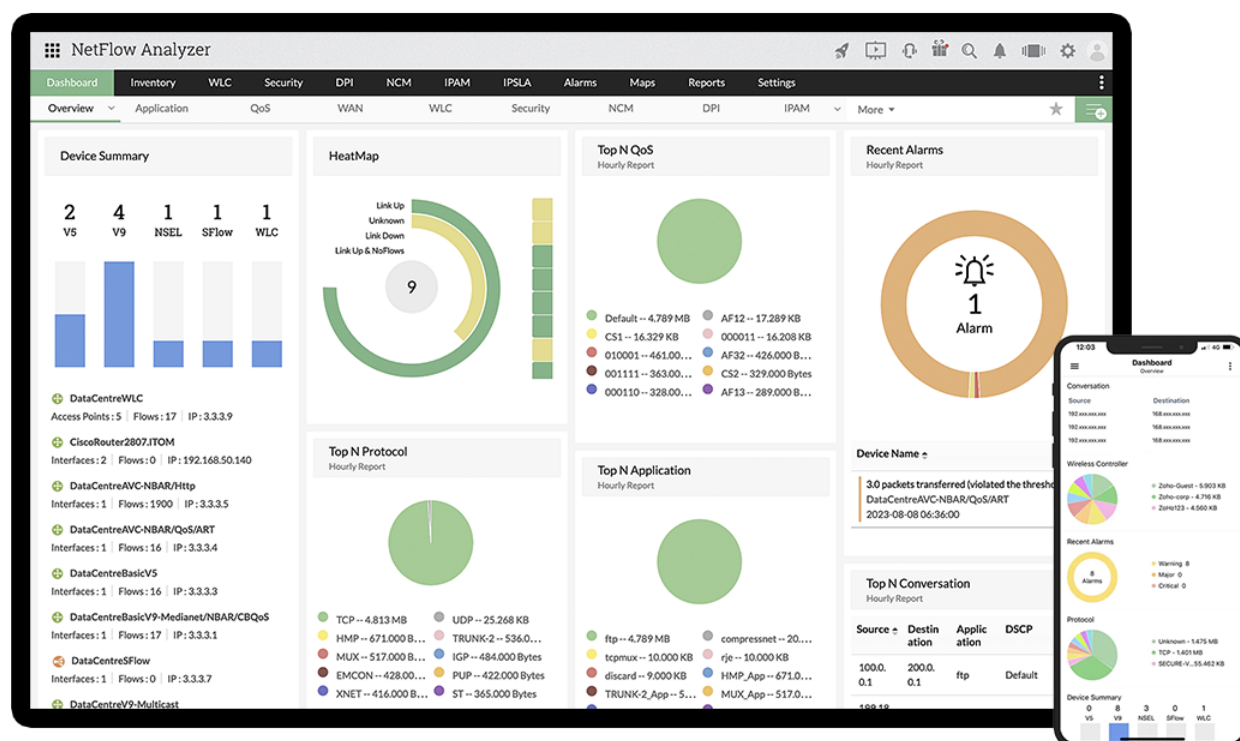


DATASHEET

NetFlow Analyzer

ManageEngine NetFlow Analyzer is a holistic network traffic analytics tool that leverages flow technologies to provide real-time visibility into your network bandwidth performance. It helps you identify network anomalies and troubleshoot issues faster for better productivity. Granularity reports are generated in just one minute to ensure you can efficiently obtain interface-level details about traffic patterns and device performance.



Features

All-inclusive bandwidth monitoring

Monitor network bandwidth, traffic patterns and track network anomalies to gain real-time insights and alerts, and fix issues before they impact end users.

Multi-vendor support and flow technology

Collect and analyze flows from major devices and vendors like Cisco, Juniper, Hewlett-Packard and report all major flow formats like NetFlow, sFlow, cFlow, and J-Flow.

Generate and deliver customized reports

With customizable reports, receive alerts about top devices, interfaces, interface groups, and IP groups sorted by speed, volume, utilization and other criteria based on the user's requirements.

Boost security and proactively detect issues

NetFlow Analyzer's Security Analytics uses machine learning and the MITRE ATT&CK framework to detect hidden threats. By connecting harmless-looking activities, it reveals real attacks, prioritizes events, and reduces noise with adaptive learning.

Interactive and customizable dashboards

Convert data to information with ease. Easily gather traffic details most relevant to your needs. View dashboards that monitor and display metrics for interfaces IN and OUT.

Application level QoS shaping

With QoS bandwidth shaping, edit or apply QoS policies to mission critical applications that adds the required flexibility for better bandwidth management.

Monitor VoIP using Cisco IPSLA and Netflow

Monitor VoIP to maintain the quality of voice communications and ensure threshold values are not exceeded for jitter, latency, and packet loss.

Monitor your network on the go

With the NetFlow Analyzer mobile application, diagnose and assess issues quickly from anywhere, anytime. Monitor your network traffic in real time without having to be confined to your desk.

Set-up threshold based alerts

Create and manage thresholds based on utilization, volume, and frequency with alert profiles and stay ahead of monitoring challenges with timely updates.

Failover-Standby engine

Failover, an alternative monitoring method, ensures there's visibility into your network, and that it's monitored even when the primary monitoring setup goes down. With this feature, you can configure a secondary monitoring instance on a separate server.

Cisco CBQoS monitoring

Validate the effectiveness of your QoS policies using Cisco class-based quality of service (CBQoS) reports utilizing NetFlow Analyzer so you can prioritize your network traffic accordingly.

Site-to-site monitoring

View site-to-site traffic patterns in your network. Allocate your bandwidth appropriately.

Distributed monitoring

Monitor globally distributed networks from a single console with architecture that enables your network to scale as your network grows.

WLC Monitoring

Monitor WLC controllers for bandwidth related statistics, and drill down further to view reports on WLAN controllers, SSIDs, access points, and QoS.

Network Pattern Analysis

Automate and simplify network anomaly detection, configuring threshold values for critical performance monitors, and traffic management with the ML and AI based Pattern Analysis.

Add-ons & Plug-ins

Cisco IPSLA monitoring

Monitor critical factors affecting VoIP, video performance, and ensure best-class service levels. Ensure seamless WAN connectivity through WAN round trip time monitoring.

ManageEngine Network Configuration Manager

Manage all the configuration changes in real time on your network devices with the network change, configuration and compliance management resource that saves you time by automating repetitive tasks. Automation also eliminates errors introduced by human entries or oversights.

ManageEngine Application Manager

Proactively monitor your business-critical Application Manager services and applications from your network traffic analysis tool. This solution ensures easy and efficient management and monitoring of IT resources, and detects problems such as service outages and response time bottlenecks.

IP address management

Manage IP addresses and switch ports better with the ManageEngine OpUtils add-on.

Network packet sensor

Carry out server traffic monitoring and bandwidth consumption of applications, source IPs, destination IPs, conversations, etc.

Monitor your network and bandwidth speed with NetSpeed Tracker

NetSpeed Tracker is an agent installation for NetFlow Analyzer that evaluates and tracks the internet speed provided by an ISP. In particular, it monitors the upload and download volume of data at different time intervals and provides insights into jitter and latency issues. conversations, etc.

NetFlow Generator

NetFlow Generator passively captures and converts network packets into NetFlow packets to help you monitor devices that don't support flow.

Deep packet inspection

With the DPI Engine, you can monitor server traffic and conduct packet-level inspection to track application response time and network response time.

Cloud traffic monitoring

NetFlow Analyzer's integration with Amazon for virtual private cloud (VPC) monitoring enables you to collect and track all critical performance metrics in the form of logs. This provides a comprehensive view of AWS resources and VPCs in your network.

Notification Templates and third-party integrations

You can manage and create notification templates to send bandwidth alerts through SMS, email, and PDF attachments. You can log tickets through ManageEngine ServiceDesk Plus, as well as third-party apps such as ServiceNow, Jira, and Slack. Other forms of alerting includes Run a program, Web Alarms, Syslog Profile, Trap Profile.

Webhook integration

Now, you can integrate third-party apps such MS Teams, Pagerduty, Telegram, and Webex with NetFlow Analyzer-Webhook to boost network performance and troubleshoot issues faster. The Webhook integration enables apps to transfer data smoothly without any hassles if an event occurs.

Editions

You can tailor your bandwidth monitoring requirements with NetFlow Analyzer, now available in three editions.

Standard	Professional	Enterprise
<ul style="list-style-type: none">● Real-time traffic graphs and reports● Application and protocol monitoring● Alarms and notifications● Notification templates● Custom and user specific dashboards● Grouping● Application performance management● Integration● \$3,438 (for 500 interfaces)	<ul style="list-style-type: none">● Real-time traffic graphs and reports● Application and protocol monitoring● WLC monitoring● Alarms and notifications● Notification templates● Custom and user specific dashboards● Grouping● Billing● Applications management● NetFlow Generator● Application performance management● Integration● \$245 (for 10 interfaces)	<ul style="list-style-type: none">● Real-time traffic graphs and reports● Application and Protocol monitoring● Multi-site and distributed network monitoring● Alarms and notifications● Notification templates● Custom and user specific dashboards● WLC monitoring● Grouping● Billing● NBAR and CBQoS monitoring● Advanced Security analytics module● IP SLA monitoring● Capacity planning● Deep packet inspection● IPAM and SPM● Failover● \$445 (for 10 interfaces)

System Requirements

System requirements for Standard/Professional Edition	System requirements for Enterprise Edition
<p>Processor : 2.4 GHz Quad Core Processor</p> <p>Ram Size : 4 GB</p> <p>Hard Disk : 200GB for database</p> <p>OS Windows : Windows 11 (or) Windows Server 2025/ 2022/ 2019/ 2016</p> <p>OS Linux : Ubuntu 16.04 to 24.04/ Fedora 41/ Red Hat 7 to 9.5/ Opensuse 15.6/ Debian 11 to 12.8</p> <p>Database : SQL 2022 (from build 12.8.452), 2019, 2017, 2016 NetFlow Analyzer bundled PostgreSQL</p>	<p>Processor : 2.4 GHz Quad Core Processor (Central Server) 3.2 GHz Quad Core (Collector Server)</p> <p>Ram Size : 4 GB (Central Server) 8GB (Collector Server)</p> <p>Hard Disk : 600 GB (Central Server) 1TB SATA Hard disk (Collector Server)</p> <p>OS Windows : Windows 11 (or) Windows Server 2025/ 2022/ 2019/ 2016</p> <p>OS Linux : Ubuntu 16.04 to 24.04/ Fedora 41/ Red Hat 7 to 9.5/ Opensuse 15.6/ Debian 11 to 12.8</p> <p>Database : SQL 2022 (from build 12.8.452), 2019, 2017, 2016 NetFlow Analyzer bundled PostgreSQL</p>

For detailed system requirements, click [here](#).

Customer



Partners



Telephone Number	Alternate number	Mail
US: +1 888 720 9500 US: +1-888 791 1189	Intl: +1 925 924 9500 CN: +86 400 660 8680	netflowanalyzer-support@manageengine.com
Aus: 1800 631 268 UK: 0800 028 6590	CA: +1 514 673 9946 US: +1 844 245 1099	
IN: 1800 572 6673		