



ManageEngine

Privileged Identity Management Suite

**A UNIFIED APPROACH TO
PROTECT PRIVILEGED
IDENTITIES AND CONTROL
PRIVILEGED ACCESS**



An enterprise-grade, all-inclusive suite that empowers IT administrators to manage privileged identities as well as control and monitor access to critical information systems from a simple, consolidated platform.

1 Eliminate password fatigue

Deploy a secure, centralized vault for unlimited password storage and quick access. Fight off password fatigue as privileged accounts proliferate. Identify and block unused or forgotten privileged accounts to thwart exploitation.

2 Avoid security lapses

Strengthen privileged account security with strong, unpredictable passwords. Enforce strict policies for password complexity requirements, regularly rotating passwords and SSH keys, and renewing SSL certificates on time.

3 Combat identity theft

Protect your organization's privileged identities from unauthorized access. Keep attackers at bay with multi-factor authentication, instant alerts on privileged account activity, and real-time session monitoring.

4 Mitigate insider threats

Minimize the risk of accidental or intentional insider threats using granular, role-based access controls. Provision users with time-limited access to critical information systems without sharing credentials in plain text.

5 Prevent and detect misuse

Create approval workflows for password retrieval to prevent unnecessary or unauthorized access to sensitive resources. Constantly supervise password access and privilege use with live activity feeds and comprehensive audit trails. Generate SNMP traps and send syslog messages to management systems to detect anomalies quickly.

6 Meet compliance audits

Prove compliance with privileged access control standards set by the GDPR, NIST, PCI-DSS, FISMA, HIPAA, NERC-CIP, ISO-IEC 27001, SOX, and other regulatory agencies. Leverage strong vaulting mechanisms, robust user authentication, access control and provisioning, and detailed reports—including audit-ready reports for PCI DSS, ISO/IEC 27001, and NERC-CIP.

7 Boost IT productivity

Streamline and automate password reset routines for service accounts and other privileged accounts to increase productivity. Gain uninterrupted access to the credentials of critical database resources with well-architected high-availability modules.

Take care of your organization's privileged identity management needs end to end with a comprehensive solution mindfully made to encompass a wide range of essential services, all delivered from a single, centralized console.

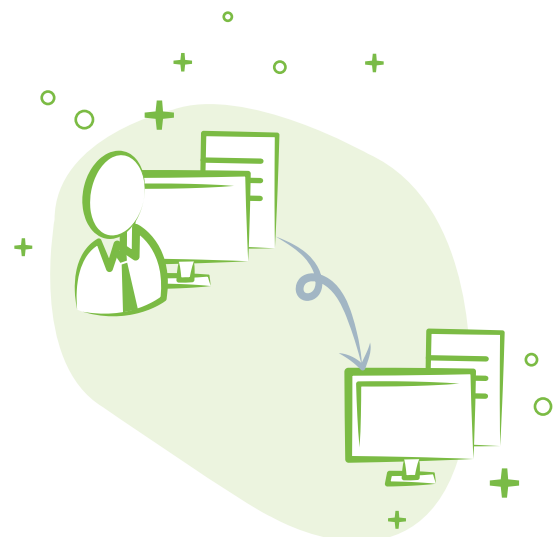


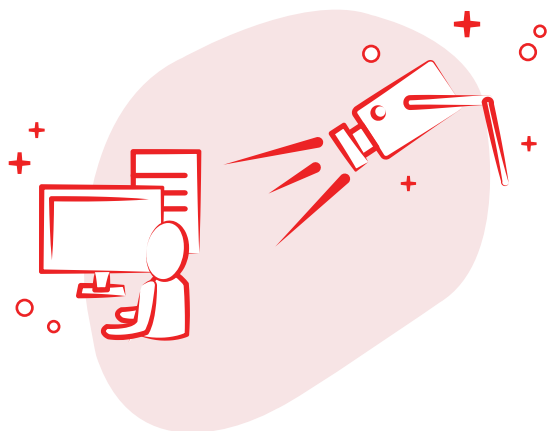
Privileged account management

Adopt a best practice approach for effective management of privileged accounts that form the security perimeter around mission-critical data servers and other IT assets in your environment—whether they use password or key-based authentication, including those of operating systems, databases, servers, applications, cloud platforms, and networking devices.

Remote access management

Establish centralized control on access pathways and define how users connect to target systems. Ensure ultimate security in all business operations with one-click login capabilities instead of sharing credentials in clear text. Tunnel connections through an encrypted channel gateway, requiring no direct connectivity between the user device and remote host.



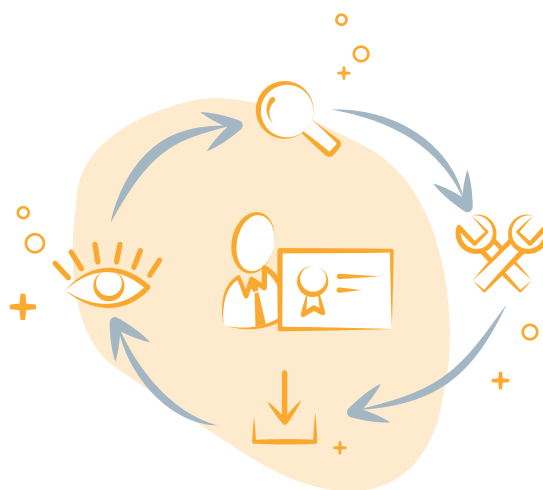


Privileged session management

Stay aware of what your users are doing with their privileged access and prevent misuse. Facilitate advanced monitoring to check whether users and third parties stay within their provisioned scope. Readily answer questions regarding the “who,” “what,” and “when” of privileged access.

SSL certificate management

Gain complete visibility and control over your SSL environment. Stay away from the risks of certificate expiration oversights, obsolete hashing algorithms, and weak ciphersuites that can cost you customers’ trust. Experience a seamless, end-to-end management of certificate life cycles.



Feature overview

- **Quickly discover** passwords, SSH keys, and SSL certificates deployed across your network and securely store them in a centralized vault.
- **Securely share** passwords and SSH keys with users for a specified time frame and revoke permissions automatically.
- **Easily generate** SSH key pairs and associate them with users. Assign new, strong passwords for remote systems.
- **Completely automate** the acquisition, deployment, renewal, and revoking of SSL certificates for public domains through an integration with Let's Encrypt, the renowned open certificate authority.
- **Regularly rotate** passwords and key pairs using strict policy enforcement. Establish a robust password management routine for service accounts.
- **Eliminate hard-coded credentials** in configuration files and scripts with secure APIs for application-to-application and application-to-database password management.
- **Import** certificates mapped to user accounts in your Active Directory service. Automate certificate life cycle management through integration with your in-house certificate authority.
- **Schedule** periodic scans to detect weak passwords, SSL configuration vulnerabilities, and more.
- **Launch remote connections** (RDP, SSH, and SQL) that are highly secure, reliable, and completely emulated in a single click, without revealing passwords or keys in plain text.
- **Record sessions** and archive them as video files for future reference.
- **Closely monitor** active sessions in real time, supervise user activity, and terminate sessions when suspicious activity is detected.
- **Continuously track** all user operations with extensive audit logging and live activity feeds.
- **Seamlessly integrate** with Active Directory/LDAP-based services, enterprise ticketing systems, SIEM tools, syslog servers, and SAML 2.0 service providers.

About us

As the IT management division of Zoho Corporation, ManageEngine prioritizes flexible solutions that work for all businesses, regardless of size or budget. ManageEngine crafts comprehensive IT management software with a focus on making your job easier. Our 90+ products and free tools cover everything your IT needs, at prices you can afford. From network and device management to security and service desk software, we're bringing IT together for an integrated, overarching approach to optimize your IT.

A background network diagram consisting of numerous grey circular nodes of varying sizes connected by thin grey lines, creating a complex web-like structure.

180,000+
companies around
the world trust

ManageEngine 

The ManageEngine logo features a stylized 'e' composed of several overlapping, curved segments in blue, green, yellow, and red.

manageengine.com/pim

For questions: sales@manageengine.com
Toll-free number: +1 888 720 9500



Zoho Corporation
4141 Hacienda Drive
Pleasanton, CA 94588
USA
Phone: +1-925-924-9500