

Govern

privileges

Regulate

access

Annihilate

risks

A multi-pronged approach to continuous privileged access security.



**Credential vaulting
and randomization**



**Role-based
access controls**



**Secure remote
access provisioning**



**Session recording
and shadowing**



**Compliance auditing
and reporting**

Broker privileged access—standing or just-in-time, to remote hosts from end user machines via secure, password-less tunnels.

Create and deploy SSH key pairs to associated endpoints. Enforce strict policies for periodic key rotation.

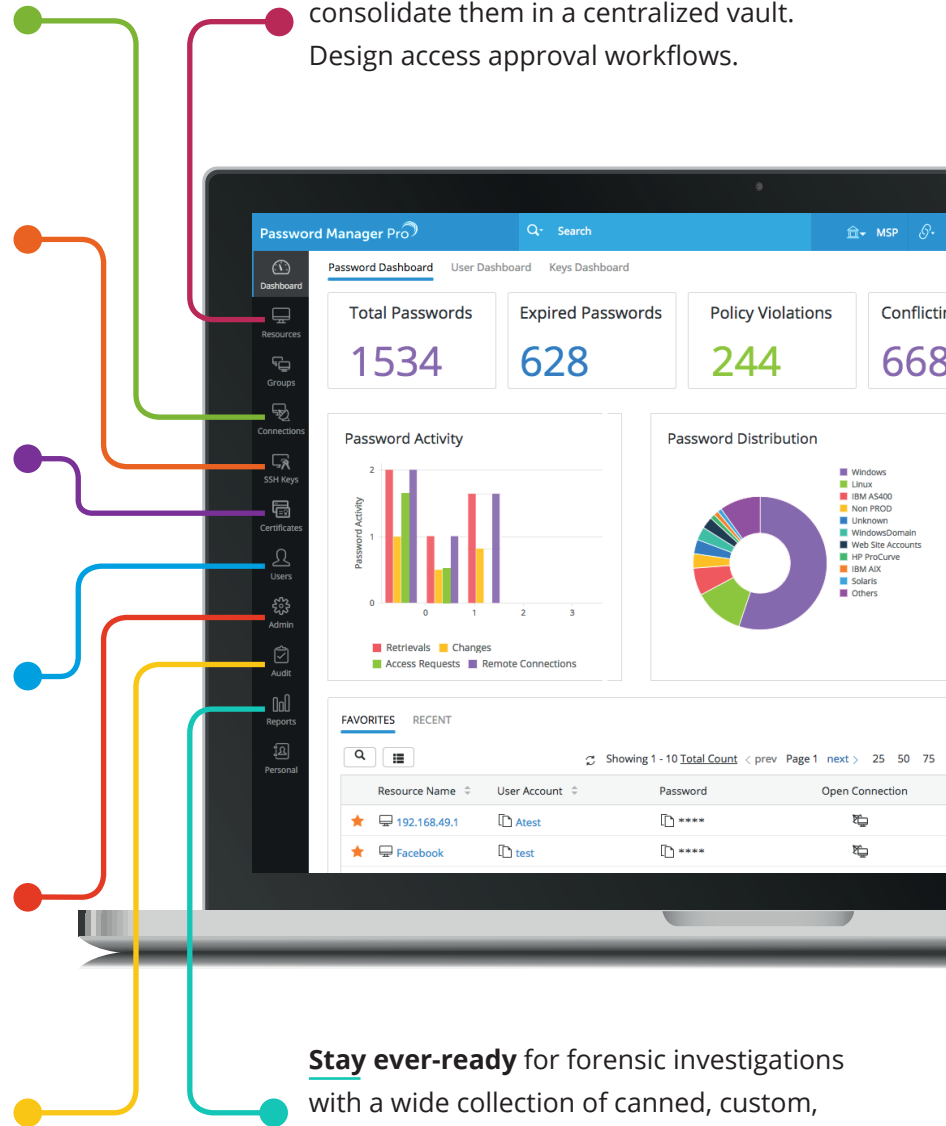
Integrate out of the box with popular certificate authorities like Let's Encrypt and MS CA to adopt SSL certificate management.

Simplify user management with AD/LDAP integration capabilities. Build custom roles for contract employees.

Set up high availability and disaster recovery for service continuity. Leverage integrations with ITSM, SIEM, and SAML services.

Extensively capture all events around privileged account operations. Generate instant alerts for desired actions.

Discover privileged accounts and consolidate them in a centralized vault. Design access approval workflows.



Stay ever-ready for forensic investigations with a wide collection of canned, custom, query and compliance reports.

Built for enterprises to empower IT security administrators.

- Single pane of glass platform
- Faster time to value
- Unlimited resource storage
- PCI DSS, GDPR, NIST, FISMA, HIPAA, and SOX compliance
- Credential rotation capabilities for hybrid IT
- Password management for DevOps pipeline
- Secure APIs for A-to-A and A-to-DB password management
- Multifactor authentication
- FIPS 140-2-compliant mode
- AES-256 encryption
- HSM integration
- Multitenancy for MSPs
- Free technical support
- Virtualization support

Try before you buy with a free, 30-day trial!

manageengine.com/passwordmanagerpro

For queries: hello@passwordmanagerpro.com
For demo: demo.passwordmanagerpro.com

ManageEngine
Password Manager Pro