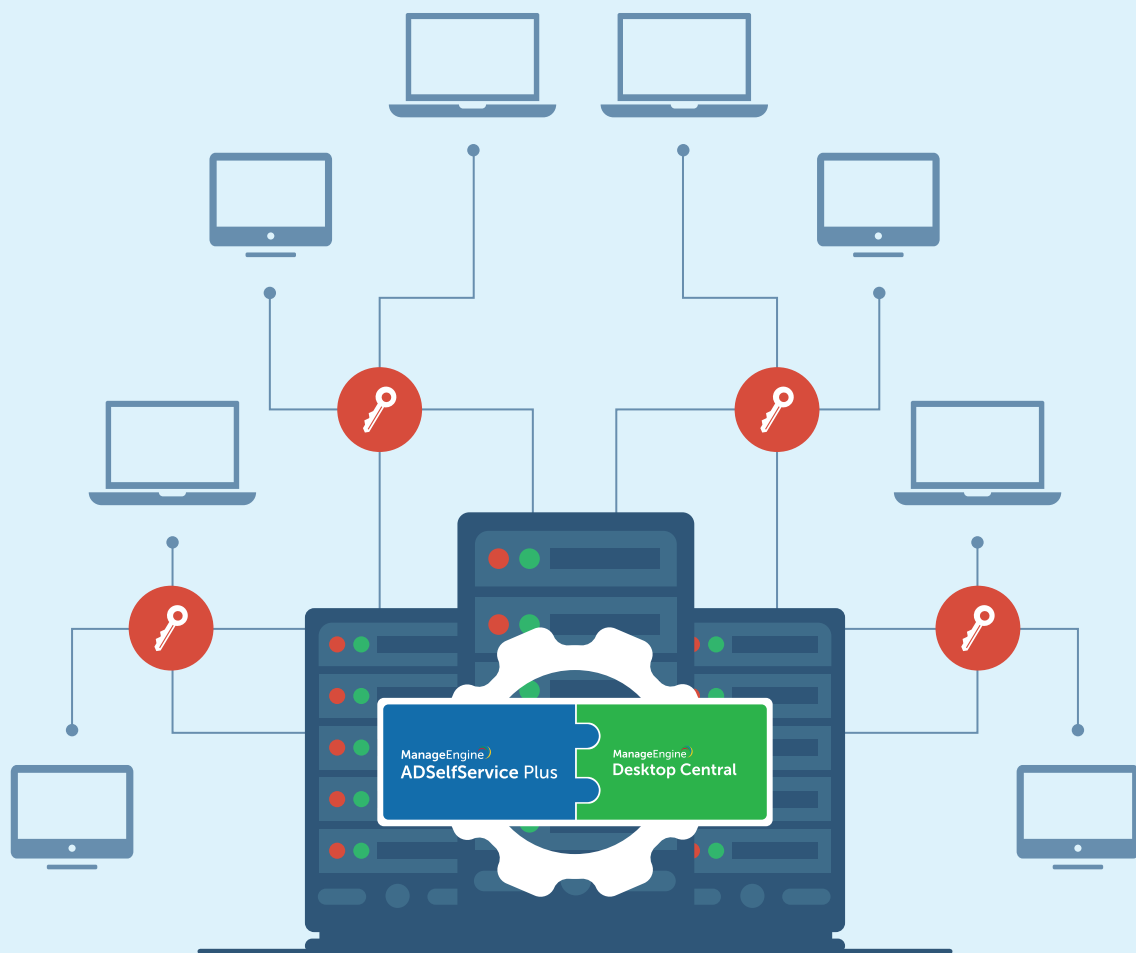


# Installing ADSelfService Plus Client software using Desktop Central





# Table of Contents

<b>i. Document summary</b>	_____	<b>1</b>
<b>ii. Two steps for installing client software</b>	_____	<b>1</b>
Step 1: Creating an MSI package	_____	1
Step 2: Deploying an MSI package	_____	4

1

## Document summary

This document will guide you through the steps involved in installing the ManageEngine ADSelfService Plus client software (GINA/Credential Provider agent) using ManageEngine Desktop Central. This document is written with the assumption that you are a system administrator with basic knowledge of Desktop Central.

2

## Two steps for installing client software

### Step 1: Creating an MSI package

- Log in to **Desktop Central** as an admin.
- Navigate to **Software Deployment > Packages > Add Package** and select **Windows** or **Mac** based on your requirements.
- Skip the **Network Share** configuration settings.
- In the Enter Package Details page, enter a **Package Name**, and click the **MSI/MSP** radio button.

Enter Package Details

Package Name\* :

Package Type :  MSI / MSP  EXE / APPX / MSIEXEC / MSU

License Type\* :

Locate installable from :  Shared Folder (Network share used within LAN)  This computer (used across multiple remote Offices)

Upload Files (Max 5 GB)

1. ADSelfServicePlusClientSoftware.msi

[.zip, .gzip, .bzip2, and .tar files will be extracted automatically.]

MSI / MSP File Name\* :

[Example : AcroRead.msi] Switches are not required for msi files.

- Select **Commercial** from the License Type drop-down.
- In the Local installable form field, click **This computer (used across multiple remote offices)**.
- Click **Add Files**. In the window that opens, select the **ADSelfServicePlusClientSoftware.msi** file located in the bin folder (by default, it's located at C:\ManageEngine\ADSelfService Plus\bin).
- Back in the Package Details page, enter an **MSI / MSP File Name**.
- In the MSI / MSP Properties for installation field, enter the following command:  
`SERVERNAME="xyz" PORTNO="9251" PROTOCOL="https"`

**Note:** In the above command, "xyz" should be the server hostname in which ADSelfService Plus is installed. You'll also need to change the PORTNO and PROTOCOL in the above command. If you want your client software to have the default layout (depicted in Figure 1), only enter the above given command; otherwise, you can customize it with the following parameters

1. **FRAMETEXT=""** (Enter an appropriate Frame text. Frame text can only be displayed on Windows XP/Windows Server 2003 and lower)
2. **BUTTONTEXT=""** (Enter an appropriate Button text)
3. **IMAGEPATH=""** (Enter the folder path of the BMP file to be used as the client software icon)
4. **WRAPPING PROVIDER=""** (Enter the GUID of your third party Credential Provider client, if any)
5. **PROD\_TITLE=""** (Enter an appropriate Product title)

**Sample code:** SERVERNAME="xyz" PORTNO="9251" PROTOCOL="https"  
FRAMETEXT="Can't log on? Click on password reset or unlock button"  
BUTTONTEXT="Reset password/unlock account"  
IMAGEPATH="C:\Users\adssp-selfservice\Desktop\Images\Product title"

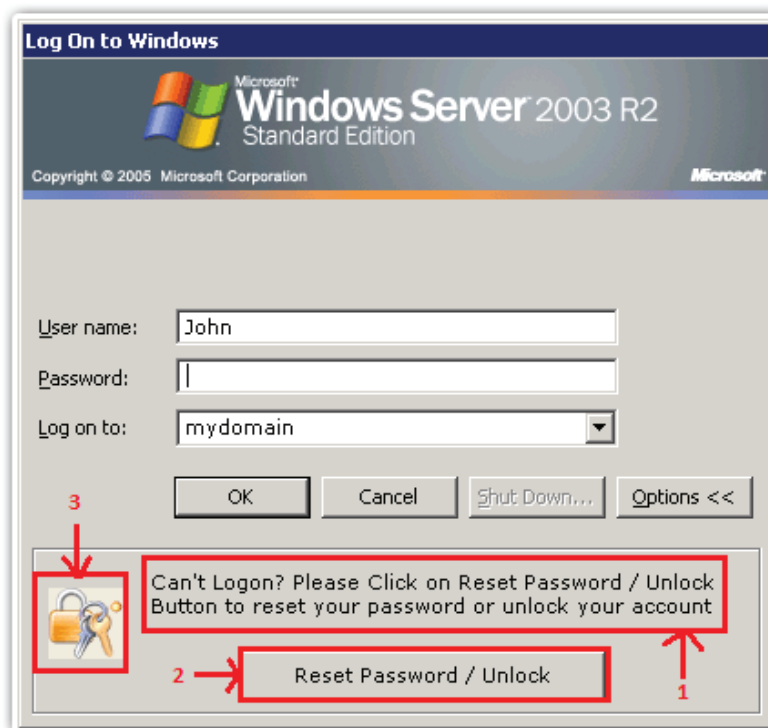


Figure 1. Frame text, button text, and icon for Windows XP/Windows Server 2003 and lower.

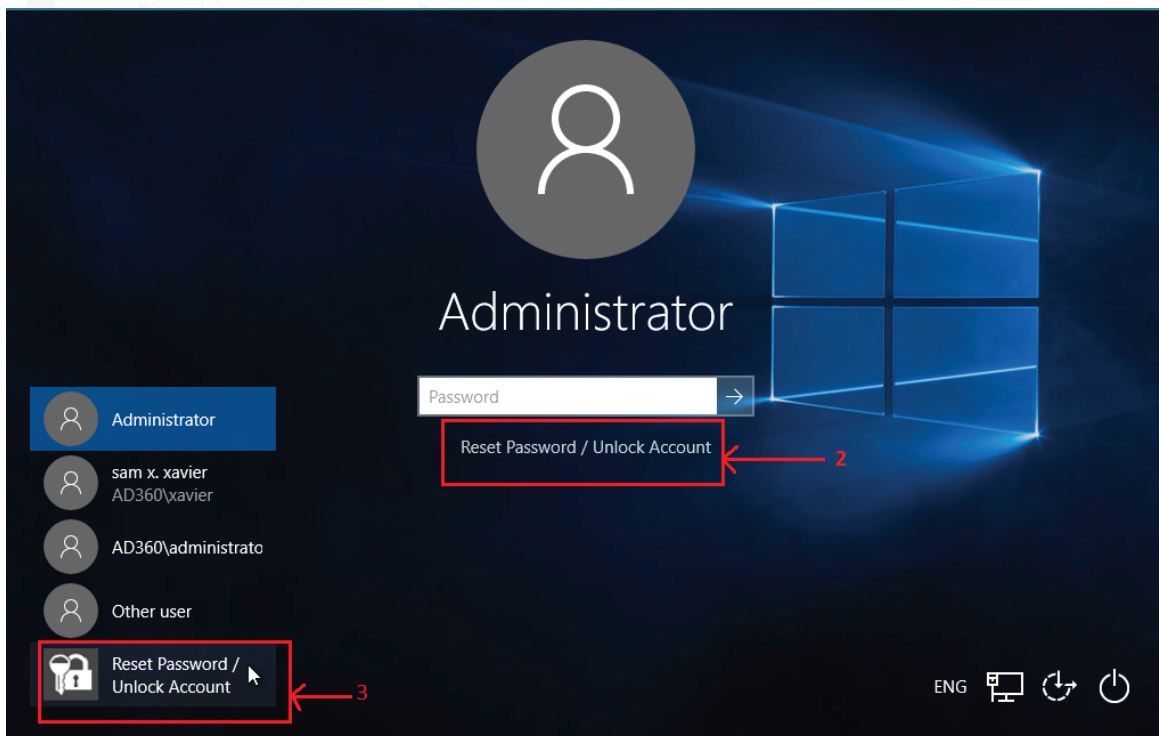


Figure 2. Button text and icon for Windows 8, Windows Server 2012, and above.

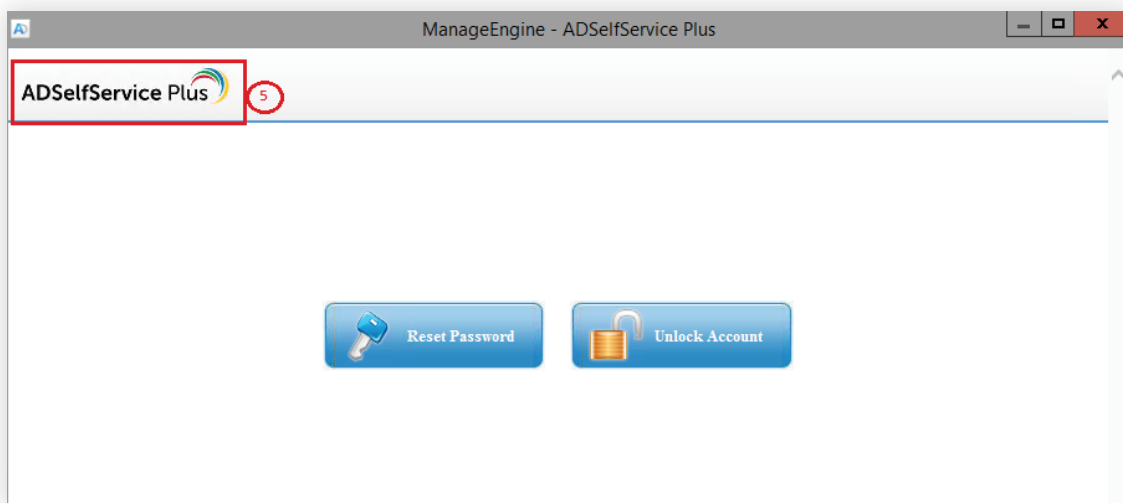
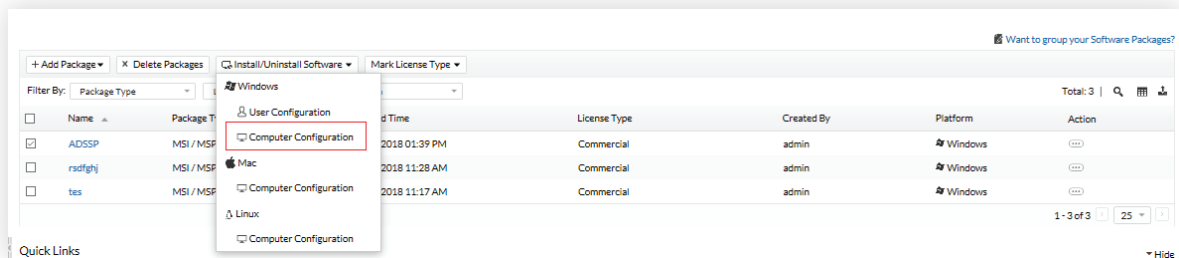


Figure 3. Product title text.

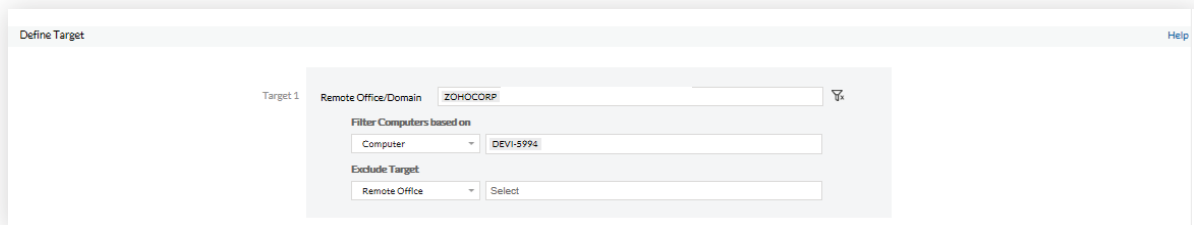
- Click **Add Package**.
- You have now created a software package that you can deploy to the computers in your domain.

## Step 2: Deploying an MSI package

- Select the **package** you have created in the Packages tab.
- Select **Computer Configuration** from the Install/Uninstall Software drop-down.



- In the Install/Uninstall Windows Software page that opens, enter a **Name**.
- In the Define Target section, select the required **domains** and **computers** to which you'd like to deploy the **MSI package**.



- Click **Deploy Immediately**.

## ManageEngine ADSelfService Plus

ADSelfService Plus is an integrated Active Directory self-service password management and single sign-on solution. It offers password self-service, password expiration reminders, a self-service directory updater, a multiplatform password synchronizer, and single sign-on for cloud applications. Use the ADSelfService Plus Android and iPhone mobile apps to facilitate self-service for end users anywhere at any time. ADSelfService Plus supports the IT help desk by reducing password reset tickets and spares end users the frustration caused by account lockouts and forgotten passwords.

For more information, please visit [www.manageengine.com/products/self-service-password](http://www.manageengine.com/products/self-service-password).

\$ Get Quote

Download