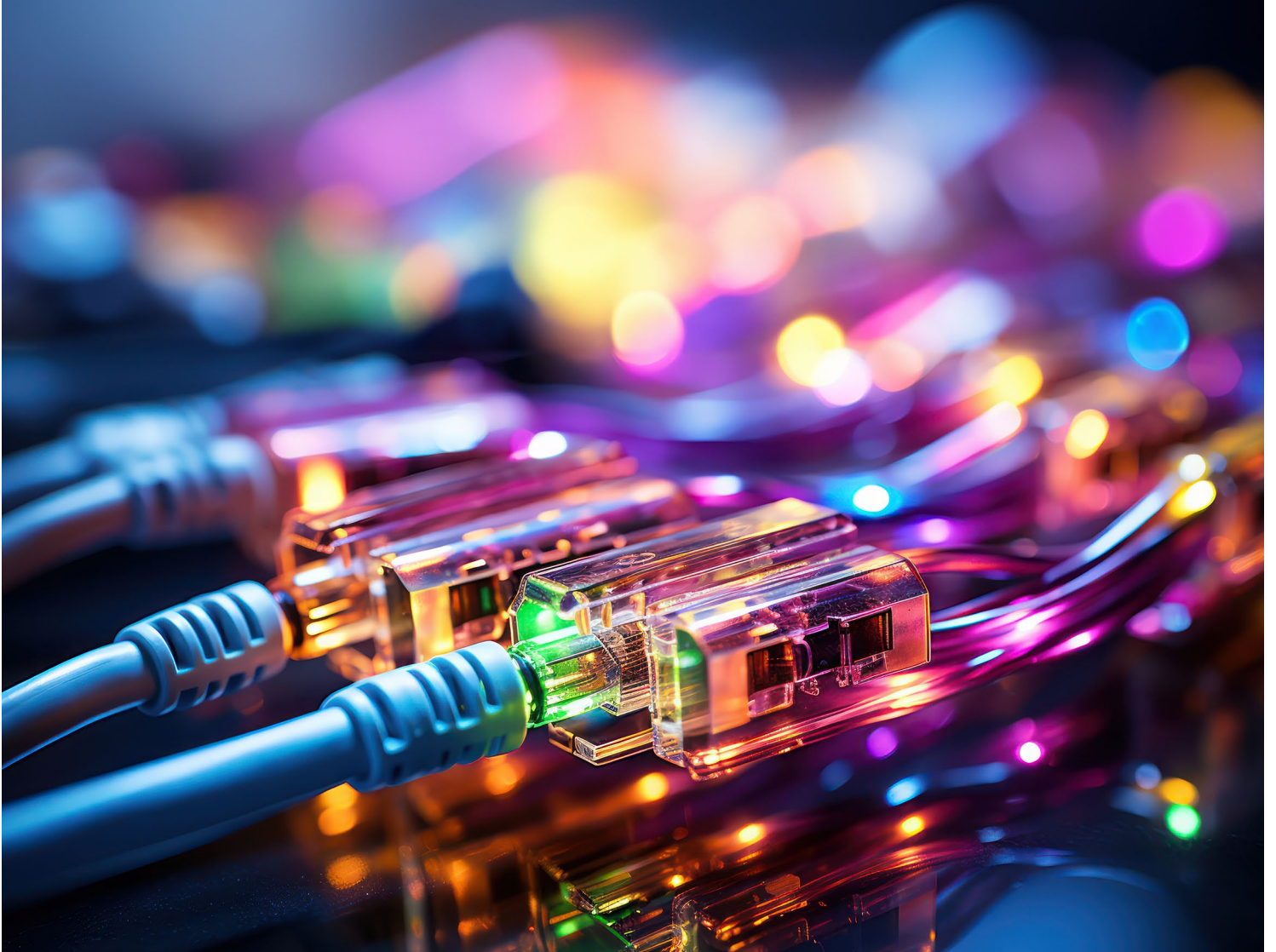


ManageEngine  
SharePoint Manager Plus

SharePoint Manager Plus

# System and port requirements



## System requirements

### Hardware requirements

The following table lists the recommended hardware requirements for ManageEngine SharePoint Manager Plus.

Hardware	Minimum	Recommended
Processor speed	2.1GHz or faster	3GHz or faster
Processor cores	6	12
RAM	10GB	20GB
Disk type	SSD	SSD
Disk space	35GB	110GB
Network card capacity	1GB/s	1GB/s
CPU architecture	64-bit	64-bit

## Software requirements

### Supported operating systems

SharePoint Manager Plus can be installed on machines running the following operating systems and versions:

- Windows 11
- Windows 10
- Windows 8 and 8.1
- Windows 7
- Windows Server 2022
- Windows Server 2019
- Windows Server 2016
- Windows Server 2012
- Windows Server 2012 R2

## Supported SharePoint platforms

SharePoint Manager Plus can manage and audit both online and on-premises SharePoint farms. Our solution supports the following SharePoint versions:

- Microsoft SharePoint 2019, 2016, 2013, 2010, and Subscription Edition
- Microsoft SharePoint Online

## Supported web browsers

SharePoint Manager Plus has been tested to support the following browsers and versions with at least a 1024x768 display resolution:

- Microsoft Edge
- Mozilla Firefox
- Google Chrome
- Internet Explorer 10 and later

## Supported databases

SharePoint Manager Plus can use either of the following databases as its back-end database:

- PostgreSQL
- Microsoft SQL Server

**Note:** PostgreSQL comes bundled with SharePoint Manager Plus and is the default database.

## .NET and PowerShell requirements

SharePoint Manager Plus requires Microsoft .NET Framework 4.8 and Windows PowerShell 5.1 to be installed in the system.

1. To check if .NET Framework is installed, open PowerShell as an administrator and enter the following command:

```
(Get-ItemProperty "HKLM:\SOFTWARE\Microsoft\NET Framework Setup\NDP\v4\Full").Version
```

Check the displayed version. If the version is below 4.8, install .NET Framework 4.8 from [here](#).

2. To check the version of PowerShell, open PowerShell and run the following command:

```
$PSVersionTable
```

If the version is below 5.1, or if PowerShell is not installed, install PowerShell 5.1 from [here](#).

## General recommendations

### VM infrastructure

- Allocate 100% of the RAM and CPU to the VM running SharePoint Manager Plus. Sharing memory and processing power with other VMs on the same host may result in RAM or CPU starvation and may negatively impact SharePoint Manager Plus' performance.

### CPU and RAM

- Server CPU utilization should be maintained below 85% to ensure better performance.
- 50% of server RAM should be kept free for off-heap utilization of Elasticsearch for optimal performance. Elasticsearch is used to store list and list item data as well as the IIS logs of SharePoint servers.

### Disk

- Disk latency greatly affects the performance of SharePoint Manager Plus. Direct-attached storage on par with an SSD with near-zero latency and high throughput is recommended.

## Port requirements

### Server ports

Hardware	Minimum	Recommended
8085 and 8086	HTTP/HTTPS	To connect to the Tomcat web server
33315	TCP	To connect to the product database
9300–9400	TCP	To connect to the Elasticsearch database

### System ports

Allow outbound connections to ports on the source server (i.e., the SharePoint Manager Plus server) and inbound connections to ports on the target server (i.e., the SharePoint server).

Port number	Protocol	Source	Destination	Port type	Service	Purpose
5985 and 5986	HTTP/HTTPS	SharePoint Manager Plus server	SharePoint server	Static	PowerShell	To establish a connection to the SharePoint server using remote PowerShell
80 and 443	HTTP/HTTPS	SharePoint Manager Plus server	Microsoft 365	Static	Microsoft 365	Required for communicating with Microsoft 365
389 and 636	TCP and UDP	SharePoint Manager Plus server	Domain controllers	Static	LDAP	To connect to Active Directory (AD)
445	TCP and UDP	SharePoint Manager Plus server	IIS server	Static	Server Message Block	To collect IIS log data
25	SMTP	SharePoint Manager Plus server	SMTP server	Static	SMTP	To send emails

## Endpoint settings

The following endpoints must be allowed by the firewall for seamless functioning of the tool.

### Azure AD general cloud

Azure AD general cloud users must ensure that the following domains are allowed by their firewalls. Azure Germany, China, and United States cloud users should refer to the respective tables.

Module	Endpoints
<b>REST API</b>	login.microsoftonline.com
	graph.windows.net
	graph.microsoft.com
	manage.office.com
	portal.office.com
	login.windows.net/common/oauth2/token
	admin.microsoft.com/fd/CommerceAPI/my-org
<b>Exchange Online</b>	outlook.office.com
	outlook.office365.com/powershell-liveid

## Azure Germany

Azure Germany cloud users must ensure that the following domains are allowed by their firewalls.

Module	Endpoints
<b>REST API</b>	login.microsoftonline.de
	graph.cloudapi.de
	graph.microsoft.de
	manage.office.de
<b>Exchange Online</b>	outlook.office.de
	outlook.office.de/powershell-liveid

## Azure China

Azure China cloud users must ensure that the following domains are allowed by their firewalls.

Module	Endpoints
REST API	login.partner.microsoftonline.cn
	graph.chinacloudapi.cn
	manage.office.cn
	portal.azure.cn
	login.partner.microsoftonline.cn/common/oauth2/token
Exchange Online	partner.outlook.cn
	partner.outlook.cn/PowerShell

## Azure United States

Azure United States cloud users must ensure that the following domains are allowed by their firewalls.

Module	Endpoints
REST API	login.microsoftonline.us
	graph.windows.net
	graph.microsoft.us
	manage.office.us
	portal.azure.us
	login.microsoftonline.us/common/oauth2/token
Exchange Online	outlook.office365.us
	outlook.office365.us/powershell-liveid

## General domains

The following general domains must be allowed through the firewall.

Domain	URLs	Purpose
*.zoho.com	<a href="https://creator.zoho.com">creator.zoho.com</a>	To install security patches and send product and health metrics periodically
	<a href="https://salesiq.zoho.com">salesiq.zoho.com</a>	Used for the <b>Live Chat</b> feature on the <b>Support</b> tab
	<a href="https://livedesk.zoho.com">livedesk.zoho.com</a>	
manageengine.com	<a href="https://pitstop.manageengine.com">https://pitstop.manageengine.com</a>	To display recent forum posts and announcements on the Support tab
	<a href="https://identitymanager.manageengine.com">https://identitymanager.manageengine.com</a>	To communicate with the Microsoft Graph API for tenant configuration
*.zohocorp.com	<a href="https://uploads.zohocorp.com">uploads.zohocorp.com</a>	To download patch files, if any
	<a href="https://bonitas.zohocorp.com/">https://bonitas.zohocorp.com/</a>	To upload log files

## Our Products

AD360 | Log360 | ADManager Plus | ADAudit Plus | ADSelfService Plus  
M365 Manager Plus | RecoveryManager Plus