

SharePoint **Online migration** guide



Table of contents

| | |
|--|---|
| Introduction | 1 |
| Migration challenges using SPMT tool | 1 |
| Challenge 1: Not having enough visibility | 2 |
| Challenge 2: Lack of automation | 3 |
| Challenge 3: Requirement of elevated privileges | 4 |
| Challenge 4: Limitations in granular migration | 5 |
| Challenge 5: Difficulty in preserving metadata | 6 |
| Challenge 6: Migration between tenants | 7 |
| Benefits of migrating using SharePoint Manager Plus | 8 |

Introduction

Organizations migrate to SharePoint Online to enjoy the benefits of increased collaboration and accessibility. Microsoft offers the SharePoint Migration Tool (SPMT) to help organizations migrate from on-premises SharePoint to SharePoint Online. This tool, however, has its own set of challenges that limit you from effectively migrating your resources.

This document will give you insight into the many challenges organizations face in migrating their environment with SPMT and how SharePoint Manager Plus helps in simplifying the process.

Migration challenges using SPMT

[Not having enough visibility](#)

It is difficult to plan a migration task without enough information into your environments.

[Lack of automation](#)

Manually migrating resources is time-consuming and disrupts your workflow.

[Requirement of elevated privileges](#)

The user requires the Global role or SharePoint admin role to be able to perform migration tasks.

[Limitations in granular migration](#)

You can't migrate only specific files without copying the entire folder.

[Difficulty in preserving metadata](#)

Mapping column values accurately requires manual effort after migration.

[Migration between tenants](#)

Lack of migration support between tenants makes collaboration harder.

CHALLENGE 1

Not having enough visibility

Without a proper understanding of your environment, it is difficult to plan for an effective migration. Having complete visibility helps in resource allocation and identifying potential challenges. While SPMT has a scan feature, it only provides you with basic information like the file size and the number of items.

How SharePoint Manager Plus helps

SharePoint Manager Plus offers visibility on every aspect of your SharePoint organization. Get information into your site collections, the content present inside them, and every item inside a list. By understanding your source environment and the target environment, you can plan your migration effectively.

| Site Collection GUID | Site Collection Name | URL | Total Sites | Total Lists | Total Document Libraries | Storage Size |
|--------------------------------------|---|---|-------------|-------------|--------------------------|--------------|
| 69c80c24-e21e-4773-a1b7-556456501b0e | alter_test | https://admpmsdn.sharepoint.com/sites/alerttest | 3 | 10 | 13 | 2.93 MB |
| f0deb089-f9fc-44dc-9766-dbcc1e96927a | AuditTestSiteCollection_Private | https://admpmsdn.sharepoint.com/sites/AuditTestSiteCollection_Private | 1 | 1 | 6 | 199.05 MB |
| 16eb9f52-b08b-4e50-8f5e-92666f39646f | eDiscovery Center | https://admpmsdn.sharepoint.com/Sites/eDiscoveryCenter | 1 | 3 | 3 | 2.88 MB |
| a3383e7f-45f0-4374-85af-378d8b8138fd | Gokul Site | https://admpmsdn.sharepoint.com/sites/Gokul | 9 | 26 | 40 | 120.37 MB |
| b7538bd9-b5d2-4330-8807-4728fde9ecba | Language Testing | https://admpmsdn.sharepoint.com/sites/languageetest | 1 | 3 | 4 | 2.04 MB |
| 4955c163-5733-420b-a857-5fef1af54548 | Mig test | https://admpmsdn.sharepoint.com/sites/migtest | 6 | 17 | 21 | 7.34 MB |
| 54accbf2-1f4f-4f55-a349-d54398b63a37 | Online audit test sitecollection rename | https://admpmsdn.sharepoint.com/sites/onlineaudit | 2 | 7 | 7 | 3.12 MB |
| c9125b18-a0b5-4352-9c92-3839c71cfc58 | PointPublishing Hub Site | https://admpmsdn.sharepoint.com/portals/hub | 6 | 10 | 15 | 3.13 MB |
| 971bd2cd-8266-44df-9eaa-b2a80a7d7167 | Rubik's Cube | https://admpmsdn.sharepoint.com/sites/rukizcube | 4 | 6 | 10 | 2.48 MB |
| 88e17673-4ccd-4731-800c-fc99742479d2 | Search Site | https://admpmsdn.sharepoint.com/search | 14 | 42 | 47 | 37.85 MB |
| b870cc1-32a0-4134-8b37- | comp | https://admpmsdn.sharepoint.com/sites/comp | 1 | 1 | 5 | 3.01 MB |

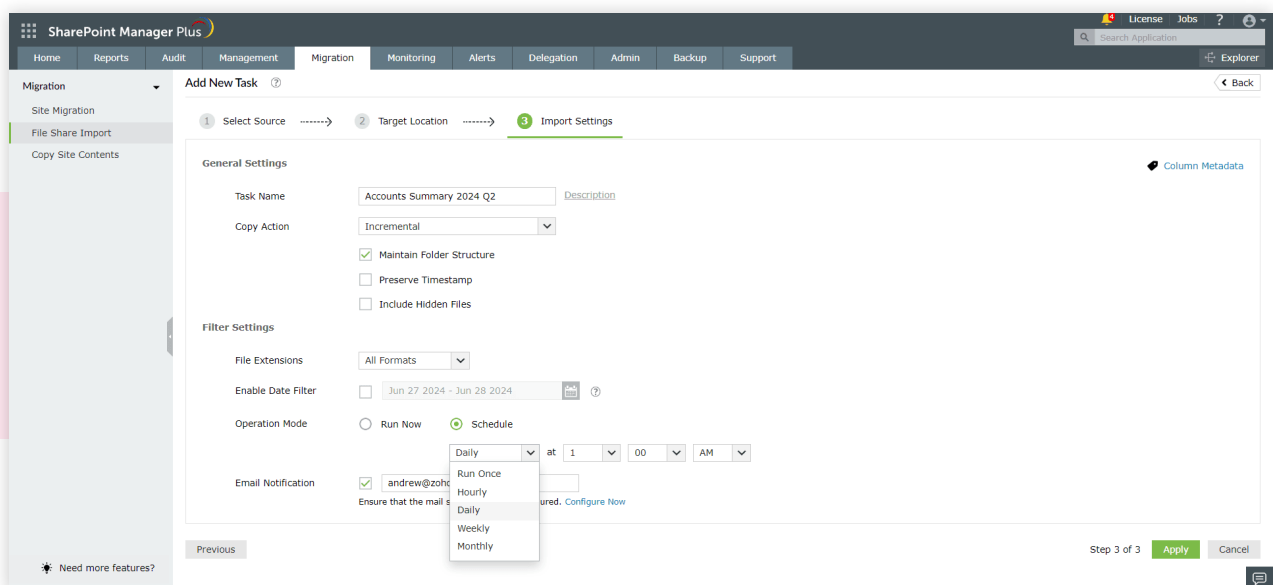
CHALLENGE 2

Lack of automation

Copying or importing resources manually to another environment, especially when you have large volumes of data, can take a lot of time. Also, doing this during business hours can disrupt your workflow. SPMT lacks automation features and requires you to use either PowerShell scripts or the Task Scheduler, which requires a reasonable amount of technical knowledge.

How SharePoint Manager Plus helps

With SharePoint Manager Plus, you can easily schedule tasks to run at a specific time or in a periodic manner to import files from your on-premises system to SharePoint Online or between different SharePoint sites. By doing this, you can focus on other important tasks at hand and let the scheduler do its job.



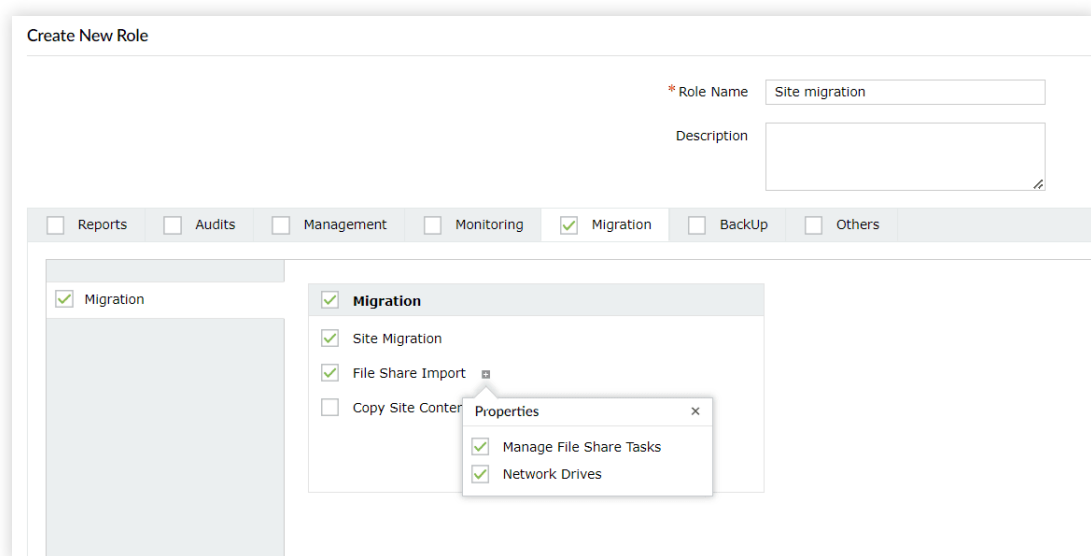
CHALLENGE 3

Requirement of elevated privileges

An administrator requires certain roles to migrate site data with SPMT. For organization level migration, the admin must be the Global or SharePoint Administrator. For site-level migration, the admin must be the SharePoint Administrator.

How SharePoint Manager Plus helps

With SharePoint Manager Plus, you can granularly delegate migration roles to non-admin users (technicians) as well. This will enable the technician to migrate resources to SharePoint Online or perform specific migration tasks without the need for extra permissions.



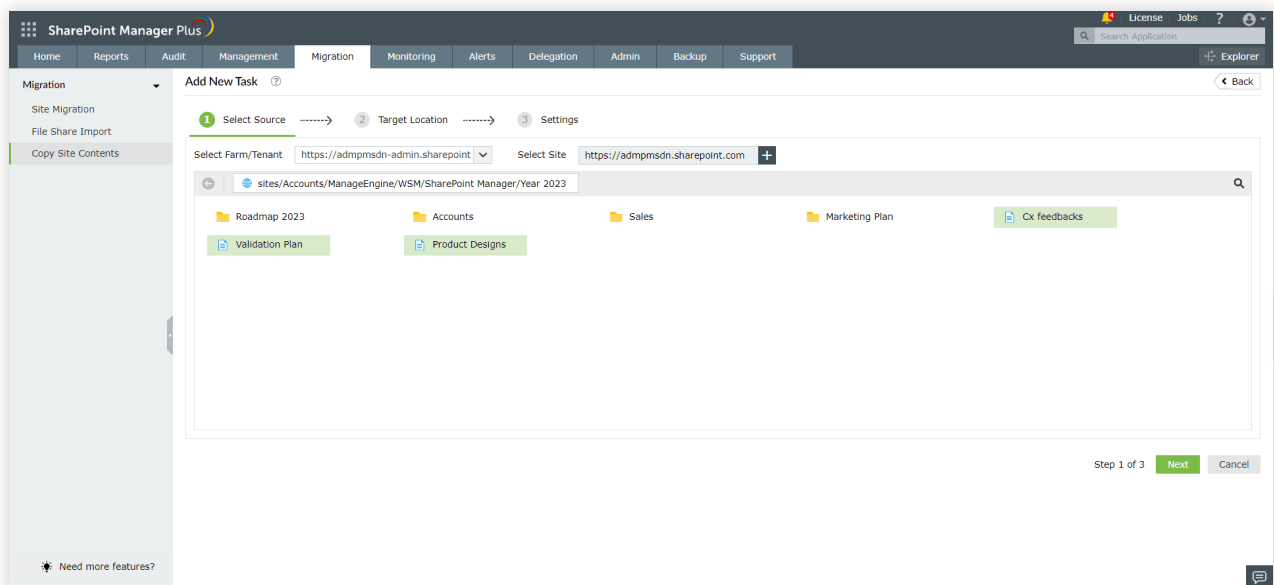
CHALLENGE 4

Limitations in granular migration

A SharePoint organization, being a collaborative platform, will be home to hundreds of files and documents. Carrying out a large-scale migration can take a while and must be done outside business hours to prevent disruptions. Because of this, you may choose to migrate only essential files rather than entire site collections or document libraries. However, SPMT limits you to only selecting up to two levels for granular migration and supports a restricted range of file types.

How SharePoint Manager Plus helps

SharePoint Manager Plus lets you dig deep into multiple levels and select the desired items that need to be copied. There aren't any restrictions on the file types as well. Simply browse through your tenant, select the files, and start migrating.



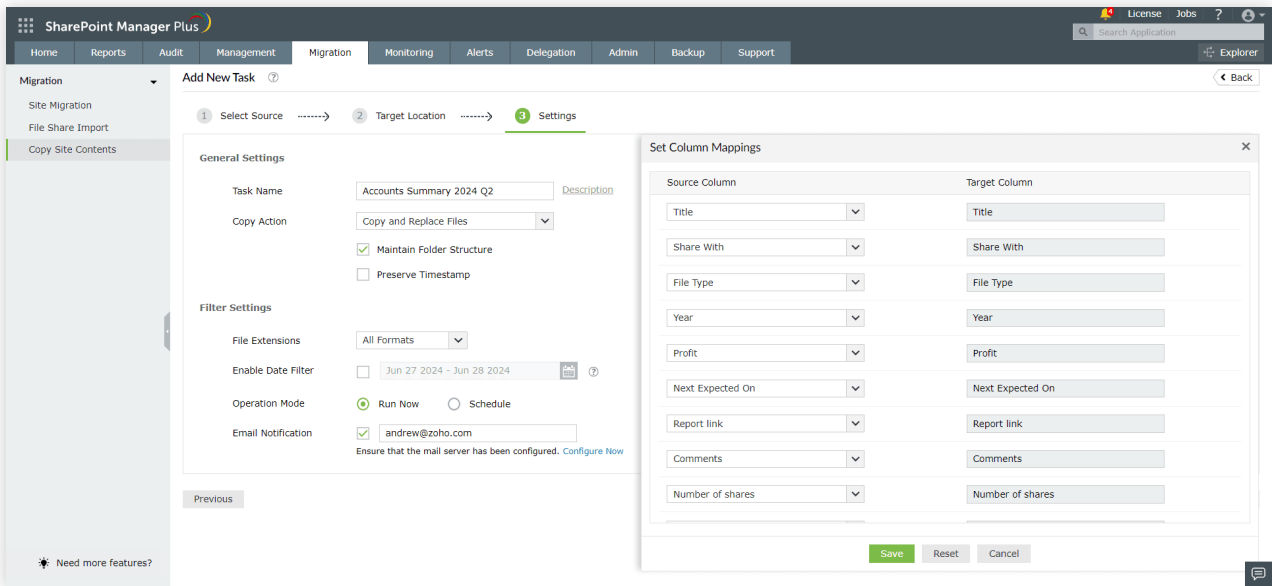
CHALLENGE 5

Difficulty in preserving metadata

When data gets migrated with inconsistent metadata, it not only creates confusion but also makes searching and filtering content harder. SPMT lacks detailed mapping controls and you'll need to add the required columns manually after migration.

How SharePoint Manager Plus helps

SharePoint Manager Plus helps you preserve the column metadata from the source when migrating to a new destination and lets you set values for custom columns. This enables users to quickly locate and manage documents based on specific attributes, significantly enhancing productivity and reducing the time spent searching for information.



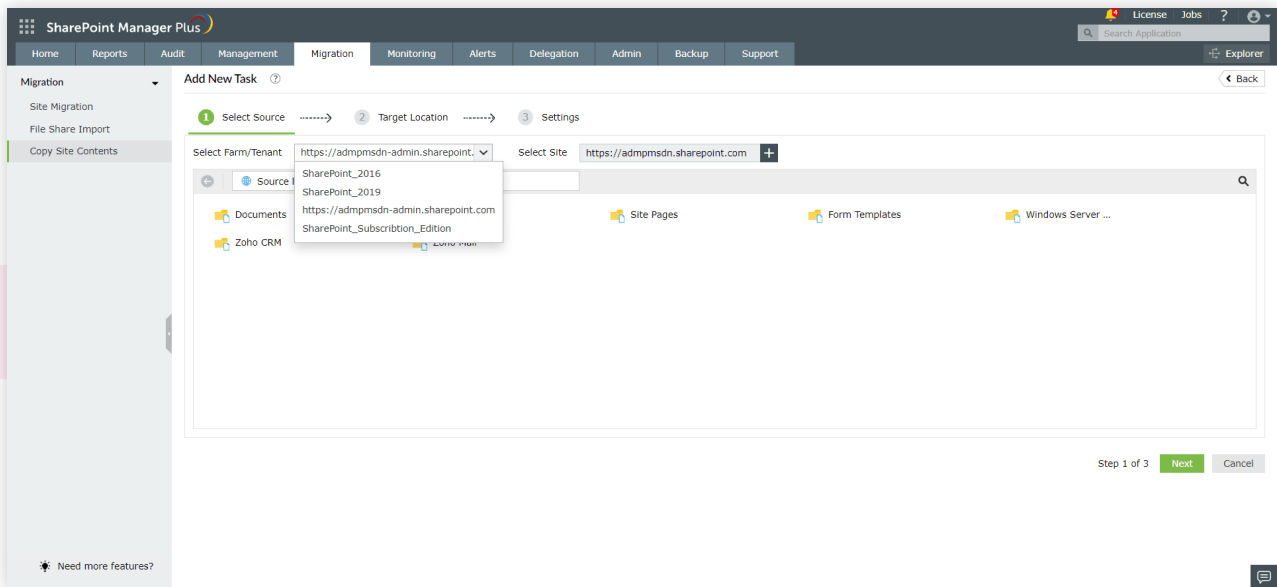
CHALLENGE 6

Migration between tenants

Another limitation of SPMT is the inability to migrate resources between tenants. This discourages cross-tenant collaboration and consolidation.

How SharePoint Manager Plus helps

SharePoint Manager Plus helps you copy site contents to another site in the same tenant or to a different tenant. This can help in reorganizing and standardizing your SharePoint resources. SharePoint Manager Plus also enables you to copy from SharePoint 2010, 2013, 2016, 2019, and Subscription Edition to SharePoint Online.



Benefits of migrating using SharePoint Manager Plus

While your migration task runs, SharePoint Manager Plus enables you to do more than just wait for it to complete.



Hybrid support:

Manage, report, and audit your SharePoint on-premises and online environments before and after migration.



Reporting:

Get statistical insight into every aspect of your organization with over 120 reports in a few clicks, or schedule them to run at periodic intervals.



Auditing:

Track every activity and user access with detailed audit logs. Configure alerts to get notified via email.



Management:

Perform bulk and granular management actions for groups and permissions with ease.



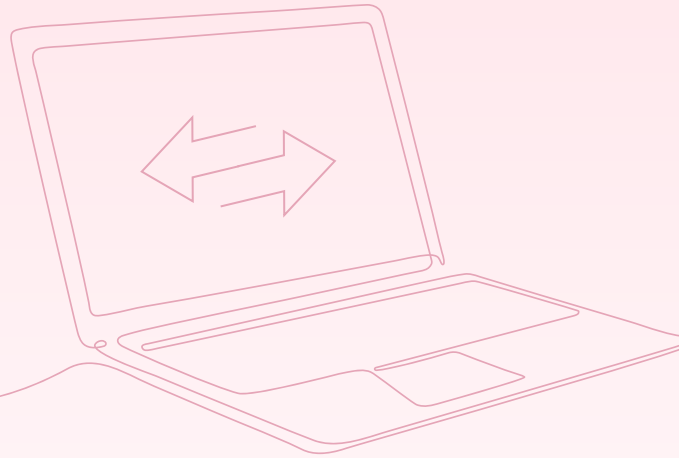
Monitoring:

Keep your tenant and site health in check with detailed reports and get alerted on critical events.



Delegation:

Ease the load on administrators by delegating roles to technicians without elevating their native privileges.



Our Products

AD360 | Log360 | ADManager Plus | ADAudit Plus | ADSelfService Plus
M365 Manager Plus | RecoveryManager Plus

ManageEngine SharePoint Manager Plus

SharePoint Manager Plus helps manage, report and audit both SharePoint on-premises and SharePoint Online environments. SharePoint Manager Plus enables you to seamlessly manage SharePoint servers, track permission changes, meet compliance requirements and more via a central console. It also provides usage analytics with insights on user behavior and security threat detection using a real-time alert system. Now you can seamlessly migrate from one version of SharePoint to another, or even to SharePoint Online. For more information about SharePoint Manager Plus, visit www.manageengine.com/sharepoint-management-reporting/.

\$ Get Quote

↓ Download