

NetFlow Analyzer

HighPerf Reporting Engine

Installation Guide

Table of Contents

1. Introduction	1
1.1 Purpose.....	1
1.2 Scope	1
2. Installation	1
2.1 Pre-requisites.....	1
2.2 Pre-Installation tasks	1
3. Installation Procedure	2
3.1 Installation - Windows	2
3.2 Installation - Linux	5
4. Testing the Installation	8

1. Introduction

1.1 Purpose:

The HighPerf Reporting Engine is an add-on to ManageEngine NetFlow Analyzer. Its sole purpose is to improve the raw data storage capacity of NetFlow Analyzer and increase the speed at which reports are generated for very high volumes of data. The HighPerf Reporting Engine enhances the storage capacity of raw data, which is very useful in long-term performance assessment, study of network traffic patterns over a longer period of time sharpening analytical capabilities of NetFlow Analyzer.

The purpose of this document is to guide the IT engineer with installation procedure for the HighPerf Reporting Engine.

1.2 Scope:

The document deals with the technical requirements for the installation of the HighPerf Reporting Engine. The specifications, system requirements, pre-installation tasks, installation steps and testing the installation are explained in this document.

2. Installation

2.1 Pre-requisites

Installing the HighPerf Reporting Engine add-on requires you to have the following system settings:

Flow Rate (flows/sec)	Processor	RAM	Hard-disk Space (for 6 months)	Server Type
0-500	2.4 GHz Dual Core Processor	4 GB	200 - 400 GB	64 bit
500-1000	2.4 GHz Dual Core Processor	4 GB	400 - 800 GB	64 bit
1000-1500	2.4 GHz Quad Core Processor	6 GB	800 GB -1.2 TB	64 bit
1500-3000	3.2 GHz Quad Core Processor	6 GB	1.2 - 2 TB	64 bit
3000-5000	3.2 GHz Quad Core Processor	8 GB	2 - 3 TB	64 bit
5000 - 10000	3.2 GHz Quad Core Processor	8 GB	3 - 6 TB	64 bit

2.2 Pre-installation tasks

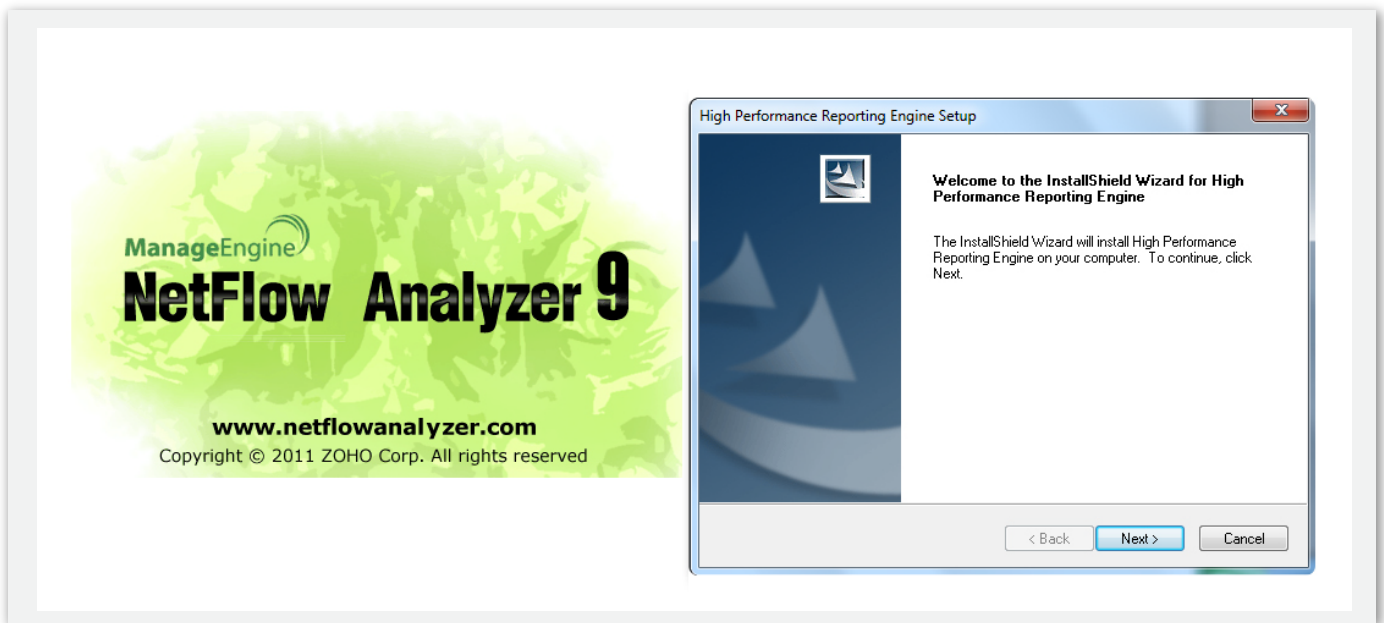
It is highly recommended to install HighPerf Reporting Engine in an external server to achieve optimum performance. However, it is also allowed to install it on the same server where ManageEngine NetFlow Analyzer is installed. you can install HighPerf Reporting Engine bundled along with the product (3.1 & 3.3) or as a separate client setup alone (3.2 & 3.4)

3. Installation Procedure

3.1 Installation - Windows

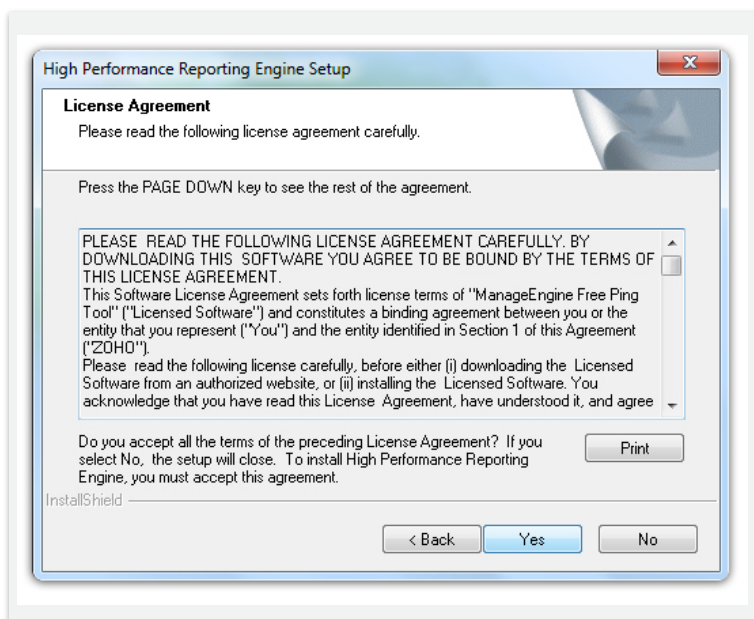
Step1

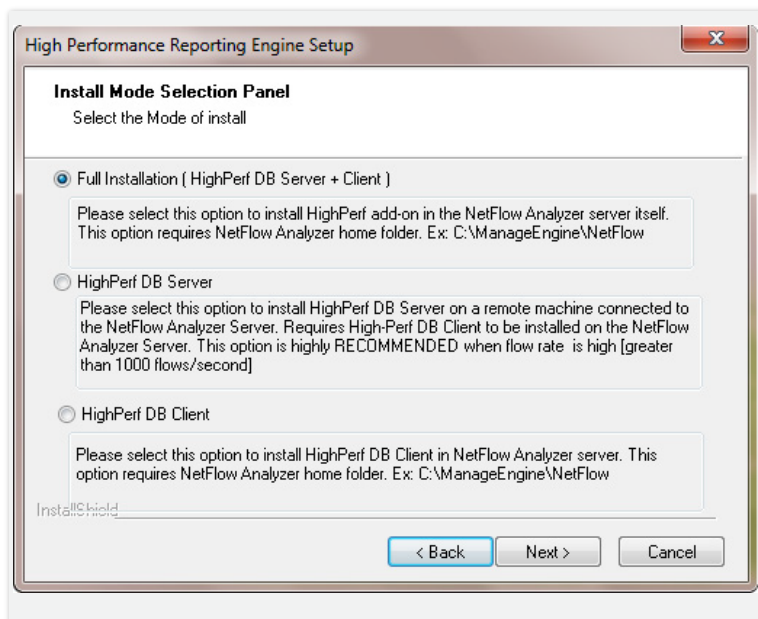
On the Welcome Screen, Click 'Next' to continue.



Step2

Read the License agreement carefully and click 'Next' to proceed to the next step.





Step 3

Installation Mode selection.

Choose the desired mode of installation.

Note: When the installation mode is Full Installation(HighPerf DB server + client) or HighPerf DB client, it must be made sure that NetFlow Analyzer is shut down.

Full installation - DB server + client

Please choose this option to install the HighPerf add-on in the NetFlow Analyzer server itself. This option requires NetFlow Analyzer home folder. Example, C:\ManageEngine\NetFlow

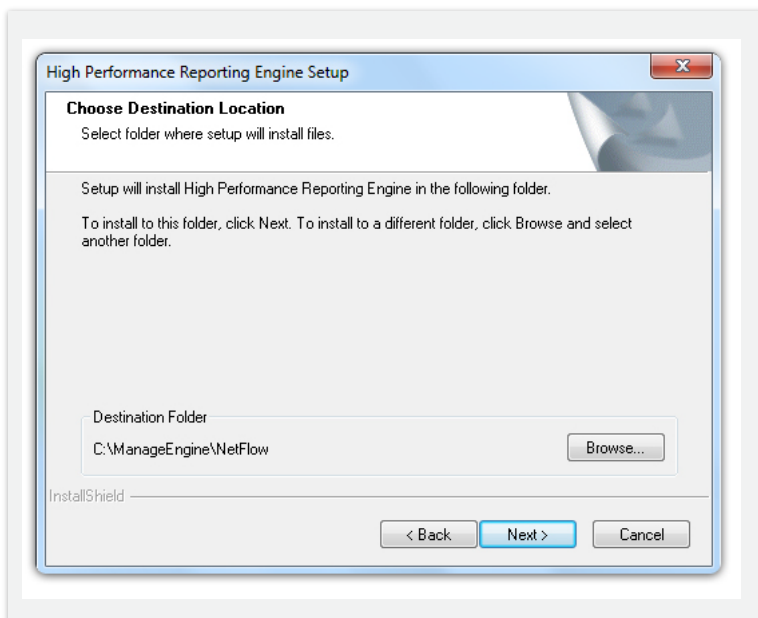
HighPerf DB server

Please select this option to install HighPerf DB Server on a remote machine connectivity to the NetFlow Analyzer Server. Requires HighPerf DB Client to be installed on the NetFlow Analyzer Server. This option is highly RECOMMENDED when flow rate is high [greater than 1000 flows/second]

HighPerf DB client

Please select this option to install High-Perf DB Client in NetFlow Analyzer server. This option requires NetFlow Analyzer home folder. Ex: C:\ManageEngine\NetFlow

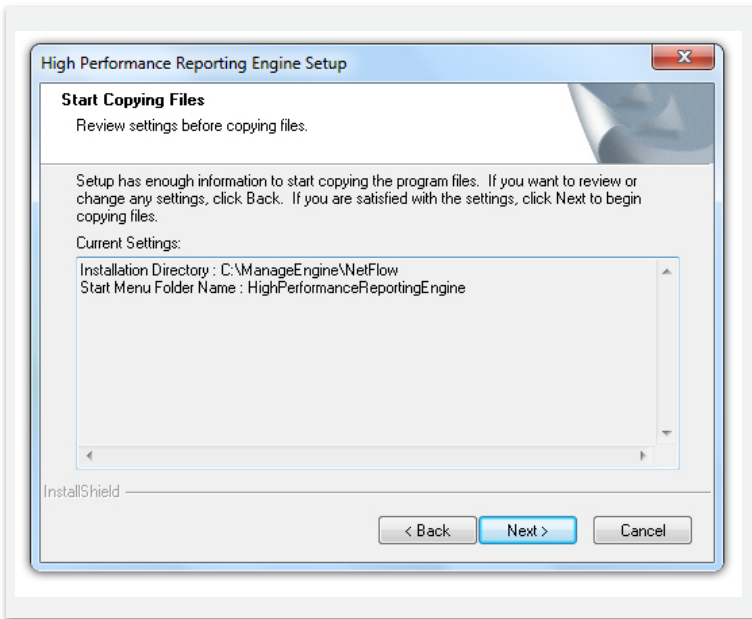
Click 'Next' to continue.



Step 4

Verify destination folder and

Click 'Next' to continue.

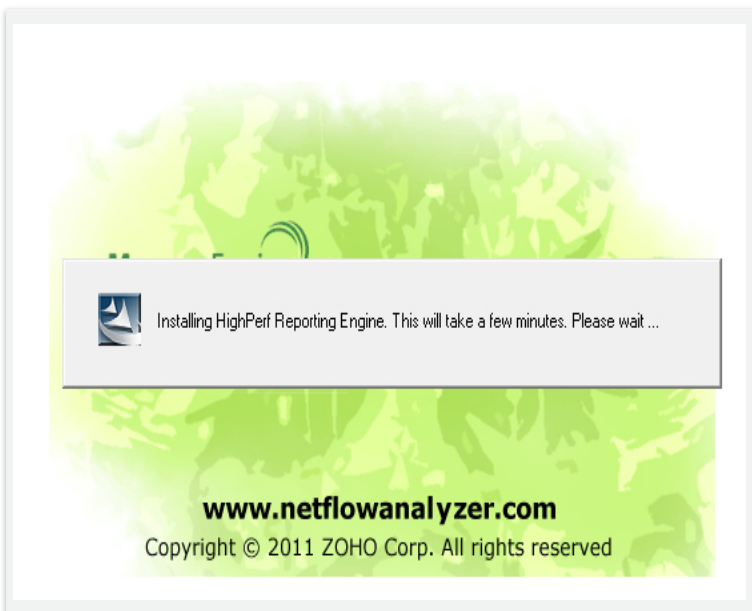
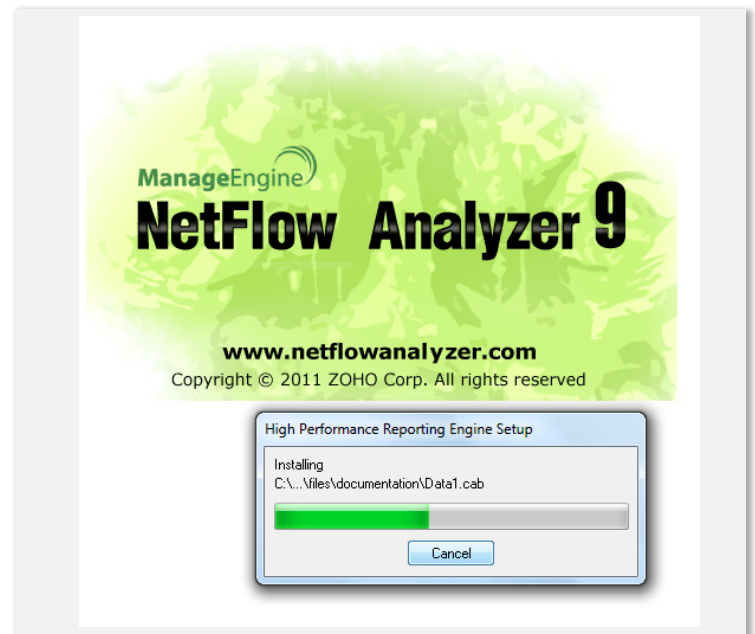


Step 5

Review the settings namely installation directory and Start menu folder name and proceed to the next step by clicking 'Next'

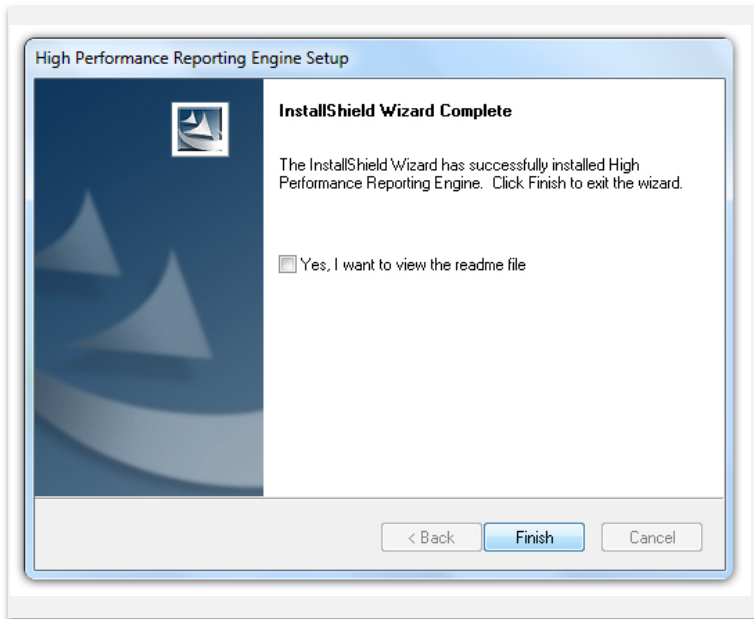
Step 6

Extraction



Step 7

Installation



Step 8

Click 'Finish' to complete the installation.

3.2 Installation - Linux

For Linux, installation should be done as 'root'

For Ubuntu and Debian operating systems, the libaio software must be installed on Linux before installing HighPerf Reporting Engine. To install libaio ,use the following rpm command:

```
rpm -ivh libaio*.rpm
```

Alternatively you can use this apt-get install libaio

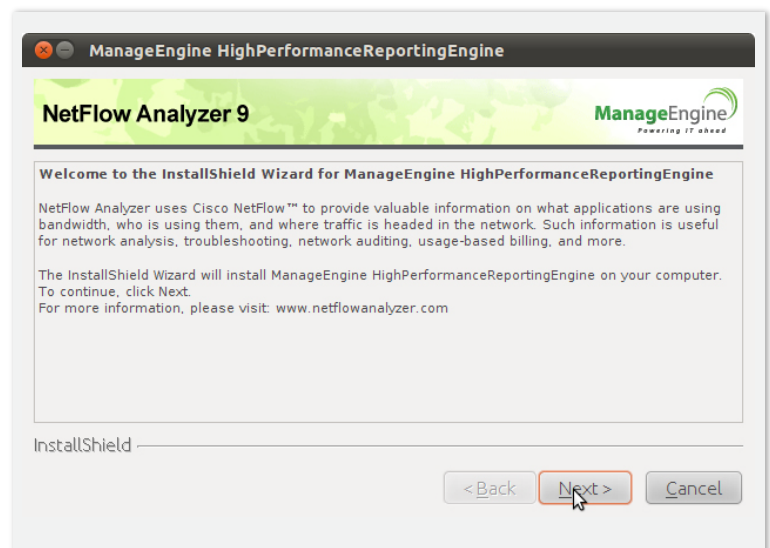
Also, if the yum system update tool is available on your Linux, use this command:

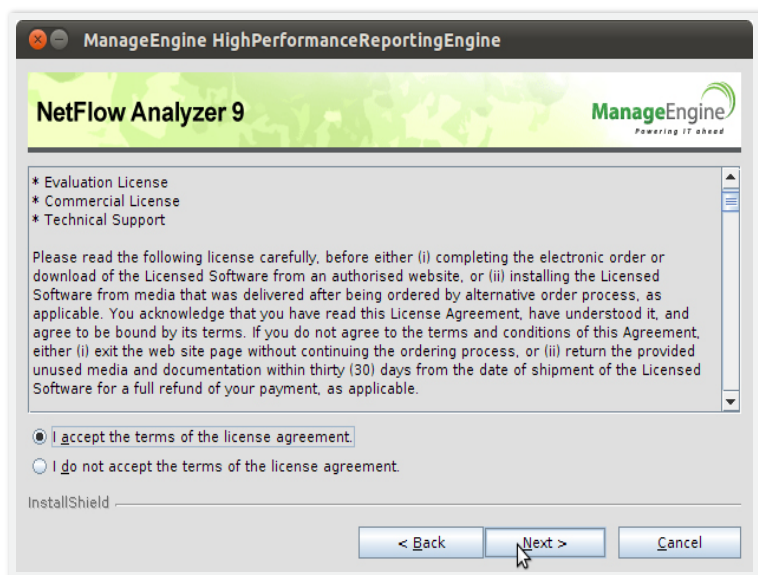
```
yum install libaio
```

Step 1

Welcome Screen.

Click 'Next' to continue.





Step 2

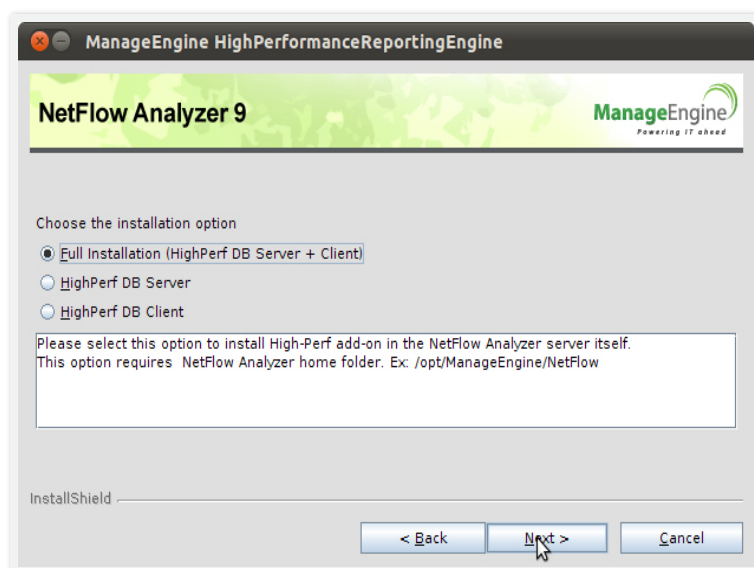
Read the License agreement carefully and click 'Next' to proceed to the next step.

Step 3

Installation Mode selection.

Choose the desired mode of installation

Note: When the installation mode is Full Installation(HighPerf DB server + client) or HighPerf DB client, it must be made sure that NetFlow Analyzer is shut down.



Full installation - DB server + client

Please choose this option to install the HighPerf add-on in the NetFlow Analyzer server itself. This option requires NetFlow Analyzer home folder.

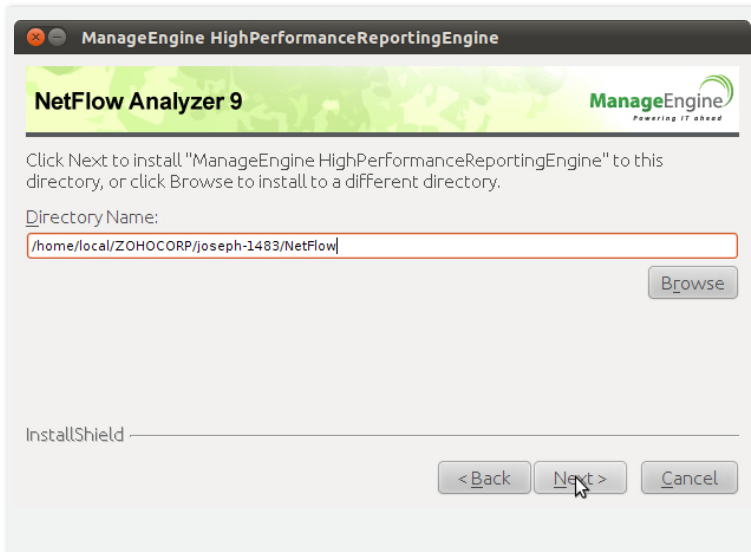
HighPerf DB server

Please select this option to install HighPerf DB Server on a remote machine connectivity to the NetFlow Analyzer Server. Requires HighPerf DB Client to be installed on the NetFlow Analyzer Server. This option is highly RECOMMENDED when flow rate is high [greater than 1000 flows/second]

HighPerf DB client

Please select this option to install High-Perf DB Client in NetFlow Analyzer server. This option requires NetFlow Analyzer home folder.

Click 'Next' to continue.

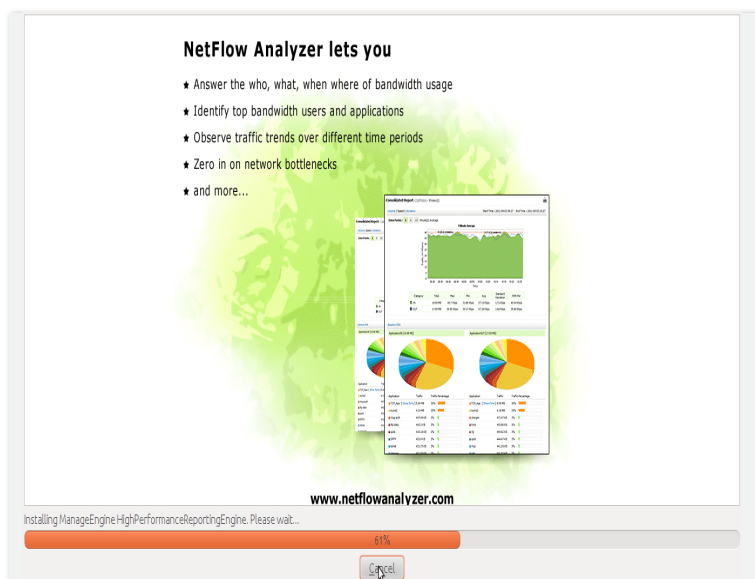
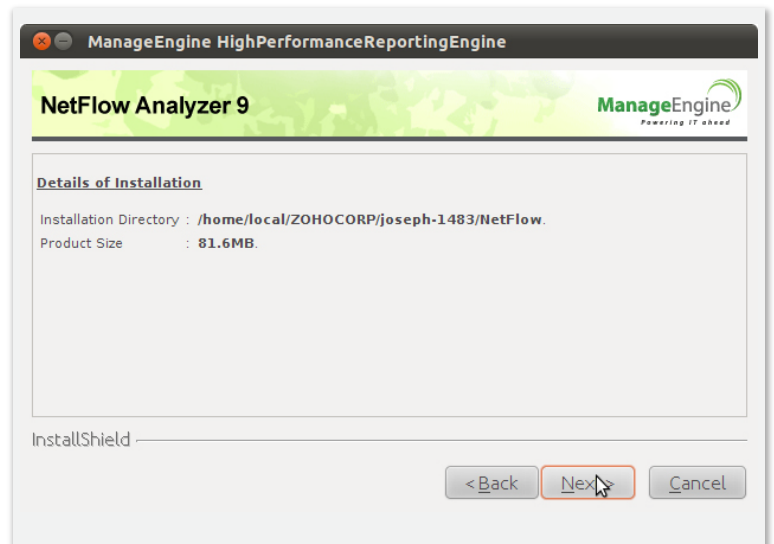


Step 4

Verify Installation Location and
Click 'Next' to continue.

Step 5

Verify Installation Directory and
Click 'Next' to continue.

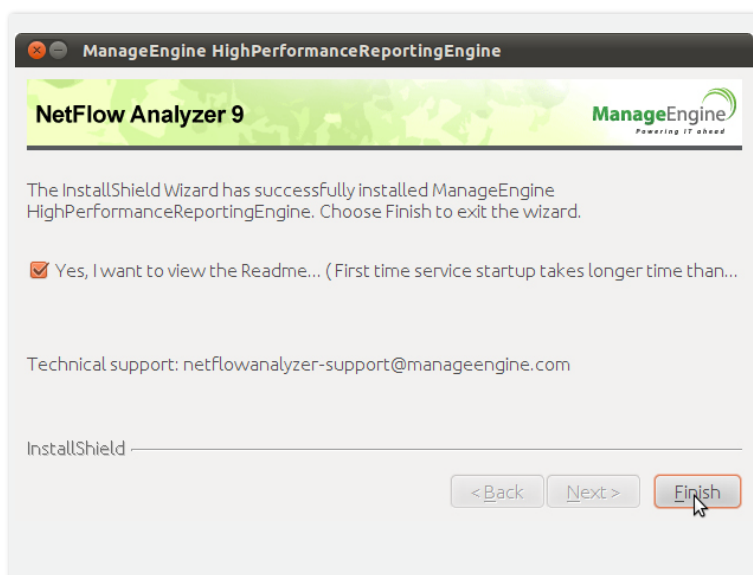


Step 6

Wait until the installation process completes

Step 7

Click 'Finish' to complete the installation.



4. Testing the Installation

The 'Test' option is available in the Admin > HighPerf Reporting Engine Settings in the GUI

Related Links

- 1) Benefits - www.manageengine.com/products/netflow/highperf-reporting-engine-benefits.pdf
- 2) FAQs - www.manageengine.com/products/netflow/highperf-reporting-engine-faqs.html
- 3) Additional resources - www.manageengine.com/products/netflow/highperf-reporting-engine-installation-resources.html